

PLEASE CHECK WWW.MOLEX.COM FOR LATEST PART INFORMATION

Part Number: [0643251175](#)
Status: **Planned for Obsolescence**
Overview: [cmc connectors](#)
Description: 2.80mm (.110"), CMC Wire Seal Receptacle, Green

Documents:

[Drawing \(PDF\)](#) [RoHS Certificate of Compliance \(PDF\)](#)

General

Product Family	Crimp Terminals
Series	64325
Comments	For additional details please refer to Application Tooling Spec of Relevant CMC Connector.
Crimp Quality Equipment	Yes
Overview	cmc connectors
Product Name	CMC

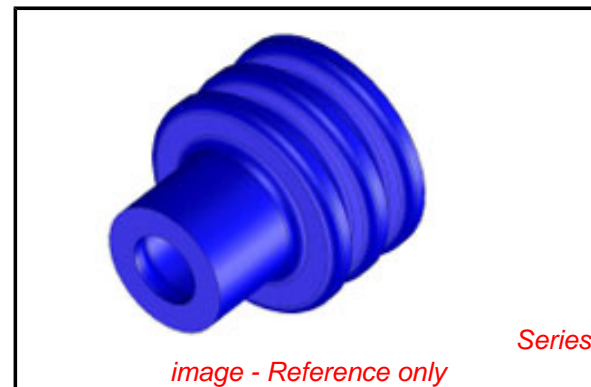
Physical

Gender	Receptacle
Material - Metal	N/A
Material - Plating Mating	n/a
Packaging Type	Carton
Plating min: Mating (µin)	N/A
Plating min: Mating (µm)	N/A
Termination Interface: Style	N/A
Wire Insulation Diameter	2.1mm - 2.8mm
Wire Size AWG	N/A
Wire Size mm ²	1.0 - 2.0

Material Info

Reference - Drawing Numbers

Sales Drawing	SD-64325-003
---------------	--------------



EU RoHS

ELV and RoHS Compliant
REACH SVHC
 Not Reviewed
Halogen-Free Status
 Not Reviewed

China RoHS



Need more information on product environmental compliance?

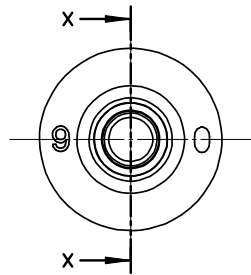
Email productcompliance@molex.com
 For a multiple part number RoHS Certificate of Compliance, [click here](#)

Please visit the [Contact Us](#) section for any non-product compliance questions.

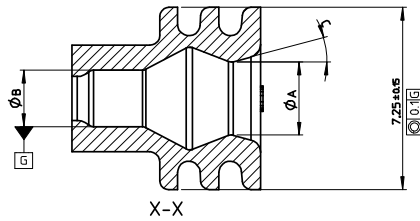
Search Parts in this Series
[64325Series](#)

Mates With

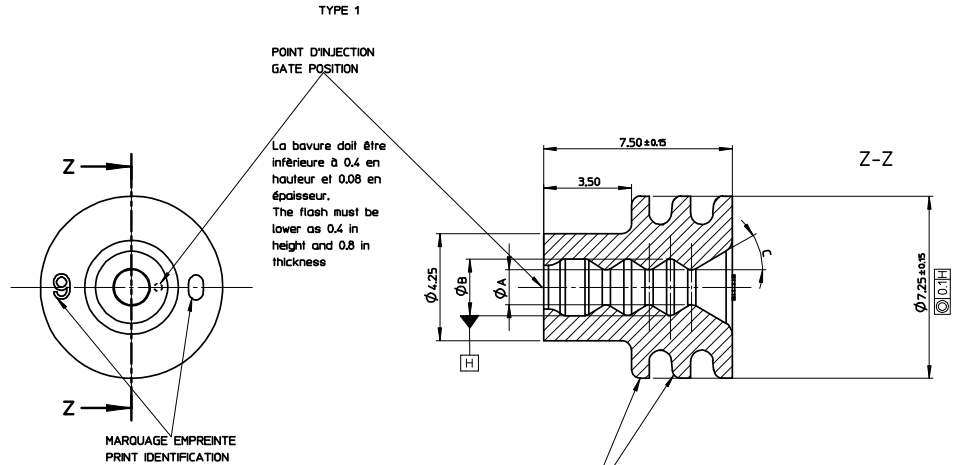
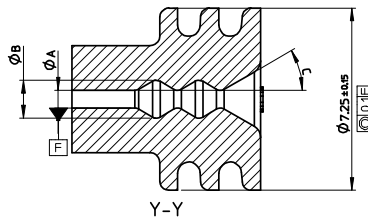
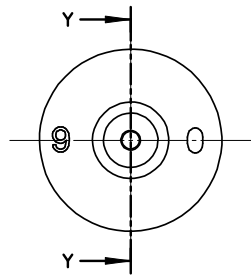
Use With
[64324](#) CMC CP Terminals



TYPE 2



TYPE 3



POINT D'INJECTION
GATE POSITION

La bavure doit être inférieure à 0.4 en hauteur et 0.08 en épaisseur.
The flash must be lower as 0.4 in height and 0.8 in thickness

MARQUAGE EMPREINTE
PRINT IDENTIFICATION

N°90 représenté : sens de lecture en liaison avec la position du point d'injection
chiffre : hauteur 1 +0.2/0 en relief , épaisseur 0.1 +0.1/0

N°90 represented : reading direction in liaison with the gate position
Number : height 1 +0.2/0 embossed, thickness 0.1 +0.1/0

Les lèvres du joint doivent être exemptes de bavures, coupures, marque matière, déformations ...
No flash, no cut, no less material, no deformation on seal lips

SPECIFICATION MATIERE : Silicone lubrifié 4%

- * température mini d'utilisation : -40°C
- * dureté à l'état initial : 50 ± 5 Shore A
- après vieillissement à la chaleur : (70 heures à 232°C) : 55 ± 10 Shore A
- après vieillissement aux solvants : (ASTM#3oil) (70 heures à 149°C) : 25 points d'écart maxi

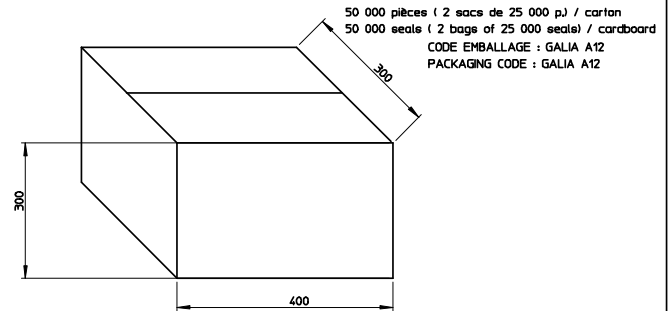
- augmentation du volume 50% maxi
- * compression set (ASTM D 395/B) 22 heures à 177°C : 50% maxi
- * résistance au déchirement (ASTM D 624/B) 14 KN/M

MATERIAL SPECIFICATION : Silicon lubricated 4%

- * mini temperature for use : -40°C
- * initial state hardness : 50 ± 5 Shore A
- after ageing with heat : (70 hours at 232°C) : 55 ± 10 Shore A
- after ageing with solvents : (ASTM#3oil) (70 hours at 149°C) : 25 points in difference max

- volume increase 50% max
- * compression set (ASTM D 395/B) 22 hours to 177°C : 50% max
- * tearing resistance (ASTM D 624/B) 14KN/M

CONDITIONNEMENT LIVRAISON EN VRAC / LOOSE PACKAGING



REFERENCE MOLEX	COULEUR	TYPE	Ø CABLE ADMIS	POIDS CALCULÉ (g)	Ø A	Ø B	C
0643251196	BLEU / BLUE	2	3.40/4.00	0.132	3.35/3.65	2.85/3.15	20
0643251188	GRIS/GREY	2	2.65/3.45	0.151	2.75/3.05	2.25/2.55	15
0643251175	VERT/GREEN	1	2.10/2.80	0.168	1.40/1.70	2.25/2.55	30
0643251162	ROUGE/RED	3	1.40/2.15	0.189	0.70/1.00	1.50/1.80	30

FIRST RELEASE EC NO: GZ008-0463 DRAWN BY: JAUOU CHKD BY: BOUGHAN APPROVAL: LEGER	2008/05/16 2008/05/16 2008/05/16	DESCRIPTION	GENERAL TOLERANCES (UNLESS SPECIFIED)		DIMENSION STYLE		SCALE	DESIGN UNITS	FIRST ANGLE PROJECTION
			mm	INCH	MM ONLY	10:1	METRIC		
4 PLACES ± --- ± ---			DRAWN BY		DATE		TITLE		
3 PLACES ± --- ± ---			VQUERIN		2007/07/12		SINGLE WIRE SEAL FOR CP 2.8 TERMINAL		
2 PLACES ± --- ± ---			CHECKED BY		DATE		Molex		
1 PLACE ± 0.1 ± ---			FPAROLARI		2007/07/12		MOLEX INCORPORATED		
ANGULAR ± 2 °			APPROVED BY		DATE		DOCUMENT NO.		
DRAFT WHERE APPLICABLE MUST REMAIN WITHIN DIMENSIONS			LSTICKEI		2007/07/13		SD-64325-003		
SEE CHART			MATERIAL NO.		SHEET NO.		1 OF 1		
THIS DRAWING CONTAINS INFORMATION THAT IS PROPRIETARY TO MOLEX INCORPORATED AND SHOULD NOT BE USED WITHOUT WRITTEN PERMISSION			A		1				