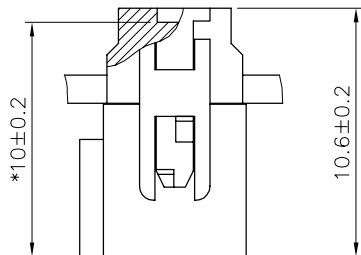
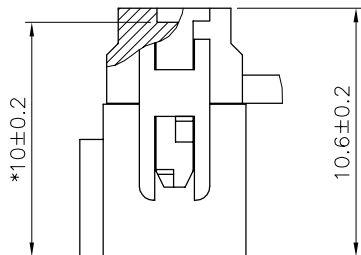


PRODUCT NUMBER	SIZE	DIM "A"	DIM "B"	DIM "C"	DIM "S"	SLOT STYLE	TOOLED UP BLIND COVER
79434-X04	2x 2	9.54	2.54	9.46	5.71	NO SLOT	NO
79434-X06	2x 3	12.08	5.08	12.00	8.25	RIGHT IF NO KEY	NO
79434-X08	2x 4	14.62	7.62	14.54	10.79	RIGHT IF NO KEY	NO
79434-X10	2x 5	17.16	10.16	17.08	13.33	RIGHT SLOT	YES
79434-X14	2x 7	22.24	15.24	22.16	18.41	RIGHT SLOT	YES
79434-X16	2x 8	24.78	17.78	24.70	20.95	2 SLOTS	YES
79434-X18	2x 9	27.32	20.32	27.24	23.49	2 SLOTS	YES
79434-X20	2x 10	29.86	22.86	29.78	26.03	2 SLOTS	YES
79434-X24	2x 12	34.94	27.94	34.85	31.11	2 SLOTS	YES
79434-X26	2x 13	37.48	30.48	37.40	33.65	2 SLOTS	YES
79434-X30	2x 15	42.56	35.56	42.48	38.73	2 SLOTS	YES
79434-X34	2x 17	47.64	40.64	47.56	43.81	2 SLOTS	YES
79434-X40	2x 20	55.26	48.26	55.18	51.43	2 SLOTS	YES
79434-X44	2x 22	60.34	53.34	60.26	56.51	2 SLOTS	YES
79434-X50	2x 25	67.96	60.96	67.88	64.13	2 SLOTS	YES
79434-X60	2x 30	80.66	73.66	80.58	76.83	2 SLOTS	YES
79434-X64	2x 32	85.74	78.74	85.66	81.91	2 SLOTS	YES

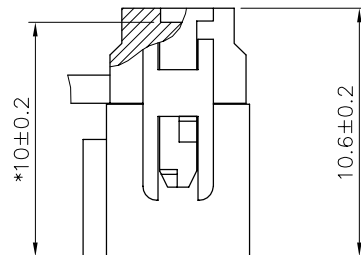
79434-XYL SEE NOTE 4 SHEET 1



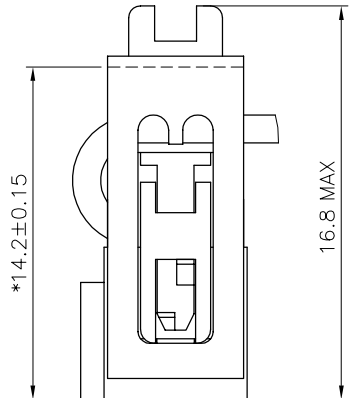
WITHOUT STRAIN RELIEF
DUAL ENTRY COVER



WITHOUT STRAIN RELIEF
BLIND COVER LEFT ASSY



WITHOUT STRAIN RELIEF
BLIND COVER RIGTH ASSY



WITH STANDARD STRAIN RELIEF

AFTER TERMINATION SIDE VIEW OF ASSEMBLY (* LATCHING DIM ON HEADER)

79434-9YY	●			●		●		904 906 908
79434-8YY	●			●			●	804 806 808
79434-7YY	●		●			●		704 706 708
79434-6YY	●		●				●	604 606 608
79434-5YY		●	●			●		504 506 508
79434-4YY		●	●				●	404 406 408
79434-3YY	●			●	●			
79434-2YY	●		●		●			204
79434-1YY		●		●	●			
79434-0YY		●	●		●			004
PRODUCT NUMBER	WITH CENTRAL KEY	WITHOUT CENTRAL KEY	STANDARD STRAIN RELIEF	WITHOUT STRAIN RELIEF	DUAL ENTRY COVER	LEFT ASSY BLIND COVER	RIGHT ASSY BLIND COVER	DASHES NOT AVAILABLE

mat'l. code				tolerances unless otherwise specified				CUSTOMER COPY		FCI ELECTRONICS www.fciconnect.com	
ltr	ecp no	dr	date	linear	angles	mm	scale	projection	title	product family	code
D	F10583	PNZ	91.07.30								
E	F60652	PNZ	96.09.18								
F	F70440	PNZ	97.06.09								
G	F03019	DLE	03.01.23	dr	P.NIZZI	96.09.18					
				engr	JM PHAMVAN	96.09.18					
				chr	P. NIZZI	96.09.18					
				appd	JMP	96.09.18					
sheet index	revision sheet										
A2										213	2 of 2

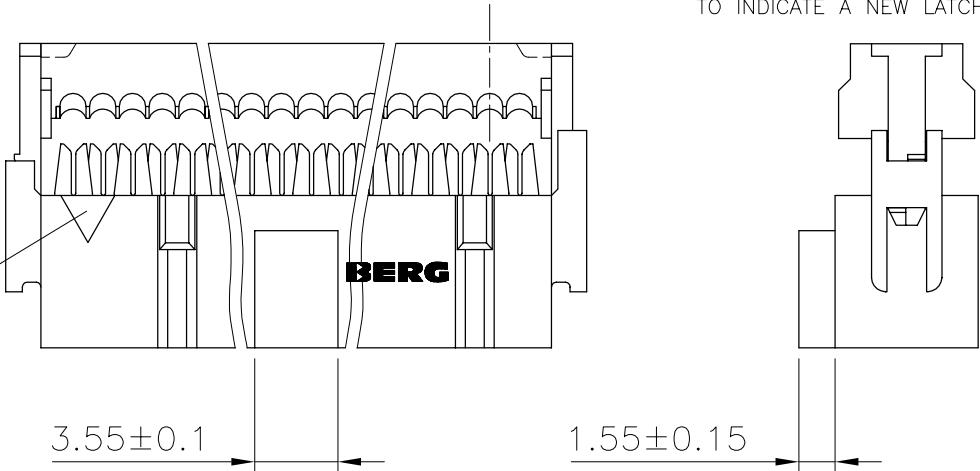
PRODUCT NUMBER	SIZE	DIM "A"	DIM "B"	DIM "C"	DIM "S"	SLOT STYLE	TOOLED UP BLIND COVER
79434-X34K	2x17	47.64	40.64	47.56	43.81	2 SLOTS	YES
79434-X40K	2x20	55.26	48.26	55.18	51.43	2 SLOTS	YES

79434-XXXKL SEE NOTE 5 & 6

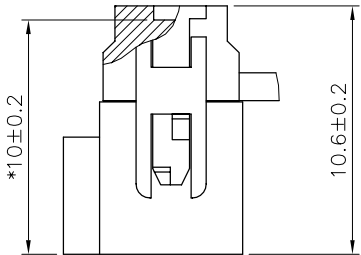
NOTES:

- 5 THE DASH "K" AT THE END OF THE P/N TO INDICATE A SPECIAL KEY PRODUCT.
- 6 THE DASH "L" AT THE END OF THE P/N TO INDICATE A NEW LATCH DESIGN.

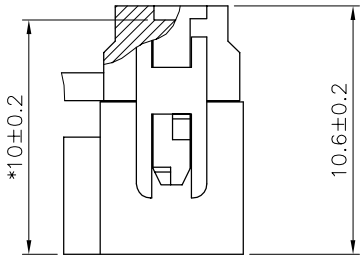
TRIANGLE
INDICATES POSITION 1



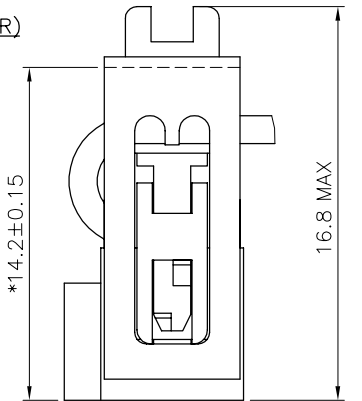
AFTER TERMINATION SIDE VIEW OF ASSEMBLY (* LATCHING DIM ON HEADER)



WITHOUT STRAIN RELIEF
BLIND COVER LEFT ASSY



WITHOUT STRAIN RELIEF
BLIND COVER RIGTH ASSY



WITH STANDARD STRAIN RELIEF

SPECIAL KEY CUSTOMER

79434-9YY	●			●	●	
79434-8YY	●			●		●
PRODUCT NUMBER	WITH CENTRAL KEY	WITHOUT CENTRAL KEY	STANDARD STRAIN RELIEF	WITHOUT STRAIN RELIEF	LEFT ASSY BLIND COVER	RIGHT ASSY BLIND COVER

mat'l. code				tolerances unless otherwise specified				CUSTOMER COPY		F C I ELECTRONICS	
l	tr	ec	n	dr	date	linear		projection		title	www.fciconnect.com
D	F10583	PNZ			91.07.30					EURO QUICKIE	
E	F60652	PNZ			96.09.18					1 PIECE	
F	F70440	PNZ			97.06.09	angles					
G	F03019	DLE		03.01.23	dr	P.NIZZI	96.09.18	mm		product family	QKIE FEM.
					engr	JM PHAMVAN	96.09.18			size	213
					chr	P. NIZZI	96.09.18	scale		dwg no	213
					appd	JMP	96.09.18	N/A		79434	sheet
sheet	index	revision	sheet								3 of -