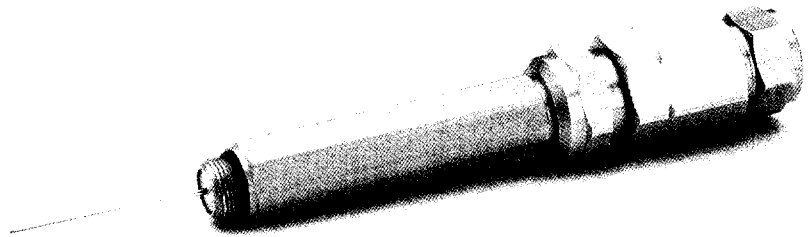
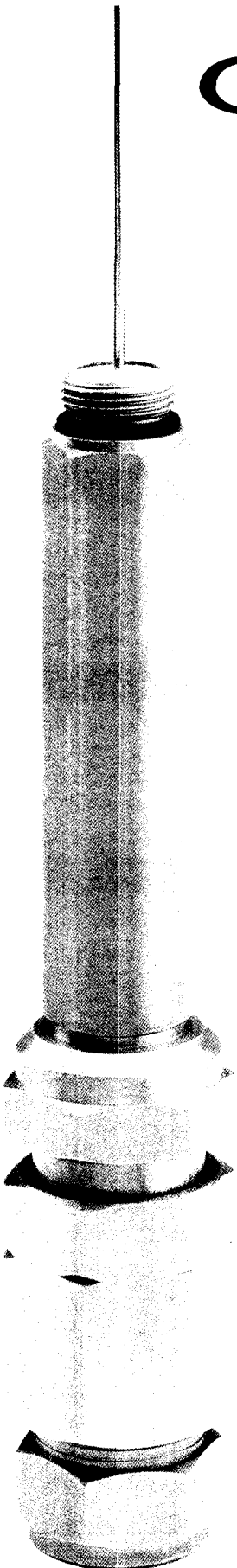


GRS **series**

THREE PIECE EXTENSION CONNECTOR



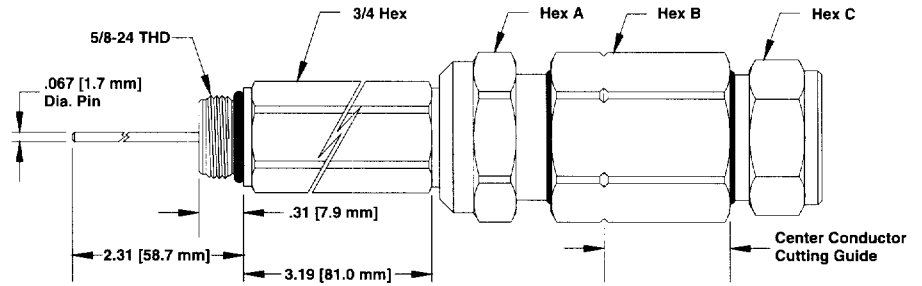
Chassis mounting connector for 5/8-24 equipment entry. This GRS Series connector incorporates a **one piece continuous pin** on extensions ranging from 3 inches up to 18 inches resulting in excellent performance and reliability.

- This GRS Series connector is a three piece auto seizing design featuring independent seizing of the cable's center and outer conductors.
- Independent seizing of the center conductor permits installers to physically verify that the center conductor has been seized prior to tightening the back nut.
- Locating the integral mandrel of the connector in the main nut gives full view of the center conductor entering the seizing mechanism and requires minimal pull back for ease of installation.
- Reusable
- Center conductor trim guide.
- Part numbers are permanently marked on the connectors for easy identification.

Extension Connectors

Note: The part numbers listed are for the 3" extension length. Extensions are also available in 6,9,12, and 18" lengths. To order the 6,9,12 or 18" extension lengths follow the example shown below:

Example: GRS-500-EXT-12-DU-03-T



CommScope P-III Times Fiber T-10

	PART NUMBER	CENTER CONDUCTOR	OUTER CONDUCTOR	BODY HEX (A)	MAIN NUT HEX (B)	BACK NUT HEX (C)
.412	GRS-412-EXT-DU-01-T	.092	.412	15/16	1	15/16
.500	GRS-500-EXT-DU-03-T	.109	.500	1-1/8	1-1/8	1
.625	GRS-625-EXT-DU-02-T	.137	.625	1-1/4	1-1/4	1-1/8
.750	GRS-750-EXT-DU-01-T	.167	.750	1-3/8	1-3/8	1-1/4
.875	GRS-875-EXT-DU-02-T	.194	.875	1-3/8	1-3/8	1-3/8
1.000	GRS-1000-EXT-DU-01-T	.220	1.000	1-3/8	1-5/8 ϕ , 1-1/2 flats	1-1/2

CommScope QR

.320 (7C)	GRS-320-EXT-QR-T	.071	.320	15/16	1	1
.540	GRS-540-EXT-QR-T	.124	.540	1-1/4	1-1/4	1-1/8
.715	GRS-715-EXT-QR-T	.166	.715	1-5/16	1-5/16	1-5/16
.860	GRS-860-EXT-QR-T	.203	.860	1-3/8	1-5/8 ϕ , 1-1/2 flats	1-1/2
1.125	GRS-1125-EXT-QR-T	.263	1.125	Requires 2 Hook Type Spanner Wrenches (P/N SW-2)		

Times Fiber TX-10

.480	GRS-480-EXT-TX-T	.109	.480	1-1/8	1-1/8	1
.565	GRS-565-EXT-TX-T	.129	.565	1-1/4	1-1/4	1-1/8
.700	GRS-700-EXT-TX-T	.165	.700	1-5/16	1-5/16	1-5/16
.840	GRS-840-EXT-TX-T	.194	.840	1-3/8	1-1/2	1-1/2
1.160	GRS-1160-EXT-TX-T	.269	1.160	Requires 2 Hook Type Spanner Wrenches (P/N SW-2)		

Trilogy MC2

.440	GRS-440-EXT-MC2-T	.105	.450	1-1/8	1-1/8	1
.500	GRS-500-EXT-MC2-T	.123	.510	1-1/8	1-1/8	1
.650	GRS-650-EXT-MC2-T	.156	.640	1-5/16	1-5/16	1-5/16
.750	GRS-750-EXT-MC2-T	.185	.760	1-3/8	1-3/8	1-1/4
1.000	GRS-1000-EXT-MC2-T	.248	1.015	1-1/2	1-3/4 ϕ , 1-5/8 flats	1-1/2

Early Generations

See Cable Group Listings in Reference Section of this Catalog

.412 Group A	GRS-412-EXT-A-01-T	.080	.412	13/16	1	15/16
.412 Group CX	GRS-412-EXT-CX-T	.080	.482*	15/16	1-1/8	1
.500 Group C	GRS-500-EXT-A-01-T	.100	.500	15/16	1-1/8	1
.500 Group D	GRS-500-EXT-DU-01-T	.109	.500	1-1/8	1-1/8	1
.500 Group E	GRS-500-EXT-DU-02-T	.109	.500	1-1/8	1-1/8	1
.500 Group F	GRS-13.0-EXT-DU-01-T	.119	.509	1-1/8	1-1/8	1
.500 Group CX	GRS-500-EXT-CX-T	.110	.571*	1-1/8	1-1/4	1-1/8
.625 Group CX	GRS-625-EXT-CX-T	.137	.693*	1-1/4	1-3/8	1-1/4
.750 Group G	GRS-750-EXT-A-01-T	.148	.750	1-1/8	1-3/8	1-1/4
.750 Group H	GRS-750-EXT-DU-03-T	.167	.750	1-3/8	1-3/8	1-1/4
.750 Group J	GRS-750-EXT-FD-04-T	.176	.750	1-3/8	1-3/8	1-1/4
.750 Group CX	GRS-750-EXT-CX-T	.169	.816*	1-3/8	1-1/2 ϕ , 1-7/16 flats	1-1/4
.875 Group CX	GRS-875-EXT-CX-T	.194	.947*	1-3/8	1-5/8 ϕ , 1-1/2 flats	1-1/2
1.000 Group O	GRS-1000-EXT-A-01-T	.193	1.000	1-3/8	1-5/8 ϕ , 1-1/2 flats	1-1/2
1.000 Group N	GRS-1000-EXT-FD-01-T	.236	1.000	1-1/2	1-3/4 ϕ , 1-5/8 flats	1-1/2

*Indicates diameter over outer jacket