



**TERMINAL BLOCKS**

- 7.5mm Pitch
- Flame Retardant Material
- 2.5mm<sup>2</sup> wire acceptance
- UL/ CSA approved
- Interlocking
- Screw Terminal

**7.5mm PITCH 90° MOUNT**

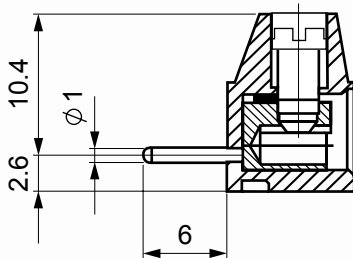


**SPECIFICATION**

**Rating:** 17.5A/750V  
**Dielectric Strength:** ≥3KV/60sec  
**Insulation Resistance:** ≥5MΩ  
**Working temperature:** -20°C to 125°C  
**Short Period:** 160°  
**Moulding:** UL94V-0 flame retardant Lexan

**Pin/terminal:** 5μ tinned, nickel plated brass  
**Wire protector:** Nickel plated brass  
**Screw/torque:** M3 steel, 6μ zinc colour passivated and tropicalised/0.5Nm  
**Recommended PCB hole size:** ø1.1mm

**OUTLINE DRAWING**



**ORDERING INFORMATION**

DBC	TB	87	/2
Dubilier Connectors	Series Terminal Block	Style	N° of Ways 2 = 2 ways 3 = 3 ways

\* Other Number of ways are available up to 12  
Please consult office for further details

**TERMINAL BLOCKS**

- 7.5mm Pitch
- Screw Terminal
- 2 - 12 pole interlocking
- 2.5mm<sup>2</sup> wire acceptance
- UL/CE approved

**7.5MM PITCH SCREW TERMINAL**



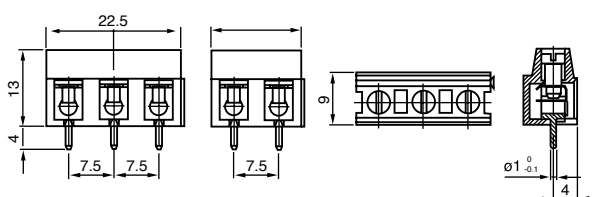
**SPECIFICATION**

**Electrical Characteristics**

**Rating Current:** 17.5A/750V  
**Dielectric strength** ≥ 3kV/60sec  
**Insulation resistance** ≥ 5MΩ  
**Operating Temperature:** -20°C to +125°C  
**Short period:** 160°C  
**Moulding:** UL94-V0 flame retardant Lexan

**Pin/terminal:** 5μ tinned, nickel plated brass  
**Wire protector:** Nickel plated brass  
**Screw/torque:** M3 steel. 6μ zinc colour passivated and tropicalised/0.5Nm  
**Recommended PCB hole size:** ø1.1mm

**OUTLINE DRAWING**



**ORDERING INFORMATION**

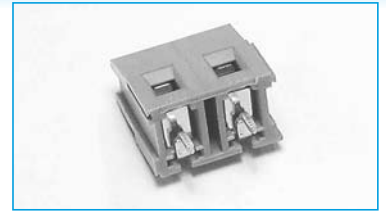
DBC	TB	24	/2
Dubilier Connectors	Series Terminal Blocks	Style	No of Ways 2 = 2ways 3 = 3ways

\* other number of ways are available  
Please consult the office for further details

**TERMINAL BLOCKS**

- 7.5mm Pitch
- Rising Clamp Terminal
- 2 - 12 pole interlocking
- 2.5mm<sup>2</sup> wire acceptance
- UL/CE/VDE approved
- Colour green

**7.5MM PITCH 18 POLE RISING CLAMP**



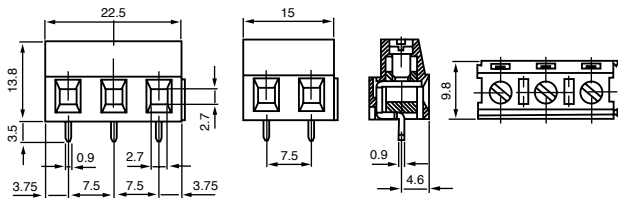
**SPECIFICATION**

**Electrical Characteristics**

**Rating Current:** 20A/750V  
**Dielectric Voltage:** ≥ 3kV/60sec  
**Insulation Resistance:** ≥ 5MΩ  
**Operating Temperature:** -20°C to +125°C  
**Short Period:** 160°C

**Moulding:** UL94-V0 flame retardant PA66  
**Pin/terminal:** 5μ tinned, nickel plated brass  
**Wire clamp:** Nickel plated brass  
**Screw/torque:** M3 steel, 6μ zinc colour passivated and tropicalised/0.5Nm  
**Recommended PCB hole size:** ø1.3mm

**OUTLINE DRAWING**



**ORDERING INFORMATION**

DBC	TB	33	/2
Dubilier Connectors	Series Terminal Blocks	Style	No of Ways
			2 = 2ways 3 = 3ways
* other number of ways are available Please consult the office for further details			

**TERMINAL BLOCKS**

- 7.5mm pitch
- Flame retardant material
- 2.5mm<sup>2</sup> wire acceptance
- Interlocking
- Professional rising clamp
- UL/ CSA approved



**7.5mm PITCH 90° MOUNT**

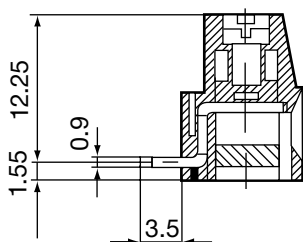


**SPECIFICATION**

**Rating:** 20A/750V  
**Dielectric Strength:** ≥3KV/60sec  
**Insulation Resistance:** ≥5MΩ  
**Working temperature:** -20°C to 125°C  
**Short Period:** 160°  
**Moulding:** UL94V-0 flame retardant PA66  
**Pin/terminal:** 5μ tinned, nickel plated brass

**Wire clamp:** Nickel plated brass  
**Screw/torque:** M3 steel, 6 μ zinc colour passivated and tropicalised/0.5Nm  
**Recommended PCB hole size:** ø1.3mm

**OUTLINE DRAWING**



**ORDERING INFORMATION**

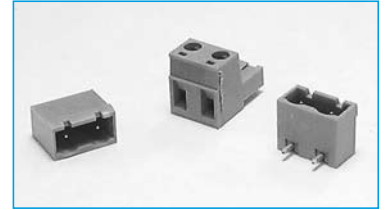
DBC	TB	88	/2
Dubilier Connectors	Series Terminal Block	Style	Nº of Ways
			2 = 2 ways 3 = 3 ways
* Other Number of ways are available up to 12 Please consult office for further details			



## TERMINAL BLOCKS

## 7.5mm PITCH PLUG IN

- 2-12 pole solid block
- Closed and open headers
- Horizontal female plug style
- Professional rising clamp
- Moulded in green UL94-V0 flame retardant PA66
- 2.5mm<sup>2</sup> cable entry
- UL, CE approved



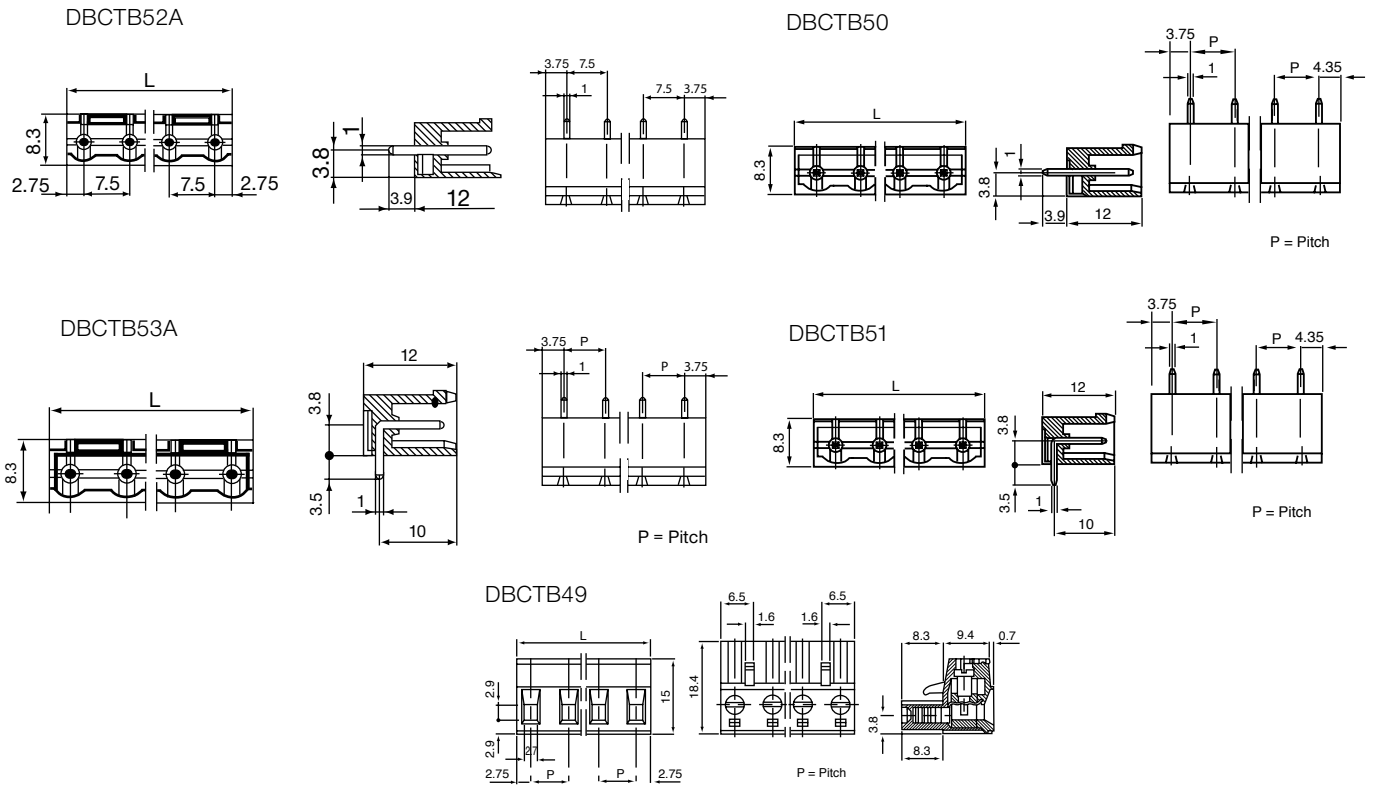
## SPECIFICATION

### Electrical Characteristics

**Rating Current:** 12A/750V  
**Dielectric Voltage:** ≥ 3kVac/60sec  
**Insulation resistance:** ≥ 5MΩ  
**Operating Temperature:** -20°C to +125°C  
**Short Period:** 160°C

**Moulding:** UL94-V0 flame retardant PA66  
**Pin/terminal:** 5μ tinned phosphor bronze  
**Rising clamp:** 5μ nickel copper flash brass  
**Screw/torque:** M3 steel, 6μ zinc, colour passivated and tropicalised/0.5Nm  
**Recommended PCB hole size:** ø1.4mm

## OUTLINE DRAWING



## ORDERING INFORMATION

DBC	TB	49	/2
Dubilier Connectors	Series Terminal Blocks	Style	No of Ways
		49 = Female	2 = 2ways
		50 = Closed End Str	3 = 3ways
		51 = Closed End R/A	etc.
		52A = Open End Str	* Other Number of ways are available up to 12
		53A = Open End R/A	Please consult office for further details