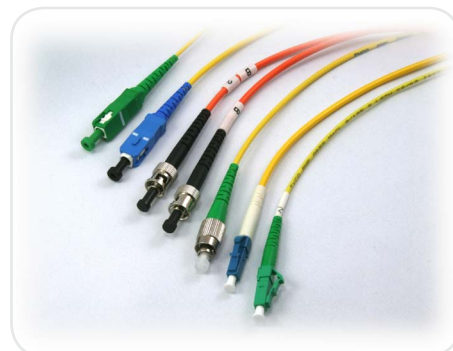


OPTICAL JUMPER CABLE

JUMP Series

Product Description

Oplink's Optical Jumper Cable is designed for interconnection for all optical systems or components. Oplink offer a wide range of industrial standard jumper cables with various fiber and fiber jacket types, connectors, and lengths. With our highly integrated design and manufacturing capability, Oplink can also provide customized products to help our customer for better opportunities. Our jumper cable complies with industry green initiative such as Rohs.



Features

- ◆ Various Option of fiber and connector types and lengths
- ◆ Environmental Green Plan Compliance
- ◆ High Reliability and Stability
- ◆ Premium Optical Connector
- ◆ 100% Ferrule Turning to minimize Insertion Loss
- ◆ 100% DORC Test

Applications

- ◆ Optical System Access Network
- ◆ System interconnection

Product Specifications

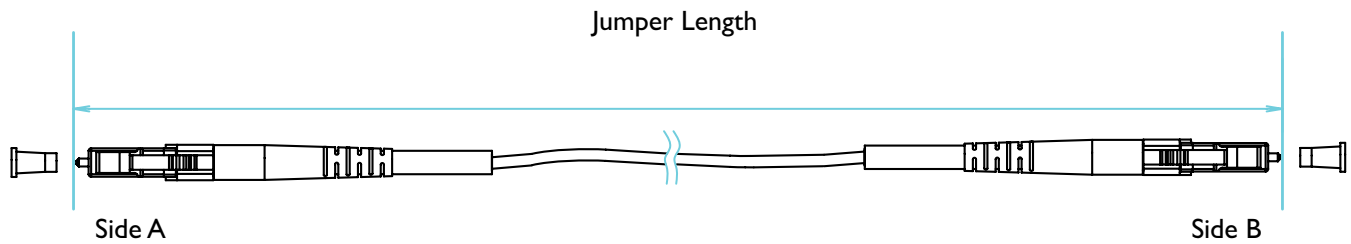
Parameters		S Grade (Low Loss)	P Grade (Standard)	Unit.
Operating Wavelength	Single-Mode	1260 ~ 1620		nm
	Multi-Mode	850 & 1310		
Insertion Loss (PC/UPC Type)	Single-Mode	0.15	0.25	dB
	Multi-Mode*		0.30	
Insertion Loss (APC Type)	Single-Mode		0.30	dB
Return Loss	Single-Mode PC Type	45		dB
	Single-Mode UPC Type	50		
	Single-Mode APC Type	60		
	Multi-Mode	35		
Connection Durability		500		mating
Connector Repeatability		0.2		dB
Operating Temperature		-20 ~ 70		°C
Fiber Type	Single Mode Fiber	SMF-28		
	Multi Mode Fiber	50/125 μm		
		62.5/125 μm		

Note:

¹⁾ Tested at 1310nm and 1550nm for single-mode jumper, 850nm and 1310nm for multi-mode jumper..

²⁾ *: For jumper length less than 5 meter. Additional 0.03dB for every 10 meters within 850nm window, and 0.01dB for 1310nm window.

Mechanical Drawing



Fiber Tolerance

Parameter	Symbol	Unit	Remark	Min.	Max.
Length	L	m	For illustration see drawing		
Length Deviation*	L ≤ 1m	mm	@ Jumper w/ length up to 1m	- 20	+20
	1m < L ≤ 3m	mm	@ Jumper w/ length up to 1-3m	- 50	+50
	3m < L ≤ 10m	mm	@ Jumper w/ length up to 3-10m	-100	+100
	L > 10m	%	@ Jumper w/ length more than 10m	- 2%	+ 2%

Ordering Information

JUMP

Package Type 1 = Simplex 2 = Duplex	Jacket Type 1 = 900µm (SM/MM) 2 = 1.8mm (SM, Yellow) 3 = 2.0mm (SM, Yellow) 4 = 2.4mm (SM, Yellow) 5 = 3.0mm (SM, Yellow) 6 = 2.0mm (MM, Orange) 7 = 3.0mm (MM, Orange) 8 = 2.0mm (OM3, Aqua) 9 = 3.0mm (OM3, Aqua) A = 2.0mm (OM4, Purple) B = 3.0mm (OM4, Purple)	Jumper Length 0005 = 0.5m 0010 = 1.0m 0020 = 2.0m . 0100 = 10m . . . 0990 = 99 m 1000 = 100m	IL Grade ¹ 0 = P Grade 1 = S Grade	Ferrule Type ² 0 = PC 1 = Cone 2 = Step	Connector (Side A) 1 = None 2 = FC/PC 3 = FC/UPC 4 = FC/APC 5 = SC/PC 6 = SC/UPC 7 = SC/APC 8 = ST 9 = LC/PC A = MU B = LC/APC C = E2000/APC E = LC/UPC F = E2000/PC	Connector (Side B) 2 = FC/PC 3 = FC/UPC 4 = FC/APC 5 = SC/PC 6 = SC/UPC 7 = SC/APC 8 = ST 9 = LC/PC A = MU B = LC/APC C = E2000/APC E = LC/UPC F = E2000/PC

Fiber Type
S = Single mode
M = Multi mode (50/125)
N = Multi mode (62.5/125)
3 = OM3 (50/125, 10G)
4 = OM4 (50/125, 100G)

Note:

- 1) IL Grade:
S Grade is only for Single Mode PC/UPC Type.
- 2) Ferrule Type:
PC/UPC Type is only PC Ferrule for optional.
APC Type is Cone or Step Ferrule for optional, but LC/APC is only Cone Ferrule for optional.