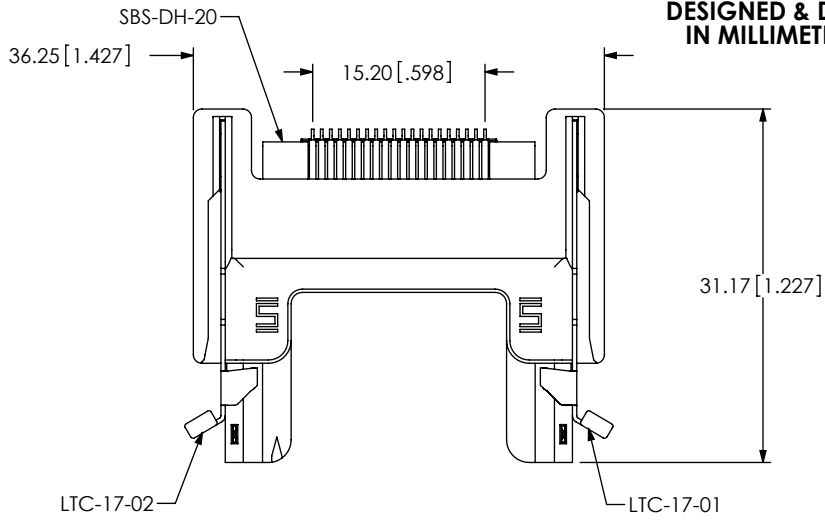


DO NOT SCALE FROM THIS PRINT

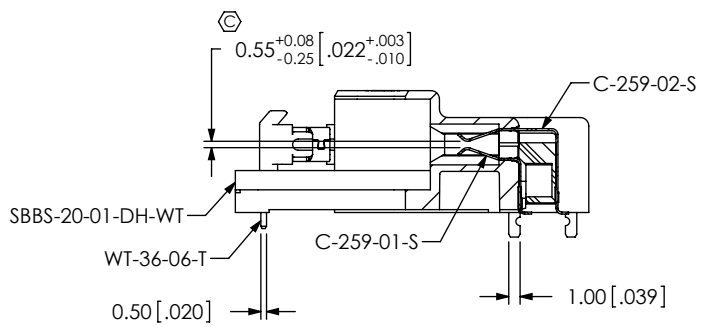
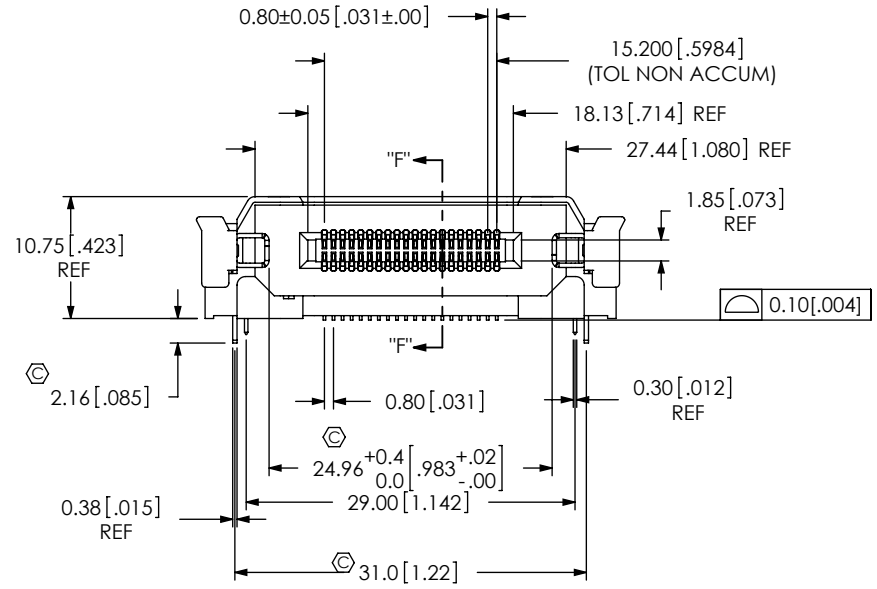
DESIGNED & DIMENSIONED IN MILLIMETERS [INCHES]



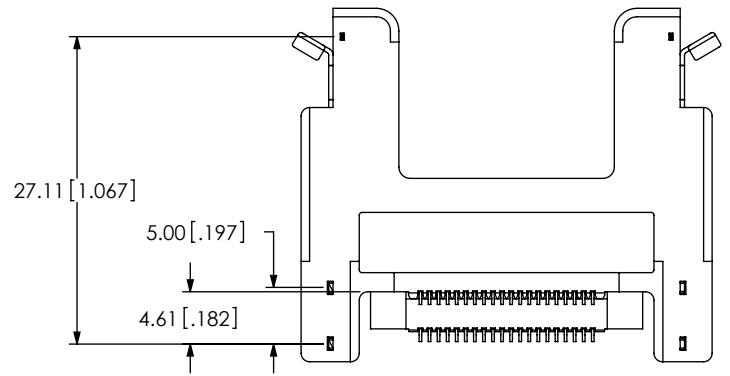
SBS-120-01-S-DH-WT-ML

No OF POSITIONS _____
 -20: 20 POSITIONS (PER ROW)
 CARD THICKNESS _____
 -01: 1.60 [.063] THICK CARD
 PLATING _____
 -S: .00076 [.000030] GOLD ON CONTACT
 MATTE TIN ON TAIL


OPTIONS
 -ML: METAL LATCH
 OPTIONS
 -WT: WELD TAB
 ROW SPECIFICATION
 -DH: DOUBLE HORIZONTAL

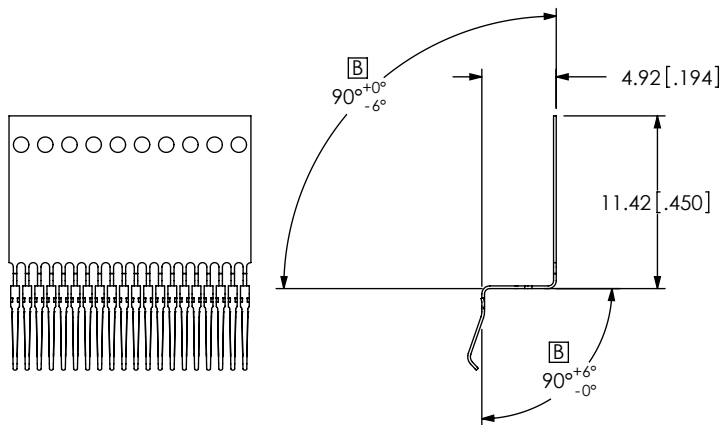


SECTION "F"-"F"

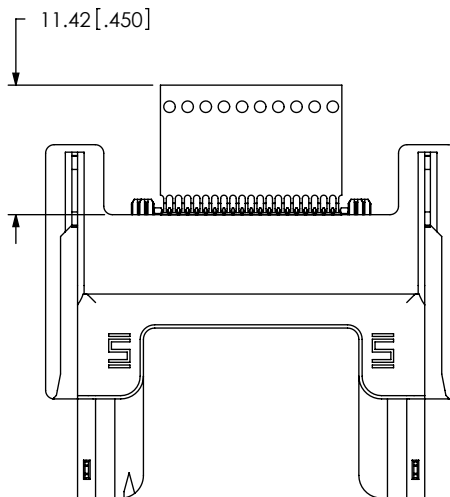


- NOTES:
1. Ⓢ REPRESENTS A CRITICAL DIMENSION.
 2. MINIMUM CONTACT PUSHOUT FORCE: 2.2N [.50 LBF].
 3. MINIMUM LATCH PUSHOUT FORCE: 2.2N [.50 LBF].
 4. MINIMUM WELD TAB PUSHOUT FORCE: 2.2N [.50 LBF].
 5. PACKAGED IN TRAYS UNLESS OTHERWISE SPECIFIED.

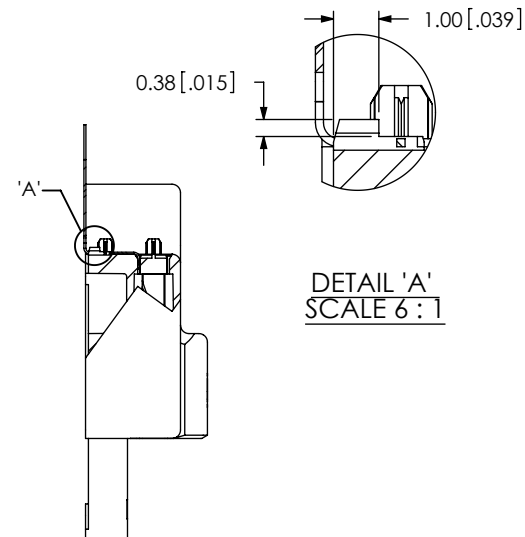
<p>UNLESS OTHERWISE SPECIFIED, DIMENSIONS ARE IN MILLIMETERS TOLERANCES ARE: DECIMALS ANGLES X.X: ±[0.3] .01 2° X.XX: ±[0.13] .005 X.XXX: ±[0.051] .0020</p>	<p>PROPRIETARY NOTE THIS DOCUMENT CONTAINS INFORMATION CONFIDENTIAL AND PROPRIETARY TO SAMTEC, INC. AND SHALL NOT BE REPRODUCED OR TRANSFERRED TO OTHER DOCUMENTS OR DISCLOSED TO OTHERS OR USED FOR ANY PURPOSE OTHER THAN THAT WHICH IT WAS OBTAINED WITHOUT THE EXPRESSED WRITTEN CONSENT OF SAMTEC, INC.</p>	 <p>520 PARK EAST BLVD, NEW ALBANY, IN 47150 PHONE: 812-944-6733 FAX: 812-948-5047 e-Mail: info@SAMTEC.com code: 55322</p>
<p>MATERIAL: DO NOT SCALE DRAWING INSULATOR: LCP, COLOR: BLACK CONTACT: BRUSH ALLOY, 390 HT LATCH: 301 STAINLESS STEEL</p>	<p>SHEET SCALE: 1.5:1</p>	<p>DESCRIPTION: SBS DOUBLE HORIZONTAL ASSEMBLY DWG. NO. SBS-120-01-S-DH-WT-ML BY: B RAY 08/11/2008 SHEET 1 OF 3</p>



INPROCESS 1
(FORM C-259-01-S)

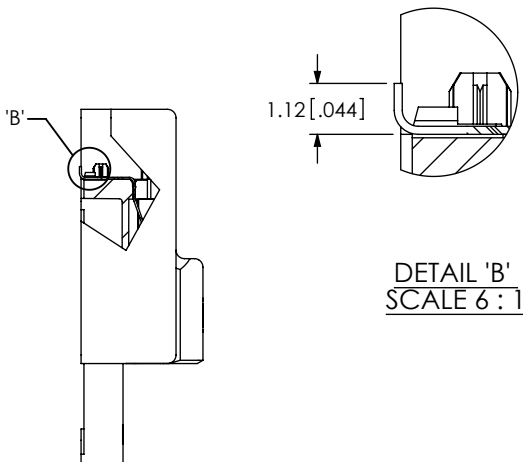


INPROCESS 2
(INSERT C-259-01-S COMB)



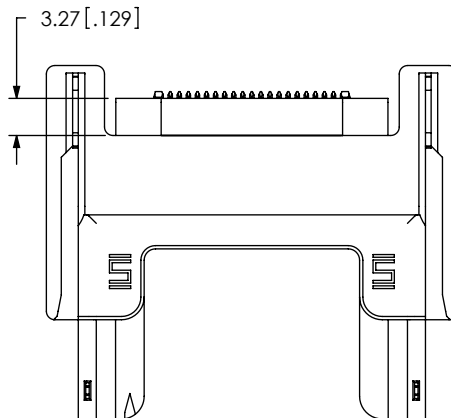
INPROCESS 3
(HEATSTAKEC-259-01-S)

DETAIL 'A'
SCALE 6:1

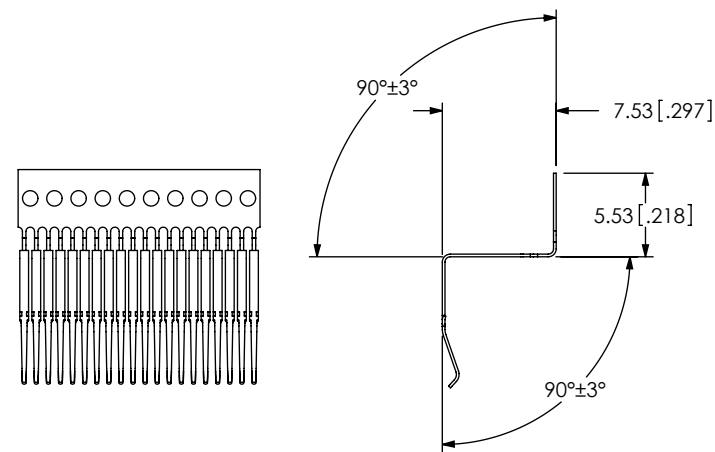


INPROCESS 4
(SHEAR C-259-01-S)

DETAIL 'B'
SCALE 6:1



INPROCESS 5
(ADD SBS-DH-20)



INPROCESS 6
(FORM C-259-02-S)

PROPRIETARY NOTE
THIS DOCUMENT CONTAINS INFORMATION
CONFIDENTIAL AND PROPRIETARY TO
SAMTEC, INC. AND SHALL NOT BE REPRODUCED
OR TRANSFERRED TO OTHER DOCUMENTS OR
DISCLOSED TO OTHERS OR USED FOR ANY
PURPOSE OTHER THAN THAT WHICH IT WAS
OBTAINED WITHOUT THE EXPRESSED WRITTEN
CONSENT OF SAMTEC, INC.

DO NOT SCALE DRAWING

SHEET SCALE: 1.5:1

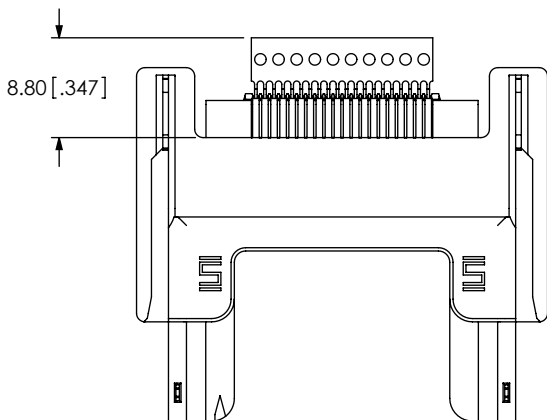
samtec

520 PARK EAST BLVD, NEW ALBANY, IN 47150
PHONE: 812-944-6733 FAX: 812-948-5047
e-Mail: info@SAMTEC.com code: 55322

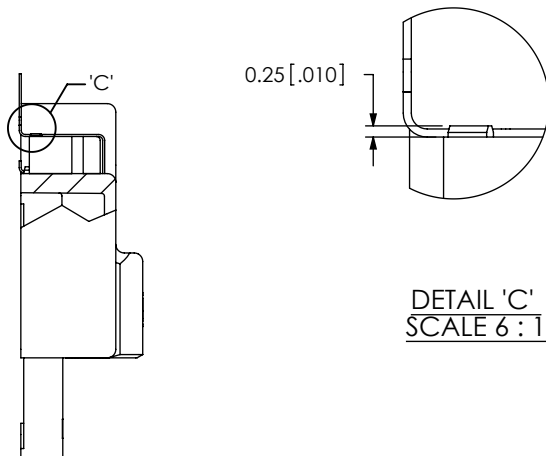
DESCRIPTION:
SBS DOUBLE HORIZONTAL ASSEMBLY

DWG. NO.
SBS-120-01-S-DH-WT-ML

BY: B RAY 08/11/2008 SHEET 2 OF 3

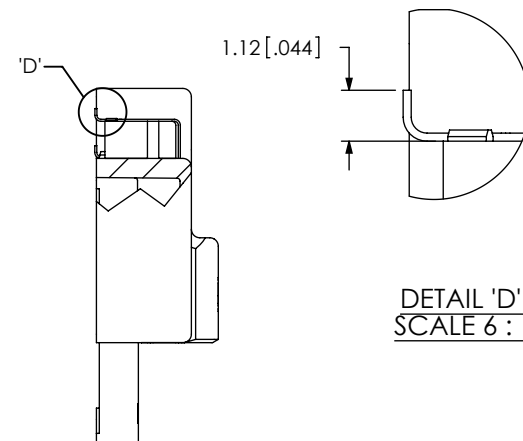


INPROCESS 7
(INSERT C-259-02-S COMB)



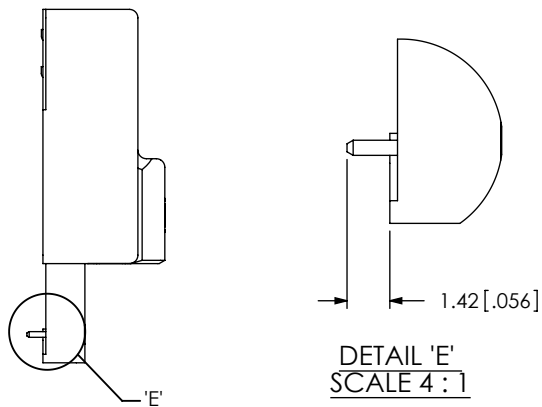
INPROCESS 8
(HEASTAKE C-259-02-S)

DETAIL 'C'
SCALE 6 : 1



INPROCESS 9
(SHEAR C-259-02-S)

DETAIL 'D'
SCALE 6 : 1



INPROCESS 10
(INSERT WT-36-06-T)

DETAIL 'E'
SCALE 4 : 1

PROPRIETARY NOTE
THIS DOCUMENT CONTAINS INFORMATION CONFIDENTIAL AND PROPRIETARY TO SAMTEC, INC. AND SHALL NOT BE REPRODUCED OR TRANSFERRED TO OTHER DOCUMENTS OR DISCLOSED TO OTHERS OR USED FOR ANY PURPOSE OTHER THAN THAT WHICH IT WAS OBTAINED WITHOUT THE EXPRESSED WRITTEN CONSENT OF SAMTEC, INC.

DO NOT SCALE DRAWING

SHEET SCALE: 1.5:1

samtec

520 PARK EAST BLVD, NEW ALBANY, IN 47150
PHONE: 812-944-6733 FAX: 812-948-5047
e-Mail: info@SAMTEC.com code: 55322

DESCRIPTION: SBS DOUBLE HORIZONTAL ASSEMBLY

DWG. NO. SBS-120-01-S-DH-WT-ML

BY: B RAY 08/11/2008 SHEET 3 OF 3