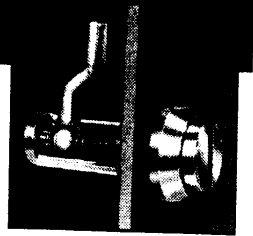


PAWL LATCHES – DP140 Series

Another variation on the DP106 series, offering a similar grip range, with the additional feature of the lower profile head/centre spindle ejecting to signal when the latch is undone.



ADVANTAGES

- ★ Head ejects to signal when unlocked, guards against door remain unlocked after servicing.
- ★ Quick access – locks/unlocks in 90° adjustment feature provides for dustproof sealing when gasket used.
- ★ Attractive styling – unobtrusive head profile.
- ★ Single hole mounting.
- ★ Single operation for adjustability and locking.
- ★ Available in short and long grip versions.

The DP140 Adjustable Pawl Latch is designed for use on Air Handling Units, Electronic cubicle doors, passenger transport valance doors and in the machine tool and sheet metal industries.

The pawl finger travels up a threaded spindle and operation is achieved by a quarter clock-wise turn to lock; the head remaining flush with the excutcheon when adjusted to the fully locked position. A quarter turn anti-clockwise releases the latch, the head ejecting to signal its unlocked state

TECHNICAL INFORMATION

Panel Thickness Range – 1,22 – 3,24 (.048 – .128 max)
Grip Range.

(a) Short Grip (Pawl curved toward panel) 8 min – 23 max
(.315 – .905)

(b) Long Grip (Pawl curved away from panel) 23,5 min – 38 max
(.925 – 1.496)

INSTALLATION

The latch is supplied assembled. The pawl finger should be wound down to bottom of barrel and inserted through hole in panel. The lock nut is slipped over pawl, threaded onto barrel and wrenched up securely. To ensure pawl is correctly positioned when locked, the barrel is D shaped, but the latch can be fitted to round hole if correctly aligned.

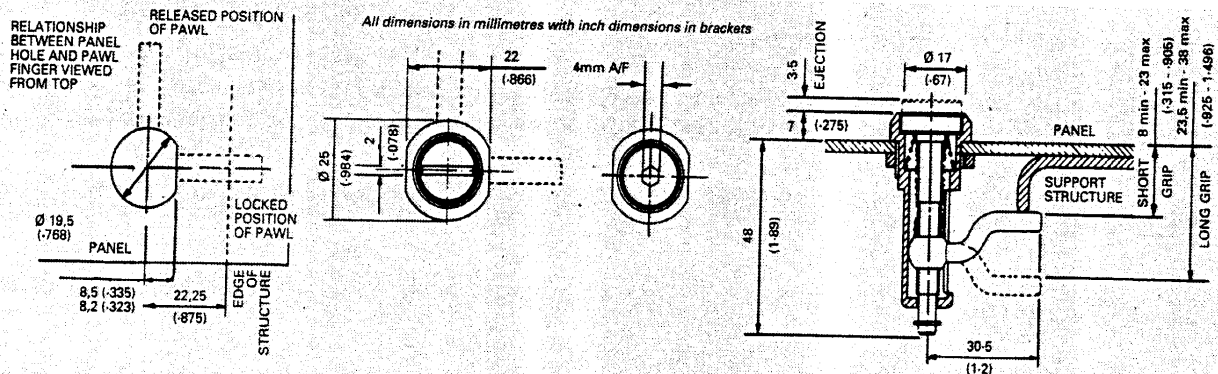
CALL UP

DP140S – Short Grip, Slotted Head

DP140L – Long Grip, Slotted Head

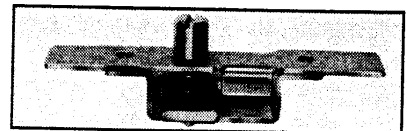
DP140SH – Short Grip, Hexagon Recess Head

Standard Finish – Zinc Plate, clear passivate



PAWL LATCHES – DP150 Series

This heavy duty latch is similar in concept to the well known "Budget Lock" but differs in having the added benefit of being adjustable. This provides for gasket compression and added strength.



HEAVY DUTY ADJUSTABLE PAWL LATCH

- ★ Quick release with 90° operation.
- ★ Three head styles.
- ★ Will compress fitted Gasket.
- ★ Resists vibration.
- ★ 6mm Grip Range.

TECHNICAL INFORMATION

Material – Mild Steel

Plating – Zinc with chromate passivation BS 1706 Zn3.

INSTALLATION

This latch may be fixed to back of door by using 6mm screws or, the extra flange allows for moulding into G.R.P. Panel.

OPERATION

This Heavy duty latch operates through 90° to provide quick release. When gaskets are fitted the latch has 6 mm of adjustment. The latch may be tightened by continuing to turn the operating screw in a clockwise movement. Reverse operation unlatches the fastener.

PART No. CALL UP

DP150S – Slotted head style – Use 2mm tipped screwdriver.

DP150H Hexagon socket recess – Use 6mm allen key.

DP150Q Square socket recess – Use 6,5mm or tapered key.

