

RED INDICATES ORIGINAL

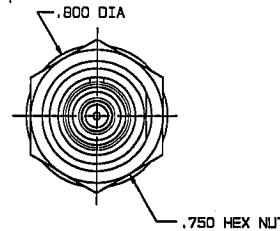
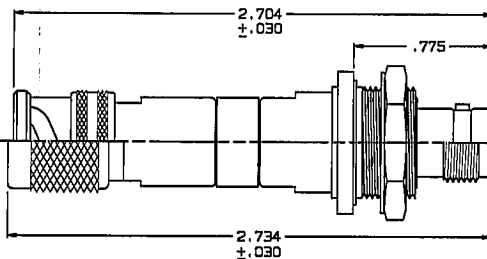
DATA CONTAINED IN THIS DOCUMENT IS PROPRIETARY TO TROMPETER ELECTRONICS, INC. AND SHALL NOT BE RELEASED, COPIED OR USED FOR PRODUCTION OR MANUFACTURE WITHOUT EXPRESS WRITTEN PERMISSION.

REV		ED	DESCRIPTION	305-1237	SH 1C
REV	ED		DESCRIPTION	OWN	APPROVED
B	12531		REVISED NOTE 5 SHEET 2; 805-1816-XX AND 8-1598-XX WERE 805-1816-10 AND 8-1598-10; SEE ECD	DKC	<i>[Signature]</i>
					DATE 7-20-98

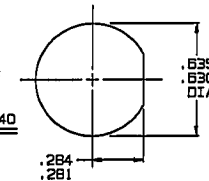
P2 CONN TYPE	FIG NO	P1 CONN TYPE																								INCH	MM						
		PL74						PL75						PL75FL						PL375								PL73 Δ					
		SCHEMATICS																															
		A1	A2	A3	A4	A5	A6	A1	A2	A3	A4	A5	A6	A1	A2	A3	A4	A5	A6	A1	A2	A3	A4	A5	A6			A1	A2	A3	A4	A5	A6
		DASH NUMBERS																															
BJ74	1A	-1	-2	-3	-4	-5	-6	-7	-8	-9	-10	-11	-12	-13	-14	-15	-16	-17	-18	-19	-20	-21	-22	-23	-24								
BJ74TL	1A	-25	-26	-27	-28	-29	-30	-31	-32	-33	-34	-35	-36	-37	-38	-39	-40	-41	-42	-43	-44	-45	-46	-47	-48								
BJ74FL	1A	-49	-50	-51	-52	-53	-54	-55	-56	-57	-58	-59	-60	-61	-62	-63	-64	-65	-66	-67	-68	-69	-70	-71	-72								
BJ374	1B	-73	-74	-75	-76	-77	-78	-79	-80	-81	-82	-83	-84	-85	-86	-87	-88	-89	-90	-91	-92	-93	-94	-95	-96								
BJ79	2A	-97	-98	-99	-100	-101	-102	-103	-104	-105	-106	-107	-108	-109	-110	-111	-112	-113	-114	-115	-116	-117	-118	-119	-120	-193	-194	-195	-196	-197	-198	Δ	
BJ79TL	2A	-121	-122	-123	-124	-125	-126	-127	-128	-129	-130	-131	-132	-133	-134	-135	-136	-137	-138	-139	-140	-141	-142	-143	-144								
BJ79FL	2A	-145	-146	-147	-148	-149	-150	-151	-152	-153	-154	-155	-156	-157	-158	-159	-160	-161	-162	-163	-164	-165	-166	-167	-168								
BJ379	2B	-169	-170	-171	-172	-173	-174	-175	-176	-177	-178	-179	-180	-181	-182	-183	-184	-185	-186	-187	-188	-189	-190	-191	-192								

INCH	MM
.005	0.13
.030	0.76
.109	2.77
.140	3.56
.218	5.54
.221	5.61
.281	7.14
.284	7.21
.505	12.83
.510	12.95
.563	14.30
.630	16.00
.635	16.13
.687	17.45
.750	19.05
.775	19.69
.800	20.32
2.654	67.41
2.704	68.68
2.734	69.44

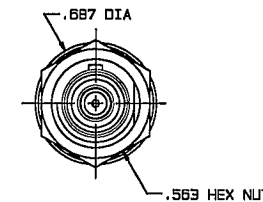
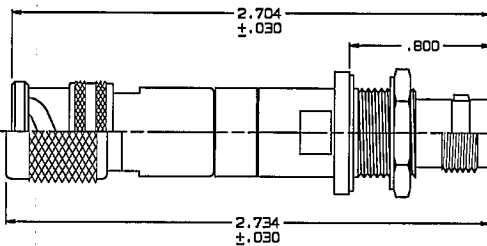
-1 SHOWN
CONN P1
FIG 1A



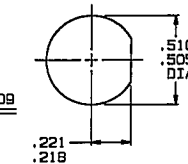
RECOMMENDED
PANEL CUTOUT
MAX PANEL
THICKNESS .140



-91 SHOWN
CONN P1
FIG 1B



RECOMMENDED
PANEL CUTOUT
MAX PANEL
THICKNESS .109



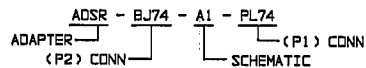
-97 SHOWN
CONN P1
FIG 2A

-187 SHOWN
CONN P1
FIG 2B

6. ALL MATERIALS MEET THE OUTGASSING REQUIREMENTS OF NASA SPECIFICATION SP-R-0022A.

Δ FOR -193 THRU -198, VIEW NOT SHOWN, TOTAL LENGTH SHALL BE 2.654 ±.030

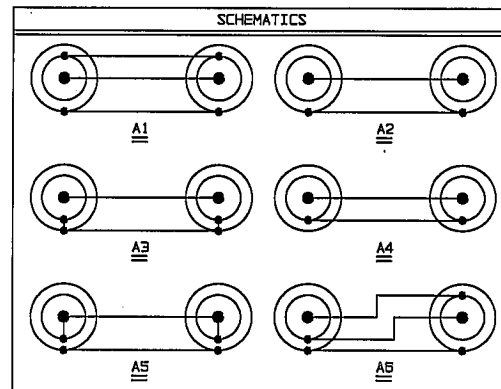
4. EXAMPLE OF COMPLETE MODEL NO:



3. WITHIN & BETWEEN SERIES ADAPTER, MALE CONCENTRIC TWINAX/TRIAX 2/34-LUG & THREADED BAYONET PLUG TO FEMALE 2/34-LUG & THREADED, INSULATED & NONINSULATED BULKHEAD MOUNT JACK

2. FINISH: TFS-1A (NICKEL)

1. ALL DIMENSIONS ARE REFERENCED IN INCHES



QTY	DESCRIPTION	PART NUMBER	ITEM
TOL UNLESS SPECIFIED .001 ± .002 ± .005 ± ANGLES	TROMPETER ELECTRONICS, INC.	ADAPTERS; MALE *70* SERIES BULKHEAD MOUNT JACKS SPACE RATED	
OWN DKC 8-28-98	MATERIAL	CODE IDENT	REV
CHK IKM 9-29-98		14949	305-1237
ENGR			B
APPR			
NEXT ASSY	SCALE 2/1	DATE 7-31-98	SHEET 1C