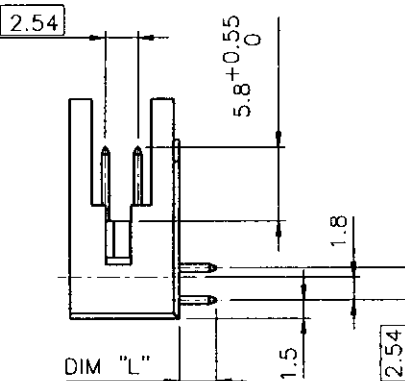
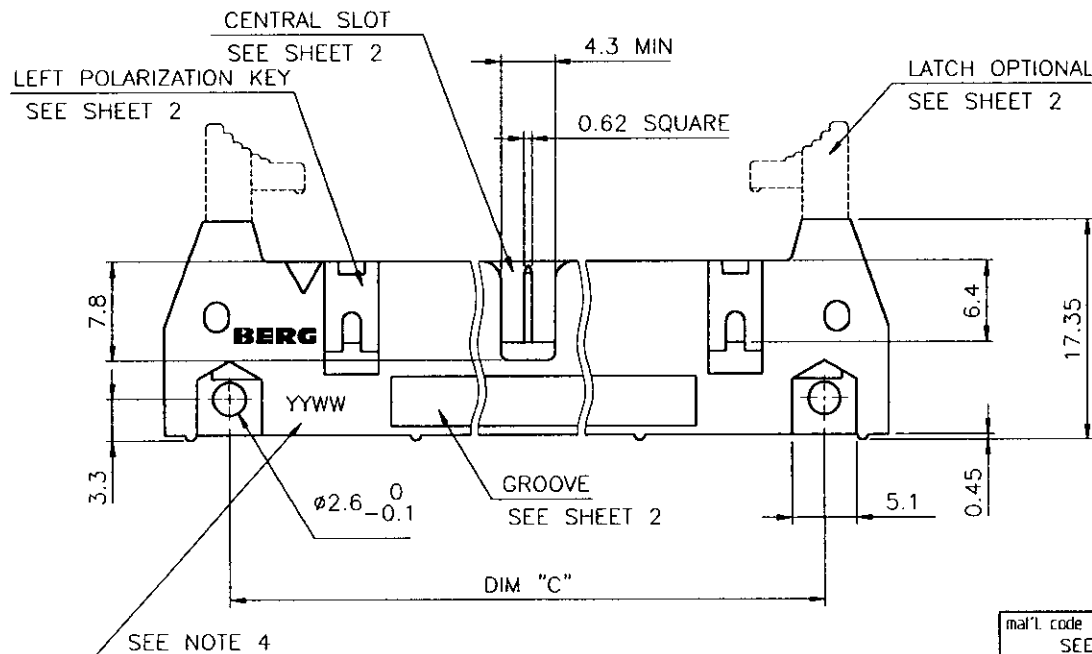
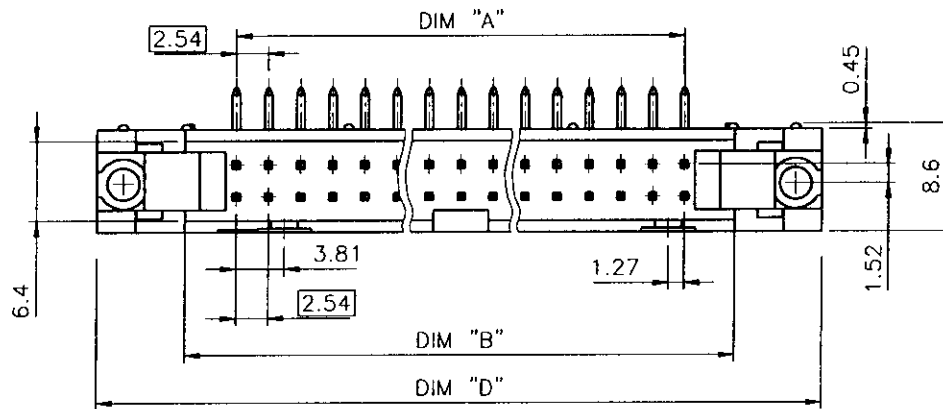




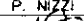
PRODUCT NUMBER	DIM "A"	DIM "B"	DIM "C"	DIM "D"
77341-XY	SEE TABLE SHEET 213 2/2			



NOTES:

- 1 - MATERIAL CONTACT: COPPER ALLOY.
- 2 - MATERIAL PLASTIC: POLYESTER 30% GLASSFILLED FLAME RETARDANT PER UL-94-V0, COLOR GREY.
- 3 - PRODUCTS PACKED IN TUBES.
- 4 - PART NUMBER FOLLOWED BY A "B" IF PRINTING IS REQUIRED (EXAMPLE 77341-020B) SEE TA 800 FOR PRINTING SPECIFICATIONS.

0.25 μ m Au MIN	3.81 μ m SnPb MIN
CONTACT AREA	SOLDER TAIL AREA
PLATING THICKNESS OVER 1.27 μ m Ni MIN	

mal't. code				tolerances unless otherwise specified				CUSTOMER COPY		BERG ELECTRONICS		
SEE NOTES								COPY		QKIE HEADER		
lir	ecn no	dr	date	linear				projection		title	RIGHT ANGLE, 0.25µm Au	
J	10891	PCR	89.07.21					angles				
K	F50886	OMA	95.11.28						mm	product family	QKIE HDR	code
				dr	O. MATHEVON	95.11.28			scale	size	dwg no	213
				enr	JM PHAMVAN	95.11.28		2.5:1	A3	77341		1 of 2
				chr	P. NIZZ	95.11.28						
				appd	JM. 	95.11.28						
sheet index	revision sheet	K	K									
		1	2									

PDM: Rev:K

STATUS: Released

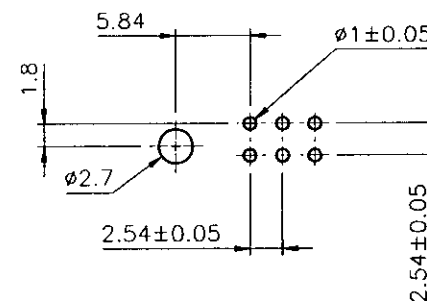
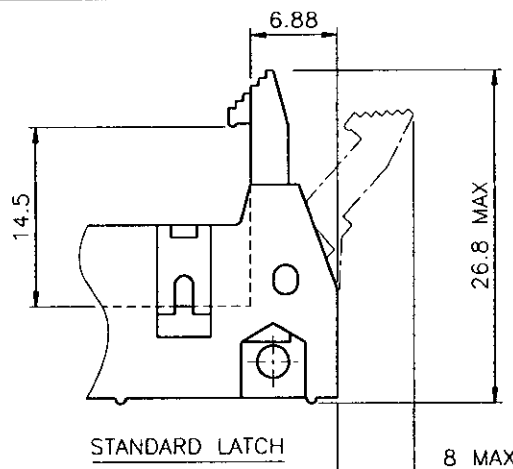
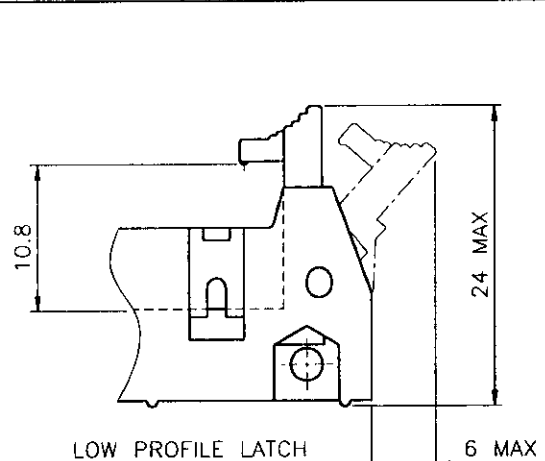
Printed: Sep 15, 2004

For more information, please contact your local distributor or visit our website at www.berg-electronics.com.
 This is a preliminary drawing. It is not for manufacturing. It is for information only.

BERG
ELECTRONICS

For more information, please contact your local distributor or visit our website at www.berg-electronics.com.
 This is a preliminary drawing. It is not for manufacturing. It is for information only.

PRODUCT NUMBER	SIZE	DIM "A"	DIM "B"	DIM "C"	DIM "D"	CENTRAL SLOT	LEFT POL KEY	GROOVE
77341-X06	2x3	5.08	13.15	22.86	26.92	NO	NO	NO
77341-X08	2x4	7.62	15.69	25.4	29.46	NO	NO	NO
77341-X10	2x5	10.16	18.23	27.94	32	YES	NO	NO
77341-X14	2x7	15.24	23.31	33.02	37.08	YES	NO	NO
77341-X16	2x8	17.78	25.85	35.56	39.62	YES	YES	YES
77341-X18	2x9	20.32	28.39	38.1	42.16	YES	YES	NO
77341-X20	2x10	22.86	30.93	40.64	44.7	YES	YES	YES
77341-X26	2x13	30.48	38.55	48.26	52.32	YES	YES	YES
77341-X34	2x17	40.64	48.71	58.42	62.48	YES	YES	NO
77341-X40	2x20	48.26	56.33	66.04	70.1	YES	YES	YES
77341-X44	2x22	53.34	61.41	71.12	75.18	YES	YES	YES
77341-X50	2x25	60.96	69.03	78.74	82.8	YES	YES	YES
77341-X60	2x30	73.66	81.73	91.44	95.5	YES	YES	YES
77341-X64	2x32	78.74	86.81	96.52	100.58	YES	YES	YES



77341-8YY			•			•
77341-7YY			•		•	
77341-6YY			•	•		
77341-5YY	•					•
77341-4YY	•				•	
77341-3YY	•			•		
77341-2YY	•					•
77341-1YY	•				•	
77341-0YY	•			•		
PRODUCT	2.90	4.50	15.50	WITHOUT LATCH	STANDARD LATCH	LOW PROFILE LATCH
CODE "X"	DIM "L"			EJECTOR LATCH OPTION		

mat'l. code				tolerances unless otherwise specified		CUSTOMER COPY		BERG ELECTRONICS	
lir	ecn no	dr	date	linear	angles	projection	title	product family	code
J	10891	PGR	89.07.21			mm	RIGHT ANGLE, 0.25µm Au	OKIE HDR	213
K	F50886	OMA	95.11.28			scale	size	dwg no	sheet
				dr	O. MATHEVON	95.11.28	A3	77341	2 of
				eng	JM PHAMVAN	95.11.28			
				chr	P. NIZZI	95.11.28			
				apod	JM P.	95.11.28			
sheet index	revision	sheet							