



8192 x 8 PROM Power Switched and Reprogrammable

Features

- CMOS for optimum speed/power
- Windowed for reprogrammability
- High speed
 - 20 ns (commercial)
 - 25 ns (military)
- Low power
 - 660 mW (commercial)
 - 770 mW (military)
- Super low standby power
 - Less than 85 mW when deselected
- EPROM technology 100% programmable
- 5V ±10% V_{CC}, commercial and military

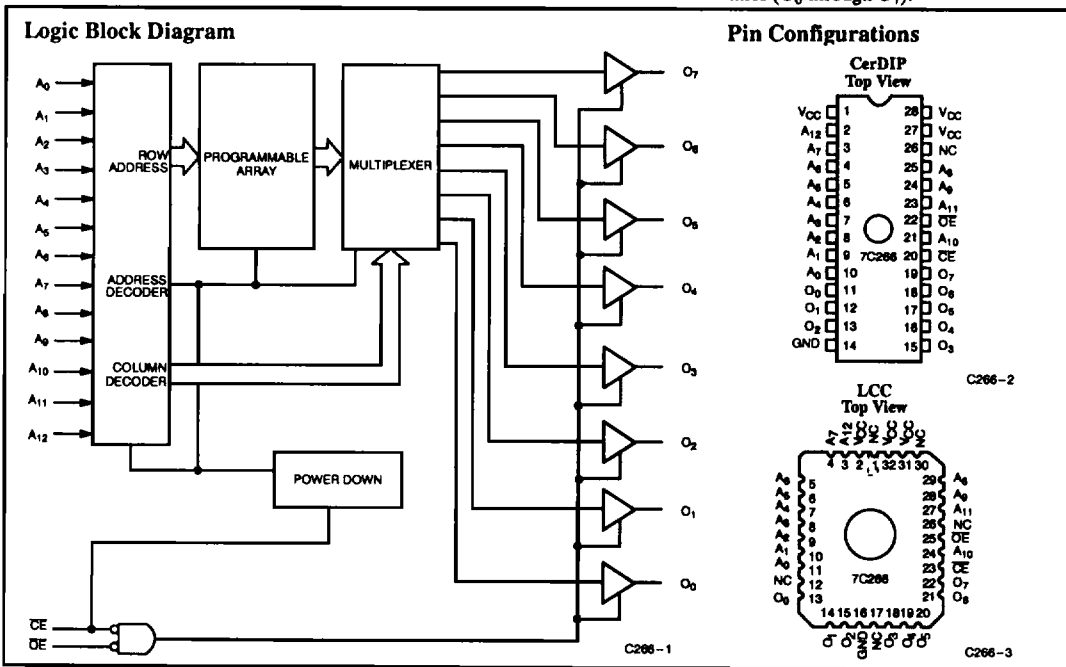
- TTL-compatible I/O
- Direct replacement for 27C64 EPROMs

Functional Description

The CY7C266 is a high-performance 8192 word by 8 bit CMOS PROM. When deselected, the CY7C266 automatically powers down into a low-power standby mode. It is packaged in a 600-mil-wide package. The reprogrammable packages are equipped with an erasure window; when exposed to UV light, these PROMs are erased and can then be reprogrammed. The memory cells utilize proven EPROM floating-gate technology and byte-wide intelligent programming algorithms.

The CY7C266 is a plug-in replacement for EPROM devices. The EPROM cell requires only 12.5V for the super voltage and low-current requirements allow for gang programming. The EPROM cells allow for each memory location to be tested 100%, as each location is written into, erased, and repeatedly exercised prior to encapsulation. Each PROM is also tested for AC performance to guarantee that after customer programming, the product will meet DC and AC specification limits.

Reading is accomplished by placing an active LOW signal on OE and CE. The contents of the memory location addressed by the address lines (A₀ through A₁₂) will become available on the output lines (O₀ through O₇).



Selection Guide

		7C266-20	7C266-25	7C266-35	7C266-45	7C266-55
Maximum Access Time (ns)		20	25	35	45	55
Maximum Operating Current (mA)	Commercial	120	120	100	100	100
	Military		140		120	120
Maximum Standby Current (mA)	Commercial	15	15	15	15	15
	Military		15		15	15

Maximum Ratings

(Above which the useful life may be impaired. For user guidelines, not tested.)

Storage Temperature	- 65°C to +150°C
Ambient Temperature with Power Applied	- 55°C to +125°C
Supply Voltage to Ground Potential (Pin 28 to Pin 14)	- 0.5V to +7.0V
DC Voltage Applied to Outputs in High Z State	- 0.5V to +7.0V
DC Input Voltage	- 3.0V to +7.0V
DC Program Voltage	14.0V

Static Discharge Voltage	> 2001V (per MIL-STD-883, Method 3015)
Latch-Up Current	> 200 mA
UV Exposure	7258 Wsec/cm ²

Operating Range

Range	Ambient Temperature	V _{CC}
Commercial	0°C to +70°C	5V ± 10%
Industrial ^[1]	- 40°C to +85°C	5V ± 10%
Military ^[2]	- 55°C to +125°C	5V ± 10%

Electrical Characteristics Over the Operating Range^{3, 4}

Parameter	Description	Test Conditions	7C266-20		7C266-25		Units	
			Min.	Max.	Min.	Max.		
V _{OH}	Output HIGH Voltage	V _{CC} = Min., I _{OH} = - 2.0 mA	Com'l	2.4		2.4		V
			Mil			2.4		
V _{OL}	Output LOW Voltage	V _{CC} = Min., I _{OL} = 8.0 mA	Com'l		0.4		0.4	V
		V _{CC} = Min., I _{OL} = 6.0 mA	Mil				0.4	
V _{IH}	Input HIGH Voltage		2.0		2.0		V	
V _{IL}	Input LOW Voltage			0.8		0.8	V	
I _{IX}	Input Current	GND ≤ V _{IN} ≤ V _{CC}	- 10	+10	- 10	+10	µA	
V _{CD}	Input Diode Clamp Voltage		Note 4					
I _{OZ}	Output Leakage Current	V _{OL} ≤ V _{OUT} ≤ V _{OH} , Output Disabled	- 40	+40	- 40	+40	µA	
I _{OS}	Output Short Circuit Current ^[5]	V _{CC} = Max., V _{OUT} = GND	- 20	- 90	- 20	- 90	mA	
I _{CC}	Power Supply Current	V _{CC} = Max., V _{IN} = 2.0V, I _{OUT} = 0 mA	Com'l		120		120	mA
			Mil				140	
I _{SB}	Standby Supply Current	Chip Enable Inactive, CE ≥ V _{IH} , I _{OUT} = 0 mA	Com'l		15		15	mA
			Mil				15	

Notes:

- Contact a Cypress representative regarding industrial temperature range specification.
- T_A is the "instant on" case temperature.
- See the last page of this specification for Group A subgroup testing information.
- See the "Introduction to CMOS PROMs" section of the Cypress Data Book for general information on testing.
- For test purposes, not more than one output at a time should be shorted. Short circuit test duration should not exceed 30 seconds.

Electrical Characteristics Over the Operating Range^[3, 4](continued)

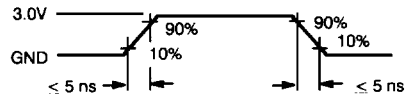
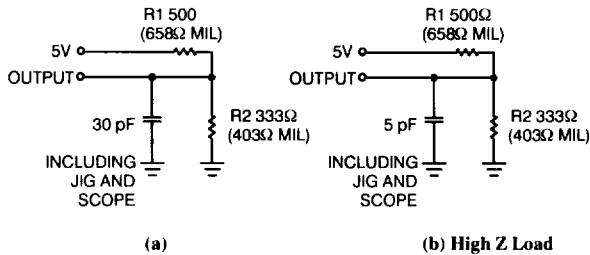
Parameter	Description	Test Conditions	7C266-35		7C266-45		7C266-55		Units	
			Min.	Max.	Min.	Max.	Min.	Max.		
V _{OH}	Output HIGH Voltage	V _{CC} = Min., I _{OH} = - 4.0 mA	2.4		2.4		2.4		V	
V _{OL}	Output LOW Voltage	V _{CC} = Min., I _{OL} = 16.0 mA		0.4		0.4		0.4	V	
V _{IH}	Input HIGH Voltage		2.0		2.0		2.0		V	
V _{IL}	Input LOW Voltage			0.8		0.8		0.8	V	
I _{IX}	Input Current	GND ≤ V _{IN} ≤ V _{CC}	- 10	+ 10	- 10	+ 10	- 10	+ 10	μA	
V _{CD}	Input Diode Clamp Voltage		Note 4							
I _{OZ}	Output Leakage Current	V _{OL} ≤ V _{OUT} ≤ V _{OH} , Output Disabled	- 10	+ 10	- 10	+ 10	- 10	+ 10	μA	
I _{OS}	Output Short Circuit Current ^[5]	V _{CC} = Max., V _{OUT} = GND	- 20	- 90	- 20	- 90	- 20	- 90	mA	
I _{CC}	Power Supply Current	V _{CC} = Max., V _{IN} = 2.0V, I _{OUT} = 0 mA	Com'1		100		100		100	mA
			Mil				120		120	
I _{SB}	Standby Supply Current	Chip Enable Inactive, CE ≥ V _{IH} , I _{OUT} = 0 mA	Com'1		15		15		15	mA
			Mil				15		15	

Capacitance^[4]

Parameters	Description	Test Conditions	Max.	Units
C _{IN}	Input Capacitance	T _A = 25°C, f = 1 MHz, V _{CC} = 5.0V	10	pF
C _{OUT}	Output Capacitance		10	pF

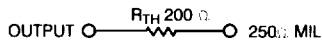
AC Test Loads and Waveforms

Test Load for -20 through -25 speeds

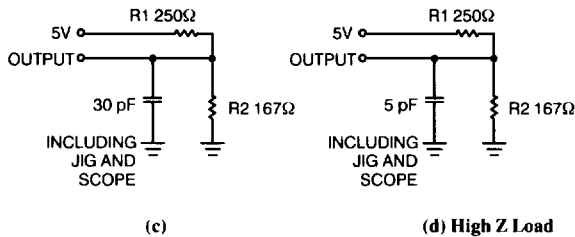


C266-5

Equivalent to: THEVENIN EQUIVALENT

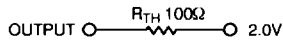


Test Load for -35 through -55 speeds



C266-6

Equivalent to: THEVENIN EQUIVALENT



Switching Characteristics Over the Operating Range^[1, 2, 4]

Parameters	Description	7C266-20		7C266-25		7C266-35		7C266-45		7C266-55		Units
		Min.	Max.	Min.	Max.	Min.	Max.	Min.	Max.	Min.	Max.	
t_{AA}	Address to Output Valid		20		25		35		45		55	ns
t_{HZCE}	Chip Enable Inactive to High Z		25		30		40		45		55	ns
t_{HZOE}	Output Enable Inactive to High Z		12		15		20		25		25	ns
t_{AOE}	Output Enable Active to Output Valid		12		15		20		25		25	ns
t_{ACE}	Chip Enable Active to Output Valid		25		30		40		45		55	ns
t_{OHA}	Data Hold from Address Change	3		3		3		3		3		ns
t_{PU}	Chip Enable Active to Power-Up		25		30		40		45		55	ns
t_{PD}	Chip Enable Inactive to Power-Down		25		30		40		45		55	ns

Erase Characteristics

Wavelengths of light less than 4000 angstroms begin to erase the devices in the windowed package. For this reason, an opaque label should be placed over the window if the EPROM is exposed to sunlight or fluorescent lighting for extended periods of time.

The recommended dose of ultraviolet light for erasure is a wavelength of 2537 angstroms for a minimum dose (UV intensity multiplied by exposure time) or 25 Wsec/cm². For an ultraviolet lamp with a 12 mW/cm² power rating, the exposure time would be approximately 35 minutes. The CY7C266 needs to be within 1 inch of the lamp during erasure. Permanent damage may result if the

EPROM is exposed to high-intensity UV light for an extended period of time.

7258 Wsec/cm² is the recommended maximum dosage.

Programming Modes

Programming support is available from Cypress as well as from a number of third party software vendors. For detailed programming information, including a listing of software packages, please see the PROM Programming Information located at the end of this section. Programming algorithms can be obtained from any Cypress representative.

Table 1. Mode Selection

Mode	Pin Function ^(6,7)								
	Normal Operation	A ₈	A ₉	A ₁₀	A ₁₁	A ₁₂	CE	OE	D ₇ - D ₀
	Program	VFY	PGM	LAT	NA	NA	CE	V _{PP}	D ₇ - D ₀
Read		A ₈	A ₉	A ₁₀	A ₁₁	A ₁₂	V _{IL}	V _{IL}	O ₇ - O ₀
Standby		X	X	X	X	X	V _{IH}	X	Tri-Stated
Output Disable		A ₈	A ₉	A ₁₀	A ₁₁	A ₁₂	V _{IL}	V _{IH}	Tri-Stated
Program		V _{IHP}	V _{ILP}	V _{ILP}	V _{ILP}	V _{ILP}	V _{ILP}	V _{PP}	D ₇ - D ₀
Program Verify		V _{ILP}	V _{IHP}	V _{ILP}	V _{ILP}	V _{ILP}	V _{ILP}	V _{PP}	O ₇ - O ₀
Program Inhibit		V _{IHP}	V _{IHP}	V _{ILP}	V _{ILP}	V _{ILP}	V _{ILP}	V _{PP}	Tri-Stated
Blank Check		V _{ILP}	V _{IHP}	V _{ILP}	V _{ILP}	V _{ILP}	V _{ILP}	V _{PP}	O ₇ - O ₀

Notes:

6. X = "don't care" but must not exceed V_{CC} + 5%.

7. Address A₈ - A₁₂ must be latched through lines A₀ - A₄ in Programming modes.

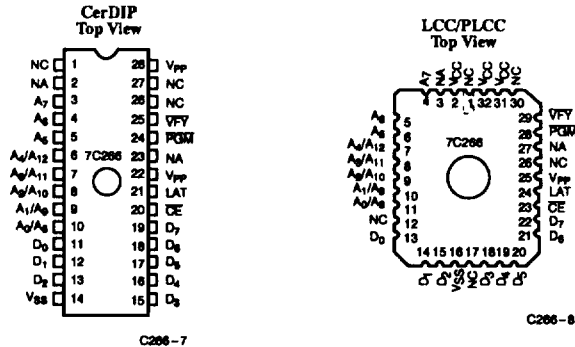
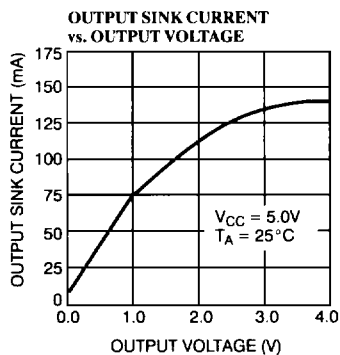
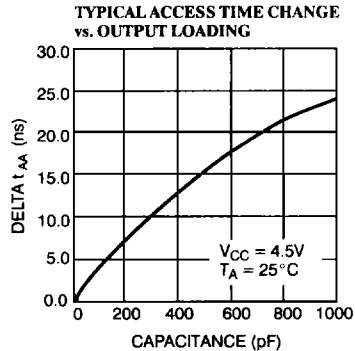
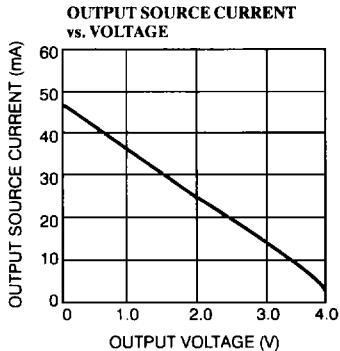
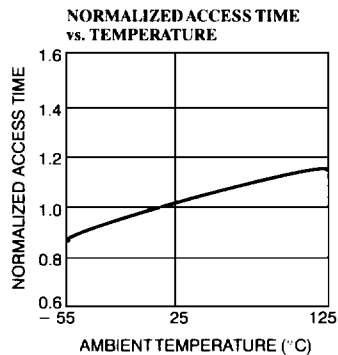
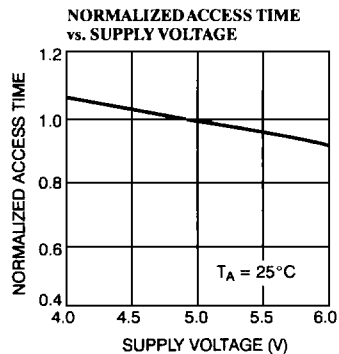
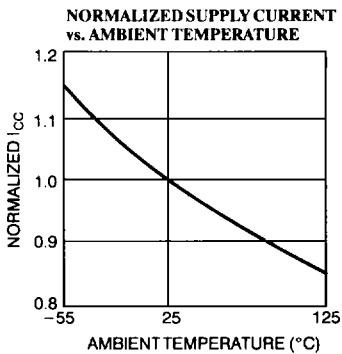
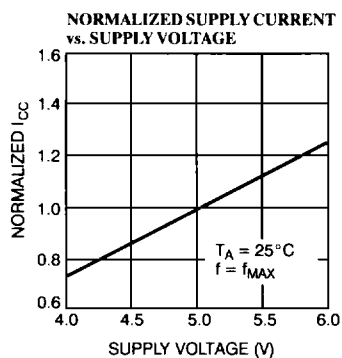


Figure 1. Programming Pinout

Typical DC and AC Characteristics



Ordering Information^[8]

Speed (ns)	Ordering Code	Package Type	Operating Range
20	CY7C266-20DC	D16	Commercial
	CY7C266-20PC	P15	
	CY7C266-20WC	W16	
25	CY7C266-25DC	D16	Commercial
	CY7C266-25PC	P15	
	CY7C266-25WC	W16	
	CY7C266-25DMB	D16	Military
	CY7C266-25LMB	L55	
	CY7C266-25QMB	Q55	
	CY7C266-25WMB	W16	
35	CY7C266-35DC	D16	Commercial
	CY7C266-35PC	P15	
	CY7C266-35WC	W16	
45	CY7C266-45DC	D16	Commercial
	CY7C266-45PC	P15	
	CY7C266-45WC	W16	
	CY7C266-45DMB	D16	Military
	CY7C266-45LMB	L55	
	CY7C266-45QMB	Q55	
	CY7C266-45WMB	W16	
55	CY7C266-55DC	D16	Commercial
	CY7C266-55PC	P15	
	CY7C266-55WC	W16	
	CY7C266-55DMB	D16	Military
	CY7C266-55LMB	L55	
	CY7C266-55QMB	Q55	
	CY7C266-55WMB	W16	

Notes:

8. Most of these products are available in industrial temperature range. Contact a Cypress representative for specifications and product availability.

MILITARY SPECIFICATIONS
Group A Subgroup Testing
DC Characteristics

Parameters	Subgroups
V _{OH}	1, 2, 3
V _{OL}	1, 2, 3
V _{IH}	1, 2, 3
V _{IL}	1, 2, 3
I _{Ix}	1, 2, 3
I _{OZ}	1, 2, 3
I _{CC}	1, 2, 3
I _{SB}	1, 2, 3

Switching Characteristics

Parameters	Subgroups
t _{AA}	7, 8, 9, 10, 11
t _{AOE}	7, 8, 9, 10, 11
t _{ACE}	7, 8, 9, 10, 11

Document #: 38-00086-C