

REVISION N

DO NOT SCALE FROM THIS PRINT

UNLESS OTHERWISE NOTED		TITLE:	DWG NO:
DIMENSIONS ARE IN INCHES		.100 x .100	TSSH-1XX-01-XXX-XX-X
TOLERANCES ARE:		TERMINAL STRIP w/	
ONE PLACE DECIMALS ±.1[2.5]	THREE PLACE DECIMALS ±.005 [.13]	MOLDED IN END SHROUDS	SHEET 1 OF 2
TWO PLACE DECIMALS ±.01[.3]	FOUR PLACE DECIMALS ±.002 [.05]		
		ANGLES ± 2°	

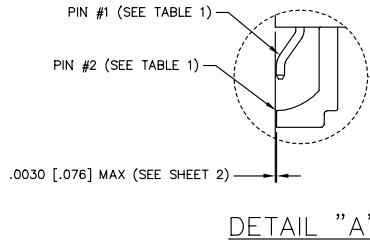
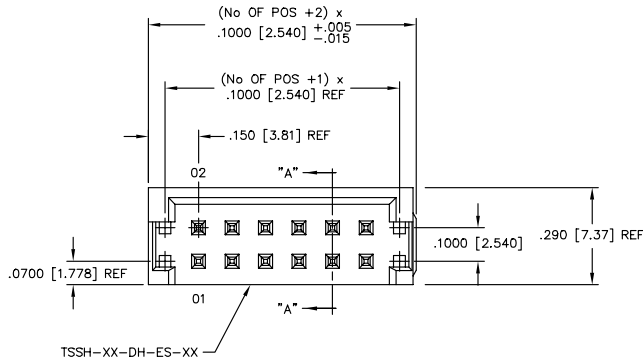
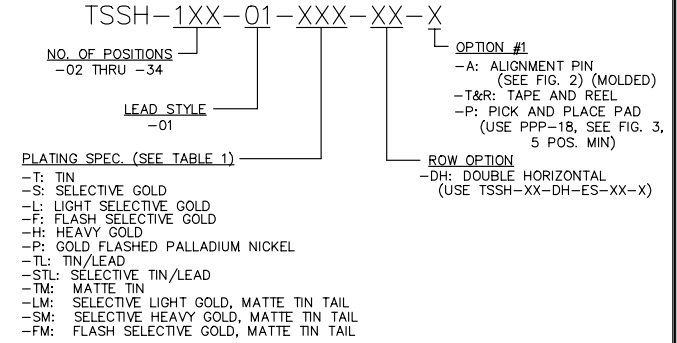
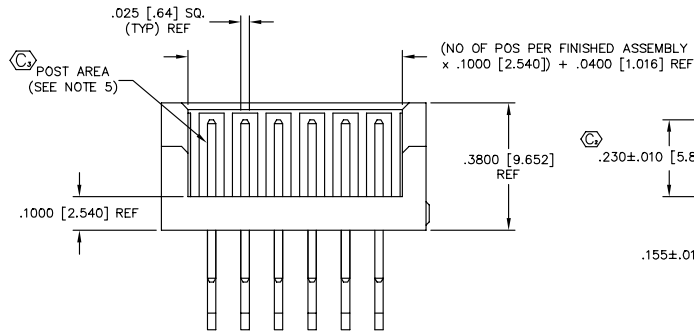


FIG. 1



- NOTES:
1. (C) REPRESENTS A CRITICAL DIMENSION.
  2. SEE SHEET 2 FOR FLUSH SPECS.
  3. MAX FLASH ALLOWED: .010 [.25].
  4. PUSHOUT FORCE: 1.5 LB. MINIMUM.
  5. NO BANDOLIER MARKS ARE ALLOWED IN THE POST AREA.



SECTION "A-A" (ROTATED 90°)

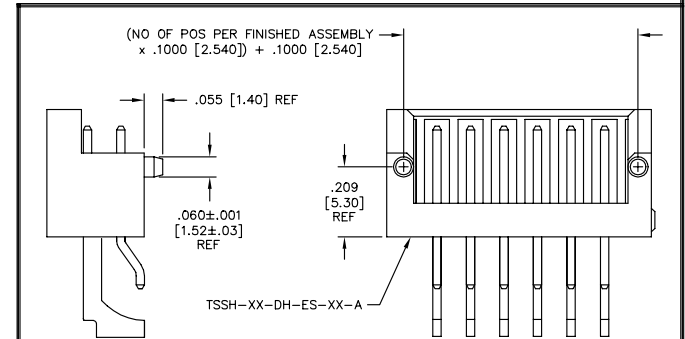


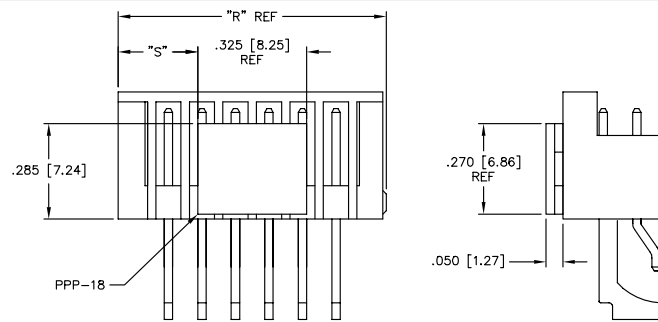
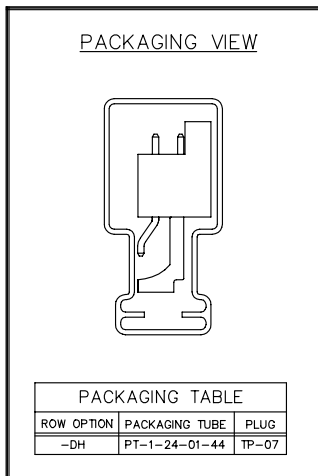
FIG. 2

-A: ALIGNMENT PIN OPTION

FIG. 3  
-P: PICK AND PLACE PAD OPTION (USE PPP-18, 5 POS. MIN)

PLATING STYLE	LEAD STYLE	ROW OPTION	PIN #1	PIN #2	
				'A'	'B'
-T	-01	-DH	T-1S6-22-T-2	T-1S35-01-T-2	T-1S35-02-T-2
-STL	-01	-DH	T-1S6-22-STL-2	T-1S35-01-STL-2	T-1S35-02-STL-2
-LM	-01	-DH	T-1S6-22-L-2	T-1S35-01-L-2	T-1S35-02-L-2

FOR OTHER PLATING OPTIONS REFER TO T-1S6-XX-XXX-2, AND T-1S35-XX-XXX-2 COMPONENT DRAWINGS



FOR ODD # POSITION FG: "R" = (No. OF POS + 2) x .100 [2.54]  
"S" = {"R" - .325 [8.26]} / 2 ± .020 [.51]

FOR EVEN # POSITION FG: "R" = (No. OF POS + 1) x .100 [2.54]  
"S" = {"R" - .325 [8.26]} / 2 ± .020 [.51]

PLOT SCALE: 1=3/DIMSCALE: 1=2

**samtec**

520 PARK EAST BLVD. NEW ALBANY, INDIANA 47150  
PHONE (812) 944-6733 P.O. BOX 1147  
CODE 55322

MADE BY: BURREN 10-10-98

TSSH-1XX-01-XXX-XX-X  
SHEET 1 OF 2

**PROPRIETARY NOTE**  
THIS DOCUMENT CONTAINS INFORMATION CONFIDENTIAL AND PROPRIETARY TO SAMTEC INC. AND SHALL NOT BE REPRODUCED OR TRANSMITTED IN ANY FORM OR BY ANY MEANS, ELECTRONIC OR MECHANICAL, INCLUDING PHOTOCOPYING, RECORDING, OR BY ANY INFORMATION STORAGE AND RETRIEVAL SYSTEM, WITHOUT THE EXPRESS WRITTEN CONSENT OF SAMTEC INC.