

# MICRO SWITCH

FREEPORT ILLINOIS, U.S.A.  
A DIVISION OF HONEYWELL INC.  
FED. MFG. CODE 91929

# SWITCH-BASIC

CATALOG LISTING

## 14ISM28-H2

PRODUCT CODE  
TYS0285

M 14ISM28-H2

DRAWING NUMBER

ISSUE

3

REPLACES X89535-SM  
RELEASE NO. PR-16778

REVISIONS

A	CO7962	23OCT07
S A D 15 APR 95		
B	0034827	23OCT07
BS		

PSR

CHECK

CHECK

CHECK

CHECK

CHECK

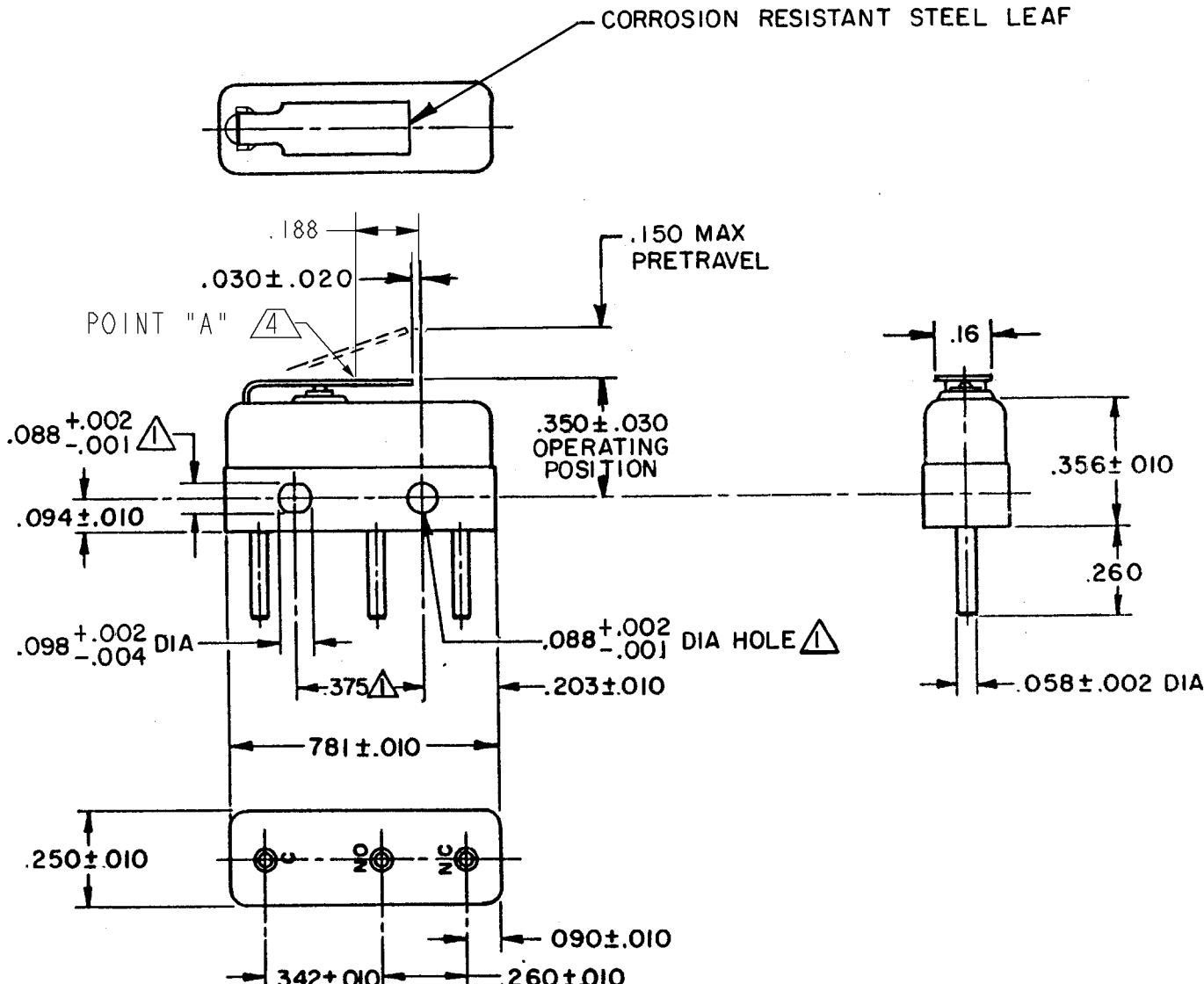
CHECK

CHECK

CHECK

CHECK

CHECK



NOTES

- 1 MOUNTING HOLES WILL ACCEPT PINS OR SCREWS OF .087 MAX DIA ON .375 ± .002 CENTERS
- 2 - TERMINALS ARE PLATED FOR SOLDERING
- 3 - SWITCH WILL WITHSTAND TEMPERATURE OF 250°F
- 4 CHARACTERISTICS TAKEN AT POINT "A"
- 5 CUSTOMER'S TARGET DIFF TRAVEL RANGE AT POINT "A" ON LEAF IS 0.003-0.007
- 6 - CORRESPONDS TO NASON PART NUMBER SM-1214

THIS DRAWING COVERS A PROPRIETARY ITEM AND IS THE PROPERTY OF MICRO SWITCH, A DIVISION OF HONEYWELL. THIS DRAWING IS NOT TO BE COPIED OR USED WITHOUT THE APPROVAL OF MICRO SWITCH.

THIRD ANGLE PROJECTION

CHARACTERISTICS	4
OPERATING FORCE	14 OZ MAX
RELEASE FORCE	2 OZ MIN
DIFFERENTIAL TRAVEL	5 -- .020 MAX
OVERTRAVEL	.011 MIN

ELECTRICAL DATA									
CONTACT ARRANGEMENT S P D T									
APPROVALS	<table border="0"> <tr> <td>KEMA, CE</td> <td>11A 250 V ~ T85 1E4 5A 30 Vdc T85 1E4</td> <td></td> <td></td> </tr> <tr> <td>UL, CSA</td> <td>11A 1/4 HP 125 250 VAC 5A 30 VDC</td> <td></td> <td>BRAND L190</td> </tr> </table>	KEMA, CE	11A 250 V ~ T85 1E4 5A 30 Vdc T85 1E4			UL, CSA	11A 1/4 HP 125 250 VAC 5A 30 VDC		BRAND L190
KEMA, CE	11A 250 V ~ T85 1E4 5A 30 Vdc T85 1E4								
UL, CSA	11A 1/4 HP 125 250 VAC 5A 30 VDC		BRAND L190						

SCALE	DO NOT SCALE PRINT
2:1	UNLESS OTHERWISE SPECIFIED TOLERANCES ARE
	ONE PLACE (.0) ± .030
	TWO PLACE (.00) ± .015
	THREE PLACE (.000) ± .005
	ANGLES ±

WEIGHT .006 LB MAX

RASTER

FO-52848-B

DRAWN

J A S 28 SEPT 88

CHECK

CHECK

CHECK

CHECK

CHECK

CHECK

CHECK

CHECK

CHECK

CHECK

CHECK

CHECK

CHECK

CHECK

CHECK

CHECK

CHECK

CHECK

CHECK

CHECK

CHECK

CHECK

CHECK

CHECK

CHECK

CHECK

CHECK

CHECK

CHECK

CHECK

CHECK

CHECK

CHECK

CHECK

CHECK

CHECK

CHECK

CHECK

CHECK

CHECK

CHECK

CHECK

CHECK