

6

5

4

3



2

1

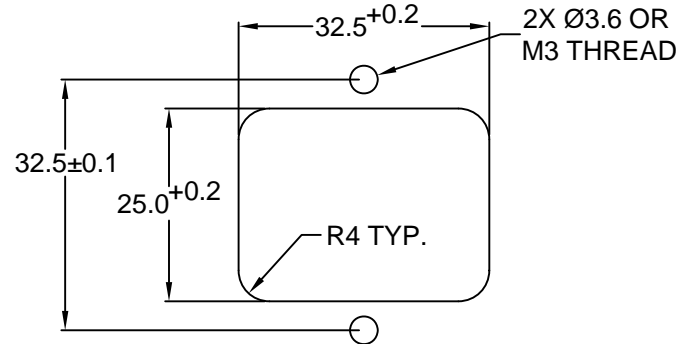
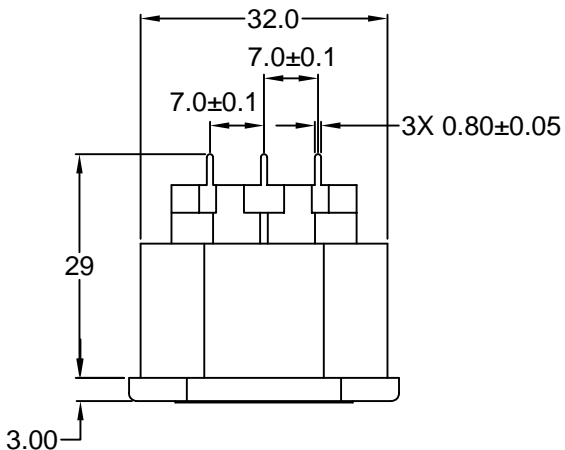
MATERIAL AND FINISH:
 Insulator: Polycarbonate, UL-94V-0 rated
 Contacts: Brass, Tin Plated

ELECTRICAL SPECIFICATIONS:

Current rating: 10 A 

Current rating: 15 A 
 Voltage rating: 250 VAC 

Insulation resistance: 100 Mohm min. at 500 VDC
 Dielectric withstanding voltage: 2000 VAC for one minute

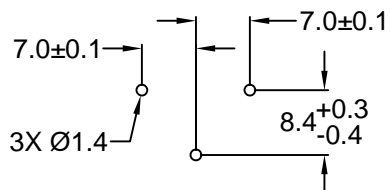
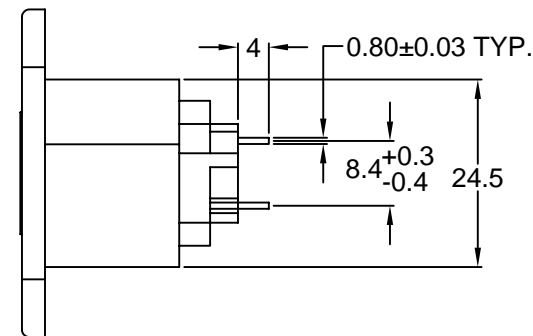
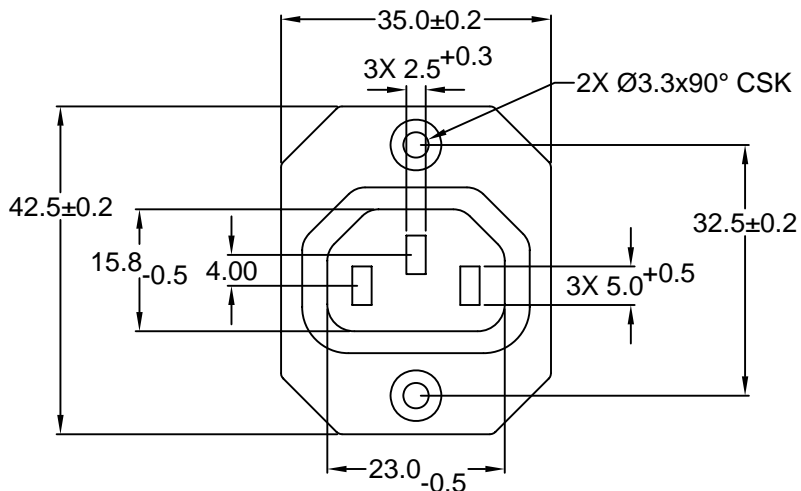


**RECOMMENDED
 PANEL CUTOUT**

ORDERING CODE:

43R09-2 _ 3 2
 1

- 1) COLOR
 1 = BLACK
 2 = GRAY



**RECOMMENDED
 PCB LAYOUT**

**RoHS
 COMPLIANT**

TOLERANCE UNLESS OTHERWISE SPECIFIED	
X	± 1
X.X	± 0.4
X.XX	± 0.20

Power Dynamics, Inc.
 Phone: 973 560-0019 Whippany, New Jersey Fax: 973 560-0076

PART: 10A/15A IEC 60320 APPL. OUTLET; STRAIGHT
 PC TERMINALS; CROSS FLANGE, PANEL MOUNT

DRAWN BY	GQ	DATE:	10/09/01
CHECK BY	TD	DATE:	10/11/01
APPR BY	PB	DATE:	10/11/01

PART #: 43R09-2X32		SHEET	1 of 1
SIZE: A	ALL DIMENSIONS FOR REFERENCE ONLY		REV:
SCALE: NTS	DIMENSIONS ARE IN MILLIMETERS		

D

C

B

A

REV	DATE	CHNG	CHK	APPR