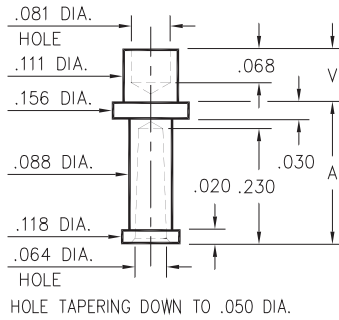


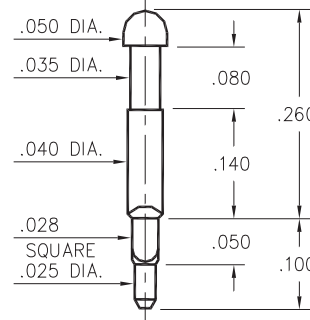
**2709**



- X -	Board Thickness	Length V	Length A
2	.062	.109	.281
3	.094	.141	.250

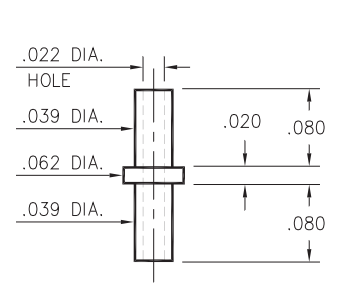
**2709-X-07-XX-00-00-07-0**  
Swage mount in .116 hole

**8602**



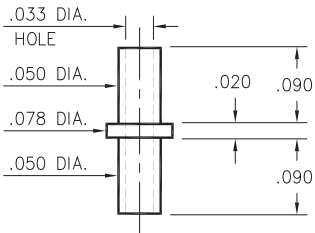
**8602-1-00-XX-00-00-07-0**  
Square press-fit in .032 plated thru hole

**2115**



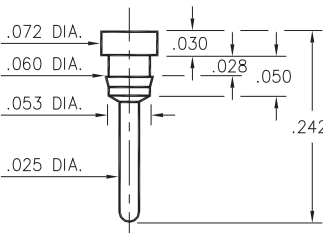
**2115-2-00-XX-00-00-07-0**  
Swage mount in .043 hole For .062 thick board

**2326**



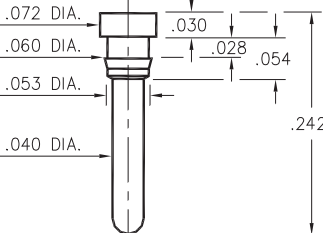
**2326-2-00-XX-00-00-07-0**  
Swage mount in .055 hole for .062 thick board

**8831**



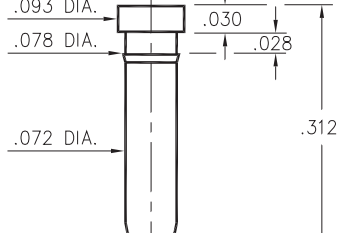
**8831-0-00-XX-00-00-03-0**  
Press-fit in .057 mounting hole

**8835**



**8835-0-00-XX-00-00-03-0**  
Press-fit in .057 mounting hole

**8836**



**8836-0-00-XX-00-00-03-0**  
Press-fit in .075 mounting hole

**SPECIFICATIONS**

**PIN MATERIAL:**  
Brass Alloy 360, 1/2 Hard  
Swage pins are annealed

**DIMENSION IN INCHES**  
**TOLERANCES ON:**  
LENGTHS: ±.005  
DIAMETERS: ±.002  
ANGLES: ± 2°

**ORDER CODE: XXXX - X - XX - XX - 00 - 00 - XX - 0**

**BASIC PART #**

**SPECIFY PIN FINISH:**

- 01 200μ" TIN/LEAD OVER NICKEL
- ◇ 80 200μ" TIN OVER NICKEL (RoHS)
- ◇ 44 300μ" SILVER OVER COPPER (RoHS)
- ◇ 50 300μ" ELECTRO-SOLDER (RoHS) (60/40 SnPb)

