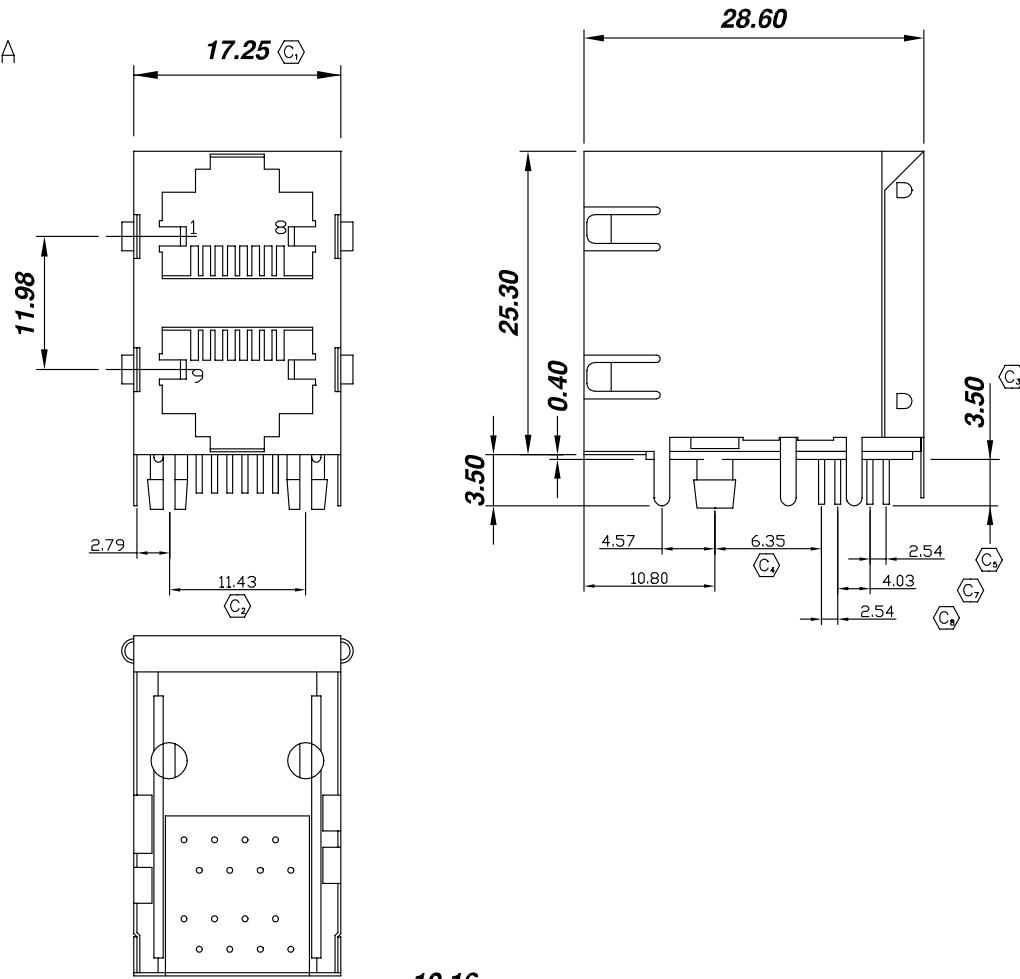


REVISION A



MODM-B-2-8P8C-X-S

TYPE -B

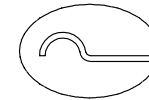
PORTS -2

POSITIONS/CONTACTS -8P8C: 8 Pos/8 Con

SHIELD -S

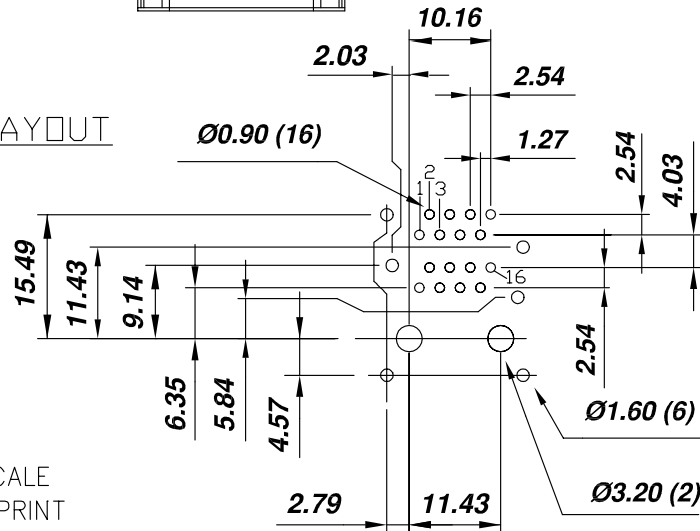
PLATING

-L: .000015" Au
 -S: .000030" Au
 -E: .000050" Au



PANEL GROUND MODE

PCB LAYOUT



DO NOT SCALE FROM THIS PRINT

NOTES:

1. C REPRESENTS A CRITICAL DIMENSION
2. GOLD PLATING ON MATING AREA, TIN-LEAD ON TAILS

UNLESS OTHERWISE SPECIFIED, DIMENSIONS ARE IN MM. TOLERANCES ARE:

DECIMALS ANGLES
 X.XX±0.25 ±3
 X.XXX±0.13
 X.XXXX±0.05

PROPRIETARY NOTE
 THIS DOCUMENT CONTAINS INFORMATION CONFIDENTIAL AND PROPRIETARY TO SAMTEC INC. AND SHALL NOT BE REPRODUCED OR TRANSFERRED TO OTHER DOCUMENTS OR DISCLOSED TO OTHERS OR USED FOR ANY PURPOSE OTHER THAN THAT FOR WHICH IT WAS OBTAINED WITHOUT THE EXPRESSED WRITTEN CONSENT OF SAMTEC INC.



520 PARK EAST BLVD. NEW ALBANY, IN 47150
 (812) 944-6733 P.O. BOX 1147 TWX: 810-540-4085

CODE: 55322

DO NOT SCALE DRAWING SHEET SCALE: 1:2
 INSULATOR: PBT 20% Glass Filled (UL 94V-0) Black
 CONTACT : Phosphor Bronze
 SHELL : Copper Alloy
 MAX FLASH ALLOWED: .051
 MAX GATE VESTIGE: .051
 F:\DWG\misc\mktg

DESCRIPTION:
 RJ45 2x1 8 Position Double Deck Gang PCB Jack
 DWG. NO.
 MODM-B-2-8P8C-X-S
 BY: J. RILEY 10/31/2003 SHEET 1 OF 1