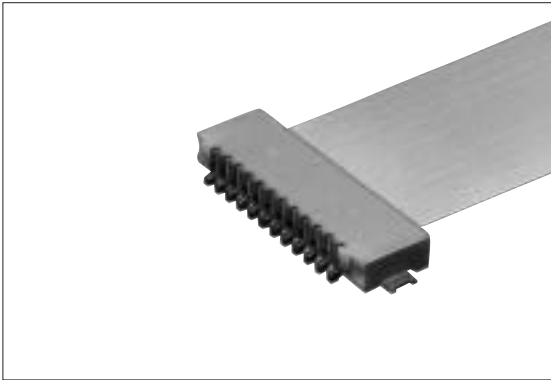
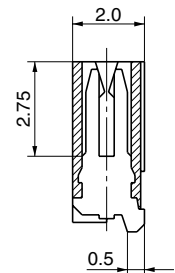
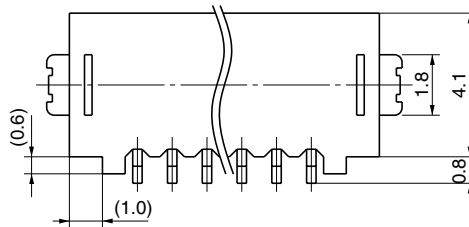
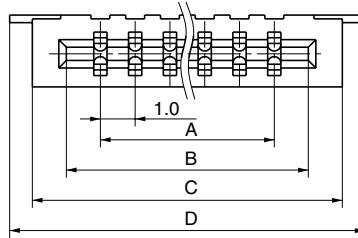


FPC Connector

FF-10 LP Series 1.0mm Spacing (SMT)



● CFP02□□-0101F
 ↑
 No. of Pins



■ Features

1. The FFC connectors in this series apply to the 1.0 mm spacing SMT.
2. The connector of dual contact structure 2.0 mm high above the board.
3. Supplied in emboss-tape packaging for automatic mounting.
4. A lead-free product.

■ Specifications

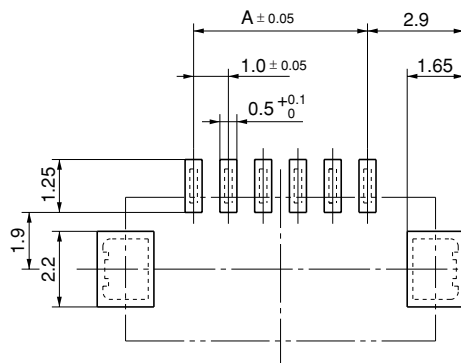
1. Rating : 0.5A, 50V AC/DC
2. Contact Resistance : 30 mΩ, max.
3. Insulation Resistance : 1000 MΩ, min. at 500V DC
4. Withstanding Voltage : 500V AC for one minute
5. Operating Temperature Range : -25°C to +85°C

■ Material and Plating

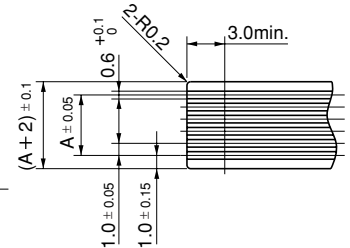
- Housing : Polyphenylene Sulfide (PPS), Natural Color, 94V-0
- Contact : Phosphor Bronze, Tin Plating
- Frame : Phosphor Bronze, Tin Plating

□□	No. of Pins	A	B	C	D
05	5	4.0	6.1	8.0	9.4
06	6	5.0	7.1	9.0	10.4
07	7	6.0	8.1	10.0	11.4
11	11	10.0	12.1	14.0	15.4
12	12	11.0	13.1	15.0	16.4
15	15	14.0	16.1	18.0	19.4

■ P.C. Board Dimension



■ Applicable FPC/FFC Dimension (t=0.3±0.05)



- FPC plating to recommend : Tin plating