

SPECIFICATIONS

ISA Connector

Mechanical

Contact Retention Force: 6.80kgf min.
Mating Force: 340gf max. per Contact Pair
Unmating Force: 28gf min. per Contact Pair
Durability: 500 Cycles

EW Series

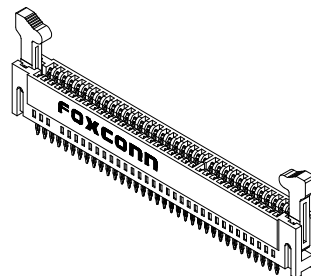
Vertical Type, Press Fit
2.54mm [.100"] Pitch
70 Pos.

Electrical

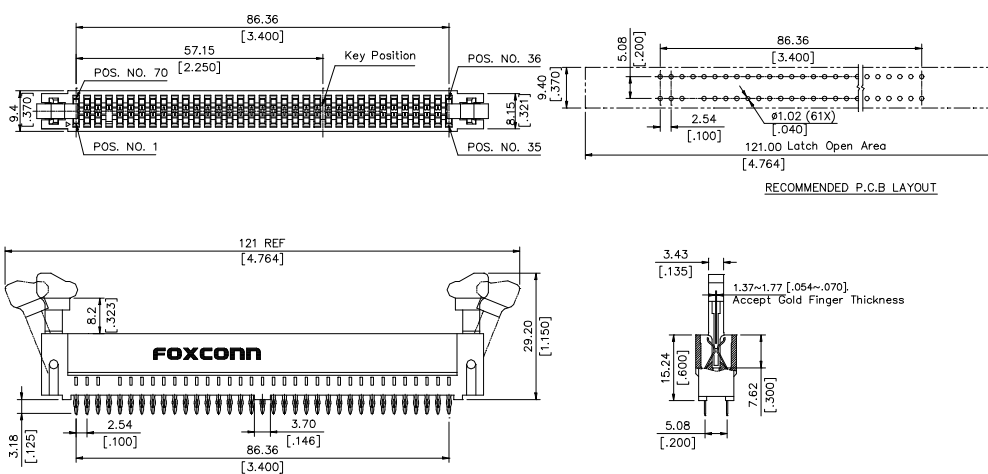
Current Rating: 3A max.
Current Voltage: 250V
Contact Resistance: 15mW max. initial
Dielectric Withstanding Voltage: 1000V
Insulation Resistance: 5000MW min.

Physical

Housing: Thermoplastic, UL 94V-0 rated, in Black Color
Contact: Copper alloy
Hook: Phosphor Bronze
Plating: See "ORDERING INFORMATION"
Operating Temperature: -55 to +85



DRAWING



ORDERING INFORMATION

PRODUCT NO.: EW 9 3 5 0 * - C9 - **

Series Prefix	EW	9	3	5	0	*	-	C9	-	**
Termination Type		9=Press Fit Type								
No. of Pos.			35=70 Pos.							
Tail Length Type					0=3.18 [0.125]					
Plating Type										DN=Tin/Lead DF=Lead Free
Extension Code										
Contact Area Plating										1=Gold Flash 2=20u" Gold 3=30u" Gold 6=10u" Gold 7=15u" Gold

All specification & dimensions are subject to change, please call your nearest Foxconn sales representative for update information.