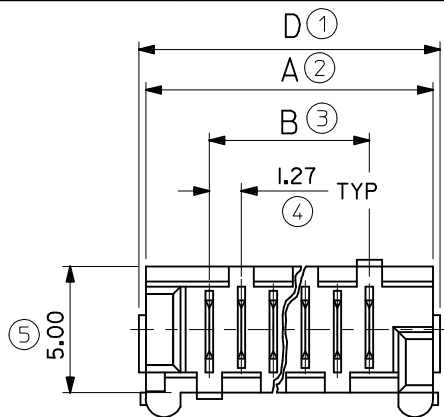
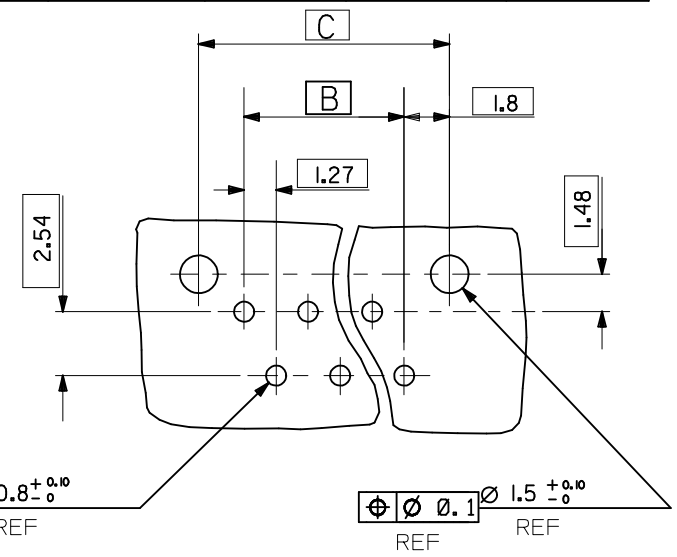
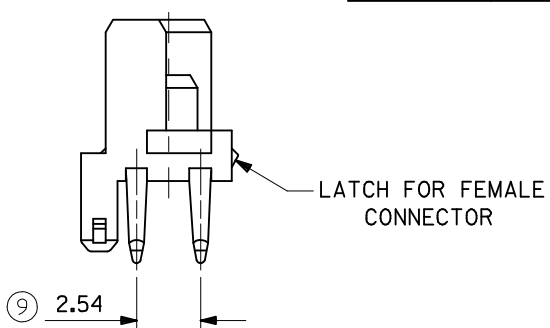
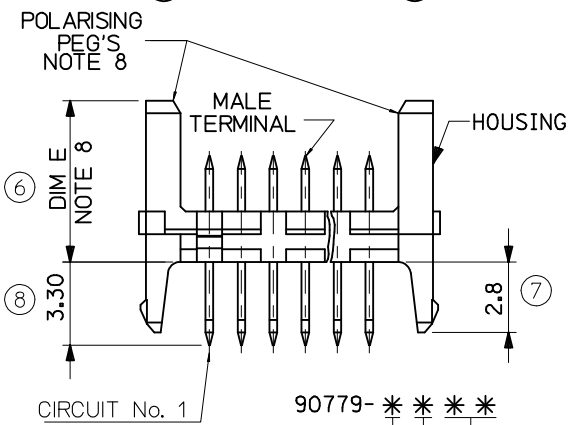


90779-***13	26	36.80	31.75	35.35	37.26
↑ ***12	24	34.26	29.21	32.81	34.72
***11	22	31.72	26.67	30.27	32.18
***10	20	29.18	24.13	27.73	29.64
***08	18	26.64	21.59	25.19	27.10
***07	16	24.10	19.05	22.65	24.56
***06	14	21.56	16.51	20.11	22.02
***05	12	19.02	13.97	17.57	19.48
***04	10	16.48	11.43	15.03	16.94
***03	8	13.94	8.89	12.49	14.40
↓ ***02	6	11.40	6.35	9.95	11.86
90779-***01	4	8.86	3.81	7.41	9.32
PART NO.	NO. OF CKTS	DIM. A	DIM. B	DIM. C	DIM. D



MOULD BASE COLOUR: NATURAL



PCB LAYOUT VIEWED FROM SOLDER SIDE. BOARD 1.60±0.14 THK

CIRCUIT No. 1 90779-***
 0 = 4-6µm TIN ASSY
 3 = 0.6µm PALLADIUM NICKEL ASSY
 7 = 0.6µm PALLADIUM NICKEL, TUBED
 9 = 4-6µm TIN ASSY TUBED
 0 - STANDARD
 9 - SHORT VERSION
 CIRCUIT SIZE 04CKT TO 26CKT -SEE TABLE ABOVE FOR PART CODE

- NOTES
- HOUSING, NYLON 46, GLASS FILLED UL 94 V-0, NATURAL (WHITE).
 - TERMINAL, BRASS
PLATING, TIN: 127 MICROMETRE MIN NICKEL UNDER 4-6 MICROMETRE TIN
PLATING PALLADIUM NICKEL (PdNi): 127 MICROMETRE MIN. NICKEL UNDER 3-5 MICROMETRE TIN SELECTIVE AND 0.6 MICROMETRE PdNi UNDER 0.05 MICROMETRE GOLD FLASH
 - APPLICATION CLASS TO DIN 40040 HME (-25°C/+100°C)
 - PIN PUSH FORCE 7N
 - TEST VOLTAGE: 750V.A.C./1 MIN
 - COMPATIBLE WITH MOLEX PART 90327
 - PRODUCT SPECIFICATION: PS-99020-0011
 - POLARISING PEG AVAILABLE IN 2 OPTIONS
DIM E: STANDARD 6.40mm
DIM E: SHORT VERSION 4.10mm
 - PACKAGING SPECIFICATION: PK-90325-002
- LAST INSPECTION NUMBER USED: 9

REMOVED GOLD OPTION ADDED PACKAGING SPEC EC NO: IPG2012-0576	DRW:DBYRMS 2012/03/22	QUALITY SYMBOLS
CHKD:SMCGREVV 2012/03/29	APPR:EFOLAN 2012/07/17	▽=0 ◻=0
DESCRIPTION		
REV		

GENERAL TOLERANCES (UNLESS SPECIFIED)
mm INCH
4 PLACES ± --- ± ---
3 PLACES ± 0.20 ± ---
2 PLACES ± 0.20 ± ---
1 PLACE ± --- ± ---
ANGULAR ± ---°
DRAFT WHERE APPLICABLE MUST REMAIN WITHIN DIMENSIONS

DIMENSION STYLE	SCALE	DESIGN UNITS
MM ONLY	5:1	METRIC
DRAWN BY	DATE	TITLE
BGB	1992/08/21	HEADER ASSEMBLY
CHECKED BY	DATE	
DMORIARTY	2004/12/03	
APPROVED BY	DATE	
JDENNEHY	2004/12/03	
MATERIAL NO.	DOCUMENT NO.	SHEET NO.
SEE CHART	SDA-90779	1 OF 1

THIRD ANGLE PROJECTION	
MOLEX INCORPORATED	
THIS DRAWING CONTAINS INFORMATION THAT IS PROPRIETARY TO MOLEX INCORPORATED AND SHOULD NOT BE USED WITHOUT WRITTEN PERMISSION	