

PLEASE CHECK WWW.MOLEX.COM FOR LATEST PART INFORMATION

Part Number: **0190030134**
Status: **Active**
Description: InsulKrimp™ Quick Disconnect, Female, Continuous Molded Strip, Tab 4.75mm (.187") x 0.51mm (.020")

Documents:

[Drawing \(PDF\)](#) [RoHS Certificate of Compliance \(PDF\)](#)
[Product Specification PS-19902-008 \(PDF\)](#)

Agency Certification

UL E79133

General

Product Family Quick Disconnects
 Series [19003](#)
 Comments Funnel Entry
 Crimp Quality Equipment Yes
 Product Name InsulKrimp™
 Type Quick Disconnect

Physical

Barrel Type Closed
 Color - Resin Natural
 Flammability 94V-0
 Gender Female
 Glow-Wire Compliant No
 Insulation Nylon (PA)
 Lock to Mating Part None
 Material - Metal Brass
 Material - Plating Mating Tin
 Material - Plating Termination Tin
 Material - Resin Nylon
 Orientation Straight
 Packaging Type Reel
 Plating min: Mating (µin) 160
 Plating min: Mating (µm) 4
 Plating min: Termination (µin) 160
 Plating min: Termination (µm) 4
 Polarized to Mating Part No
 Tab Thickness 0.51mm (.020")
 Tab Width 4.75mm (.187")
 Temperature Range - Operating -65°C to +105°C
 Termination Interface: Style Crimp or Compression
 Wire Size AWG 14, 16

Electrical

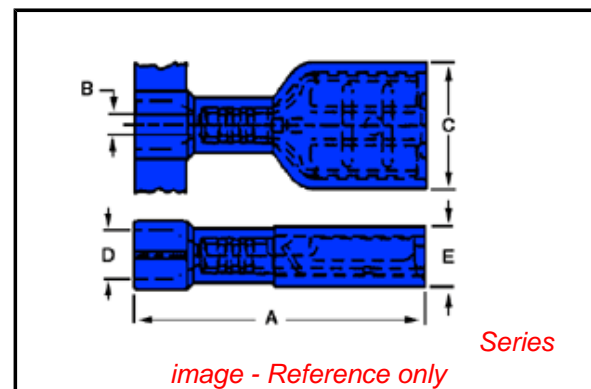
Voltage - Maximum 600V

Material Info

Old Part Number BB-2207VC

Reference - Drawing Numbers

Product Specification PS-19902-008
 Sales Drawing SD-19003-002



EU RoHS

ELV and RoHS Compliant
REACH SVHC
 Not Reviewed
Halogen-Free Status
 Not Reviewed

China RoHS



Need more information on product environmental compliance?

Email productcompliance@molex.com
 For a multiple part number RoHS Certificate of Compliance, [click here](#)

Please visit the [Contact Us](#) section for any non-product compliance questions.

Search Parts in this Series

[19003Series](#)

Application Tooling | FAQ

Tooling specifications and manuals are found by selecting the products below. Crimp Height Specifications are then contained in the Application Tooling Specification document.

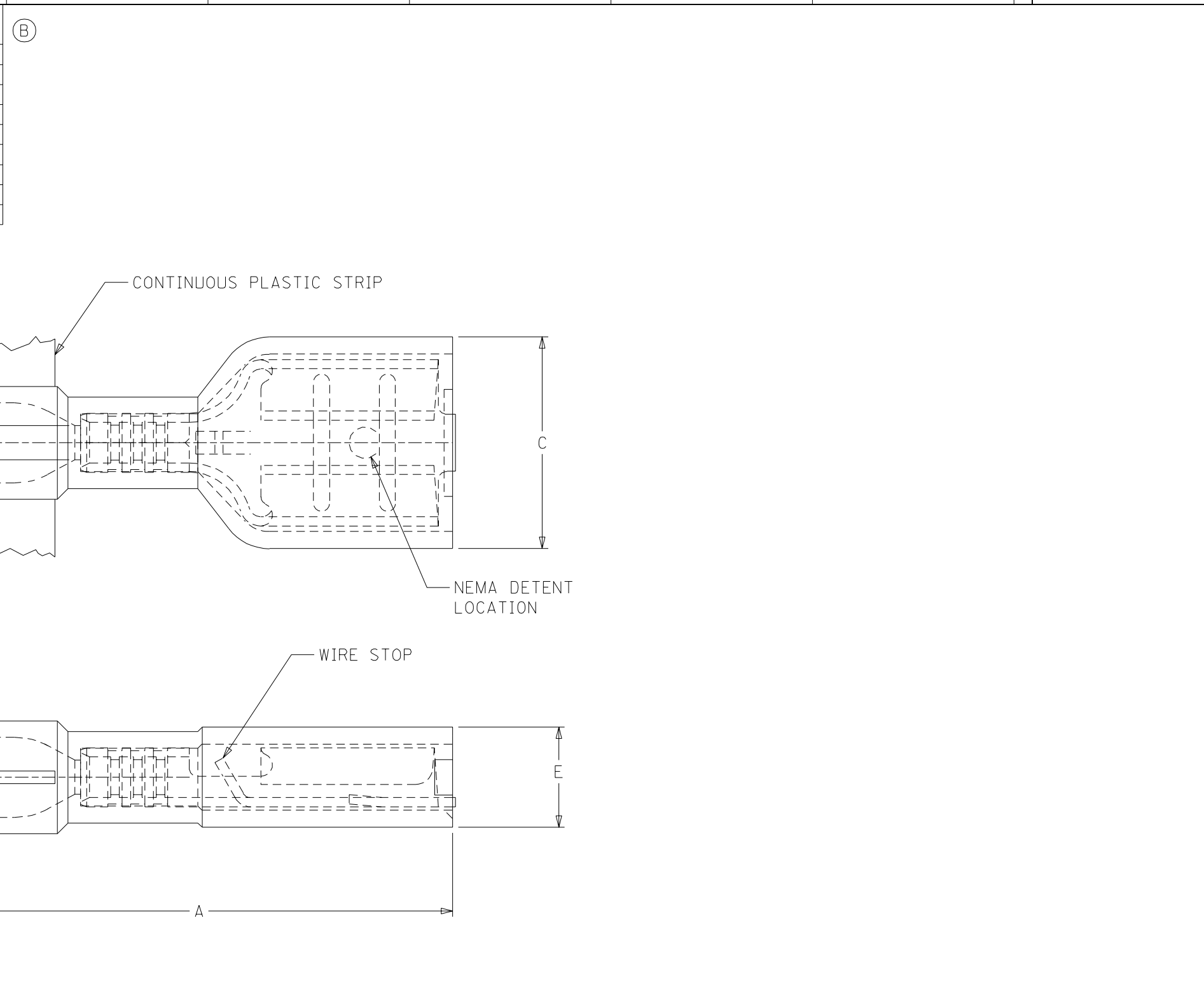
Global

Description	Product #
ACP Perishable Tool Kit used in ACP presses that process continuous molded product	0190280040
Mini-Mac™ Applicator	0638834200

This document was generated on 04/13/2010

PLEASE CHECK WWW.MOLEX.COM FOR LATEST PART INFORMATION

MATERIAL NUMBER	ENGINEERING NUMBER	FITS MALE TAB SIZE	"A" MAX.	"C" MAX.	"E" MAX.	CARRIER CONFIGURATION
190030132	BB-2207V	.187X.020	.78/19.8	.316/8.03	.170/4.32	LOOSE PIECE
190030133	BB-2207VT	.187X.020	.78/19.8	.316/8.03	.170/4.32	TAPE MOUNT
190030134	BB-2207VC	.187X.020	.78/19.8	.316/8.03	.170/4.32	PLASTIC STRIP
190030135	BB-2208V	.187X.032	.78/19.8	.316/8.03	.170/4.32	LOOSE PIECE
190030136	BB-2208VT	.187X.032	.78/19.8	.316/8.03	.170/4.32	TAPE MOUNT
190030137	BB-2208VC	.187X.032	.78/19.8	.316/8.03	.170/4.32	PLASTIC STRIP
190030044	BB-2206VB	.250X.032	.86/21.8	.380/9.65	.180/4.57	LOOSE PIECE
190030080	BB-2206VBT	.250X.032	.86/21.8	.380/9.65	.180/4.57	TAPE MOUNT
190030045	BB-2206VBC	.250X.032	.86/21.8	.380/9.65	.180/4.57	PLASTIC STRIP



SALES DRAWING

NOTES:
 (B) 1. MATERIAL: TERMINAL: BRASS .016/0.41
 PLATING: ELECTRO-TIN
 INSULATION: NYLON 6/6 94V-0 RATING
 COLOR: BLUE.
 2. MWID = MAXIMUM WIRE INSULATION DIAMETER
 3. ALL DIMENSIONS = INCHES/MM

REV'D NYLON COLOR EC NO. ETC2004-0101 DRWN: BRE 03/11/21 CHK: HEB 03/11/21 APPR: RWD 03/11/21	QUALITY SYMBOLS MAJOR $\nabla=0$ CRITICAL $\nabla C=0$	GENERAL TOLERANCES: (UNLESS SPECIFIED)		SCALE NO: NE	DESIGN UNITS <input type="checkbox"/> mm <input checked="" type="checkbox"/> INCH	THIRD ANGLE PROJECTION <input checked="" type="checkbox"/> mm <input type="checkbox"/> INCH	SHT	REV
		4 PLACES $\pm 0.---$	$\pm .---$	DRAWN BY & DATE HEB 01/06/07		TITLE: FIQD FEMALE, INSULKRIMP 94V-0 MATERIAL 16-14 AWG		
		3 PLACES $\pm 0.---$	$\pm .005$	CHECKED BY & DATE RWD 01/06/07		MOLEX INCORPORATED		
		2 PLACES ± 0.13	$\pm .01$	APPROVED BY & DATE RWD 01/06/07		CAD FILENAME S19003002.DGN	MATERIAL NO. SEE TABLE	DRAWING NO. SD-19003-002
		1 PLACE ± 0.25	$\pm .---$	ANGULAR: $\pm 1/2^\circ$		THIS DRAWING CONTAINS INFORMATION THAT IS PROPRIETARY TO MOLEX INCORPORATED AND SHOULD NOT BE USED WITHOUT WRITTEN PERMISSION.		SIZE B
B	REV	DRAFT WHERE APPLICABLE MUST REMAIN WITHIN DIMENSIONS						