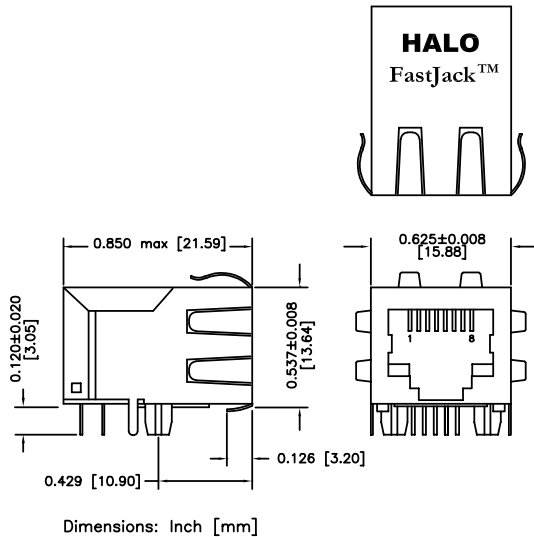


# HALO FastJack™ Single Port ELECTRONICS, INC. 10/100BASE-TX RJ-45 Connectors

HALO is pleased to offer this complete range of single port Integrated RJ-45 connectors. The FastJack™ series integrates the high performance of HALO magnetics into an industry standard connector design. The result is an extremely robust, IEEE802.3 compliant, solution. Single and multi-port FastJacks™ are available for most 10BASE-T and 10/100BASE-TX IC's.

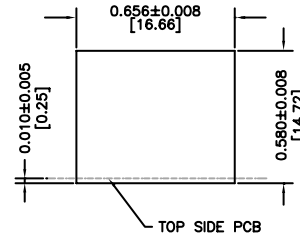


## Mechanical Drawing

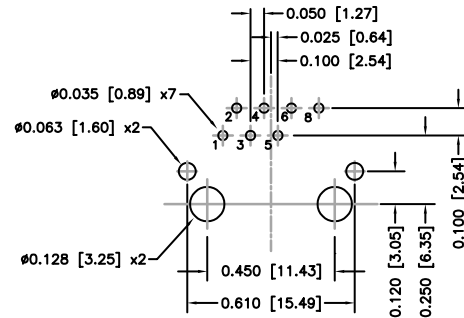


Transformer Electrical Specifications @25°C  
 Isolation: 1,500 Vrms  
 OCL @100KHz, 8mA: 350 μH min  
 CMR (0.1-100MHz): -40dB typ  
 Crosstalk (0.1-100MHz): -40dB min

## Recommended Panel Cut-out



## Recommended PCB Layout



(Pin 7 omitted except for HFJ11-LG1G)



RoHS compliant versions are available.  
 Specify RoHS compliant product by adding the suffix "RL".

## 10/100BASE-TX

FastJack™, Full Flexibility Schematics			Turns Ratio	
Circuit B	Circuit C	Circuit D	TX	RX
HFJ11-S050E	HFJ11-2250E	HFJ11-2450E	1:1	1:1
HFJ11-S120E	HFJ11-2220E	HFJ11-2420E	2:1	1:1
HFJ11-S141E	HFJ11-2241E	HFJ11-2441E	1:1.41	1:1
HFJ11-S131E	HFJ11-2231E	HFJ11-2431E	1.41:1	1:1
HFJ11-S139E	HFJ11-2239E	HFJ11-2439E	1.25:1	1:1

## High Frequency, CMR Chokes

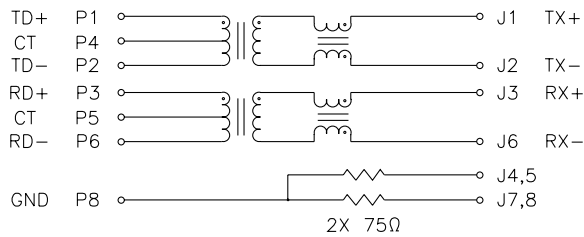
FastJack™ P/N	Circuit	Turns Ratio
HFJ11-LG1GE	E	1:1, 1:1, 1:1, 1:1

- LED options are also available. Please refer to the [LED option data sheet](#) for more information.
- Please see individual data sheets for complete electrical specifications.

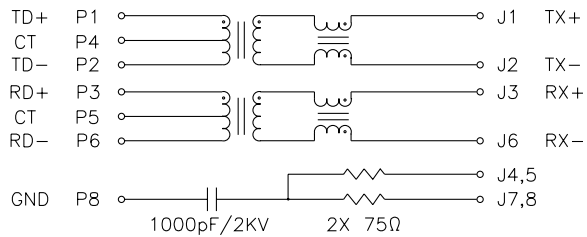
HALO is pleased to offer this complete range of single port Integrated RJ-45 connectors. The FastJack™ series integrates the high performance of HALO magnetics into an industry standard connector design. The result is an extremely robust, IEEE802.3 compliant, solution. Single and multi-port FastJacks™ are available for most 10BASE-T and 10/100BASE-TX IC's.



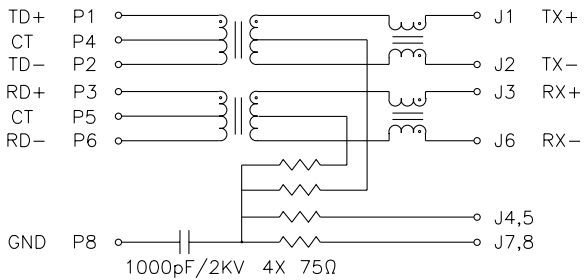
**Circuit B  
Low Cost 10/100BASE-TX**



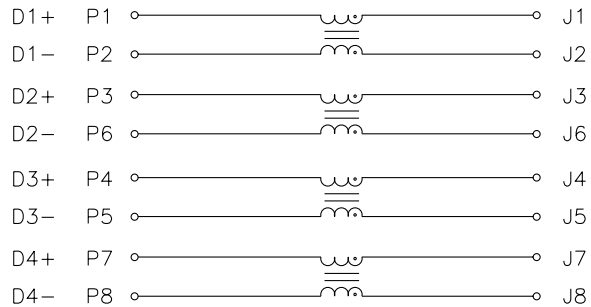
**Circuit C  
10/100 BASE-TX**



**Circuit D  
10/100BASE-TX**



**Circuit E  
CMR Chokes**



Please see individual data sheets for complete electrical specifications.

## 10BASE-T

Vendor	Silicon P / N	FastJack™ Part Number		
		Single	Ganged*	Stacked/Ganged*
AMD	Am79C984A, 985, 988A, 989	HFJ11-1081E	HFJ1x-1081E	HFJ2x-1081E
Cirrus Logic	CS8900-CQ/IQ, CS8920, CS8904-CM5	HFJ11-1043E	HFJ1x-1043E	HFJ2x-1043E
Cirrus Logic	CS8900-CQ3/IQ3, CS8904-CM3	HFJ11-1041E	HFJ1x-1041E	HFJ2x-1041E
Intel	LXT901/1A, 907/7A, LXT914/915	HFJ11-1043E	HFJ1x-1043E	HFJ2x-1043E
Intel	LXT905, LXT908	HFJ11-1075E	HFJ1x-1075E	HFJ2x-1075E
LSI	80C24/25	HFJ11-1066E	HFJ1x-1066E	HFJ2x-1066E
NSC	DP83907, DP83953	HFJ11-1086E	HFJ1x-1086E	HFJ2x-1086E
RealTek	RTL8019	HFJ11-S101E	-	-
SMSC	LAN91C95/96 (5V)	HFJ11-S101E	-	-
SMSC	LAN91C96 (3.3V)	HFJ11-S114E	-	-
Ubicom	IP2022	HFJ11-S114E	-	-

## 10/100BASE-TX

Vendor	Silicon P / N	FastJack™ Part Number		
		Single	Ganged*	Stacked/Ganged*
AMD	79C873/4/5	HFJ11-2450E	HFJ1x-2450E	HFJ2x-2450E
AMD	79C973/5	HFJ11-2441E	HFJ1x-2441E	HFJ2x-2441E
ASIX	AX88796L	HFJ11-2450E	HFJ1x-2450E	HFJ2x-2450E
Broadcom	AC101, AC104, AC205/6/7/8	HFJ11-2450E	HFJ1x-2450E	HFJ2x-2450E
Broadcom	BCM52xx, BCM531x	HFJ11-2450E	HFJ1x-2450E	HFJ2x-2450E
Crystal	CS8952	HFJ11-2450E	HFJ1x-2450E	HFJ2x-2450E
Davicom	DM9000	HFJ11-2450E	HFJ1x-2450E	HFJ2x-2450E
IDT	QS6611	HFJ11-2431E	HFJ1x-2431E	HFJ2x-2431E
IDT	QS6612	HFJ11-2439E	HFJ1x-2439E	HFJ2x-2439E
Intel	82558/9, LXT970/1/2/3, LXT976X/978X	HFJ11-2450E	HFJ1x-2450E	HFJ2x-2450E
Intel	LXT974A, LXT975A, LXT980/2/3	HFJ11-2420E	HFJ1x-2420E	HFJ2x-2420E
Kendin	KS8761	HFJ11-2431E	HFJ1x-2431E	HFJ2x-2431E
Kendin	KS8721, KS8737, KS899x	HFJ11-2450E	HFJ1x-2450E	HFJ2x-2450E
LSI	80C220/80C221	HFJ11-2420E	HFJ1x-2420E	HFJ2x-2420E
LSI	80223/84220	HFJ11-2450E	HFJ1x-2450E	HFJ2x-2450E
Marvell	88E3061/81/82/83, 88E6050/1/2	HFJ11-2450E	HFJ1x-2450E	HFJ2x-2450E
Marvell	88E6021, 88E6023	HFJ11-2450E	HFJ1x-2450E	HFJ2x-2450E
NSC	DP83223/83843/83846A/83847	HFJ11-2450E	HFJ1x-2450E	HFJ2x-2450E
RealTek	RTL8139C, RTL8201	HFJ11-2450E	HFJ1x-2450E	HFJ2x-2450E
SMSC	LAN91C111, LAN91C113	HFJ11-2450E	HFJ1x-2450E	HFJ2x-2450E
ST Micro	STE10/100A, STE100P	HFJ11-2450E	HFJ1x-2450E	HFJ2x-2450E
ST Micro	STE400P, STE800P*	HFJ11-2431E	HFJ1x-2431E	HFJ2x-2431E
TDK	78Q2120/1	HFJ11-2450E	HFJ1x-2450E	HFJ2x-2450E
T.I.	TNETE2101	HFJ11-2450E	HFJ1x-2450E	HFJ2x-2450E

\* For Ganged and Stacked/Ganged connectors replace x with the number of ports per row.