

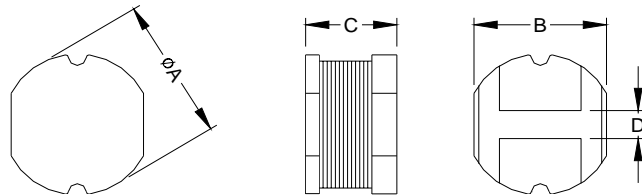
SMT Power Inductor

SI 104 Type

Features

- RoHS compliant.
- Low profile (4.5mm max.Height)), SMD type.
- Unshielded.
- Self-leads,suitable for high density mounting.
- High energy storage and low DCR
- Provided with embossed carrier tape packing.
- Ideal for power source circuits, DC-DC converter, DC-AC inverters inductor applications.
- In addition to the standard versions shown here, customized inductors are available to meet your exact requirements.

Mechanical Dimension:

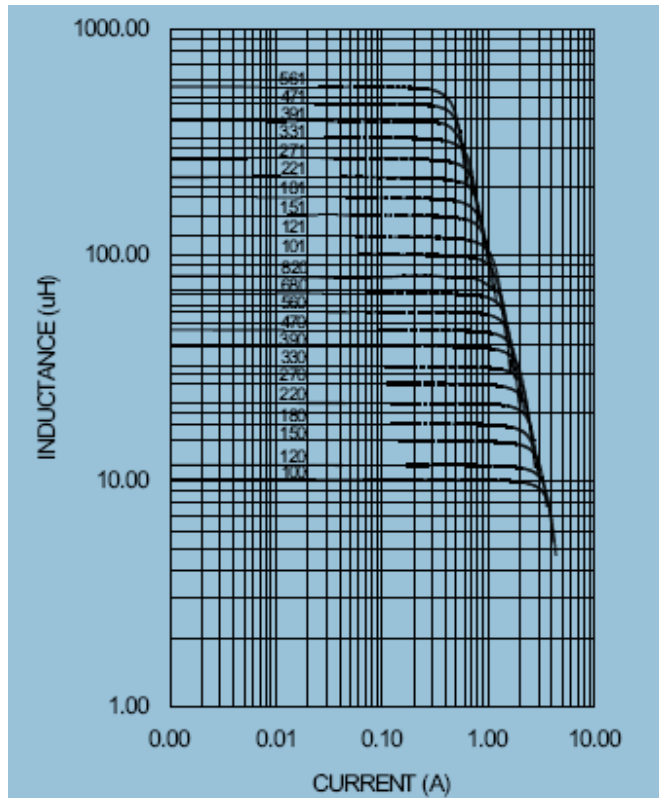


RECOMMENDED PAD PATTERNS

UNIT:mm/inch
 A = 10.0±0.4 / 0.394±0.016
 B = 9.0±0.2 / 0.354±0.008
 C = 4.0±0.5 / 0.157±0.020
 D = 2.0±0.2 / 0.079±0.008

Electrical Characteristics: 25 °C, 1KHz, 1V

PART NO.	L ¹ (uH)	DCR () MAX	I _{rated} ² (A dc)
SI104-100K	10.0	0.053	2.40
SI104-120K	12.0	0.061	2.20
SI104-150K	15.0	0.070	1.90
SI104-180K	18.0	0.081	1.80
SI104-220K	22.0	0.088	1.60
SI104-270K	27.0	0.100	1.50
SI104-330K	33.0	0.120	1.30
SI104-390K	39.0	0.151	1.20
SI104-470K	47.0	0.170	1.10
SI104-560K	56.0	0.199	1.00
SI104-680K	68.0	0.223	0.91
SI104-820K	82.0	0.252	0.85
SI104-101K	100.0	0.344	0.74
SI104-121K	120.0	0.396	0.69
SI104-151K	150.0	0.544	0.61
SI104-181K	180.0	0.621	0.56
SI104-221K	220.0	0.721	0.53
SI104-271K	270.0	0.949	0.45
SI104-331K	330.0	1.100	0.42
SI104-391K	390.0	1.245	0.38
SI104-471K	470.0	1.526	0.35
SI104-561K	560.0	1.904	0.32



- 1.Tolerance of inductance±10%.
- 2.I_{rated} is the DC current which cause the inductance drop less than 10% of its nominal inductance without current and the surface temperature of the part increase less than 45 °C.
- 3.Operating temperature:-20 °C to 105 °C (including self-temperature rise).