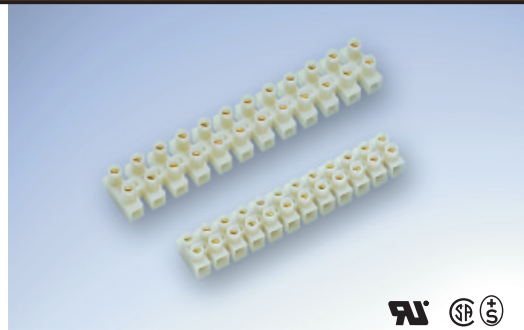


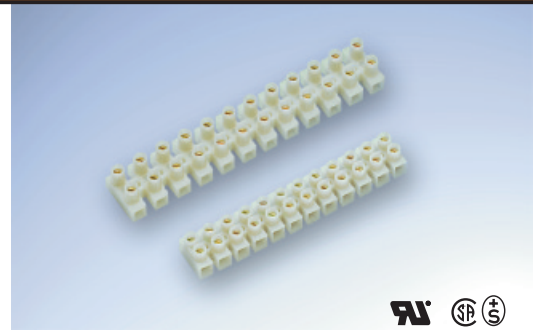


mm to inch

1 inch = 25.4 mm
1 mm = .040 inches



ATW 01 Flat base without wire protection



ATW 02 Flat base with wire protection



Additional Centerline

ATW 01 ATW 02

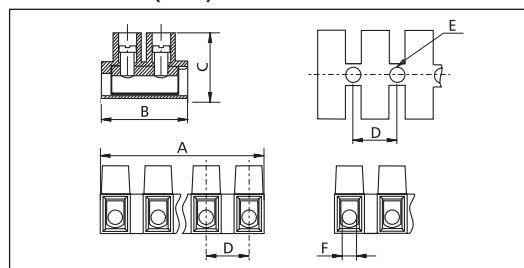
Electrical Data

Voltage	600 V	
	centerline 8	10
Current (A)	20	30
Wire range (AWG)	12 - 22	10 - 22
Screw torque (lbs.-in)	3.5	4.4
Wire strip length (mm)	5.3	7.3

Mechanical Data

Housing	UL 94V-2	
Working Temperature	105 °C	
Color	natural	
Terminal	brass metal alloy, tin plated	
Screw	centerline 8	10
	M2.6 M3 zinc plated, yellow chromed	
Pole sizes	1 to 12	

Dimensions (mm)



centerline	A	B	C	D	E	F
8	95.8	16.3	13.3	8.0	2.9	2.8±0.1
10	117.0	20.2	15.8	10.0	3.6	3.2±0.1

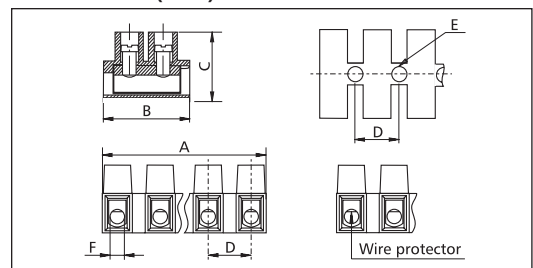
Electrical Data

Voltage	600 V	
	centerline 8	10
Current (A)	20	30
Wire range (AWG)	12 - 22	10 - 22
Screw torque (lbs.-in)	3.5	4.4
Wire strip length (mm)	5.3	7.3

Mechanical Data

Housing	UL 94V-2	
Working Temperature	105 °C	
Color	natural	
Terminal	brass metal alloy, tin plated	
Screw	centerline 8	10
	M2.6 M3 zinc plated, yellow chromed	
Wire protector	stainless spring steel	
Pole sizes	1 to 12	

Dimensions (mm)



centerline	A	B	C	D	E	F
8	95.8	16.3	13.3	8.0	2.9	2.8±0.1
10	117.0	20.2	15.8	10.0	3.6	3.2±0.1

Part Numbers

ATW01 centerline 8 mm
Part No. **ATW01 D** **09**

01	02	03	04	05	06	07	08
09	10	11	12				

ATW01 centerline 10 mm
Part No. **ATW01 9** **09**

01	02	03	04	05	06	07	08
09	10	11	12				

Part Numbers

ATW02 centerline 8 mm
Part No. **ATW02 D** **09**

01	02	03	04	05	06	07	08
09	10	11	12				

ATW02 centerline 10 mm
Part No. **ATW02 9** **09**

01	02	03	04	05	06	07	08
09	10	11	12				