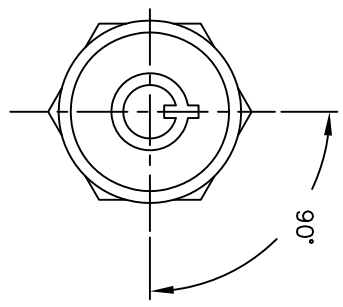
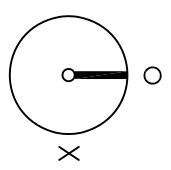
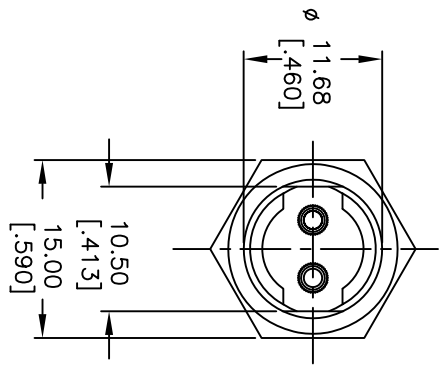
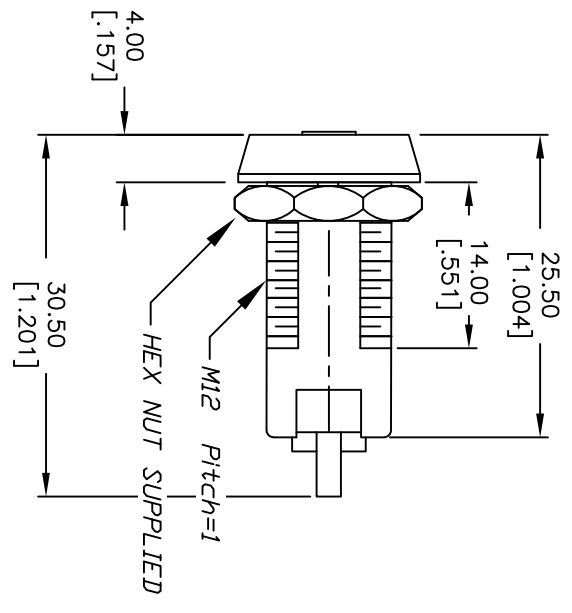


PDS 1



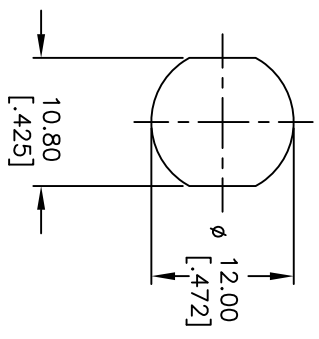
PDS 2



CIRCUIT: SPST  
CONTACT CONFIGURATION

SWITCH FUNCTION	PDS 1	PDS 2
	↖	→
DEF		DN

LEGEND  
○ = OFF POSITION  
■ = INDICATES KEY PULL  
X = INDICATES NO KEY PULL



RECOMMENDED PANEL CUTOUT

NOTES:

1. ALL DIMENSIONS IN MM [INCH]
2. GENERAL TOLERANCE: X.X=±0.4  
X.XX=±0.25
3. TERM. NOS. FOR REFERENCE ONLY.
4. RATING: 1A @125VAC, 0.5A @250VAC
5. CONTACT RESISTANCE: 10mILLI-OHMS
6. DIELECTRIC STRENGTH: 1000 VAC-1Minute
7. INSULATION RESISTANCE: 200 Mega-OHMS min.
8. MATERIALS:

HOUSING: ZINC ALLOY DIE CAST  
CYLINDER: ZINC ALLOY W/CHROME PLATING  
TERMINAL AND CONTACTS: SILVER PLATED  
KEYS (2) KEY CODE 1001: TUBULAR  
ZINC ALLOY, CHROME PLATING

REV.	ECN No.	DESCRIPTION	DATE	CHKD
A	21377	RELEASED FOR PRODUCTION	2/17/14	EBP

THE INFORMATION CONTAINED IN THIS DOCUMENT IS PROPRIETARY TO E-SWITCH AND IS NOT TO BE COPIED OR TRANSFERRED

TITLE: **E-SWITCH®** KD103A1001

SCALE	DATE	DR	DWG	REV
1.5:1	2/17/14	EBP	K100209	A