



# CONNECTOR ASSY

PARTS TABLE 部品表

No.	Part name 部品名	QTY.	Note 備考
⑤	HOUSING ハウジング	1	HIGH TEMP THERMOPLASTIC COLOR : BLACK, UL94V-0
⑥	SIGNAL CONTACT シグナルコンタクト	7	COPPER ALLOY CONTACT AREA : Au SOLDERING AREA : Au or TIN
⑦	POWER CONTACT パワーコンタクト	6	COPPER ALLOY CONTACT AREA : Au SOLDERING AREA : Au or TIN
⑧	SOLDER PEG (CENTER) 補強金具 (中央部)	1	COPPER ALLOY TIN PLATING
⑨	SOLDER PEG (L&R) 補強金具 (左、右)	2	COPPER ALLOY TIN PLATING

<P/N composition> <P/N 構成>

10085305 - X X X X X LF

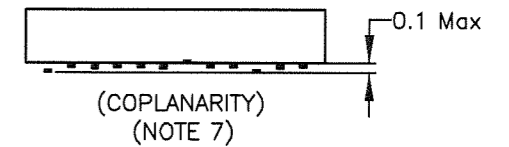
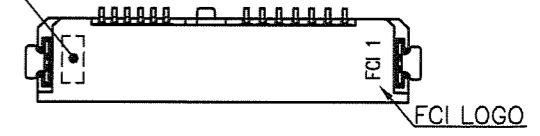
- LEAD-FREE
- PACKAGE SPEC
- E : 56mm WIDTH TAPE AND REEL (EMBOSS ASSY)
- PE : 44mm WIDTH TAPE AND REEL (EMBOSS ASSY)
- T : TRAY (TRAY ASSY)
- A : CONNECTOR ASSY (NOT PACKAGE)
- CONTACT TAIL LENGTH (DIM C)
  - 0 : 1.0mm
  - 1 : 0.7mm
- SIGNAL CONTACT TAIL WIDTH (DIM B)
  - 0 : 0.35mm
  - 1 : 0.40mm
- HSG BOSS LENGTH (DIM A)
  - 0 : 1.0mm
  - 1 : 0.7mm
  - 9 : 0mm (WITHOUT BOSS)
- CONTACT PLATING (CONTACT AREA / SOLDERING AREA)
  - 0 : GOLD FLASH (0.05μm) / TIN PLATING
  - 1 : 0.38μm GOLD PLATING / TIN PLATING
  - 2 : 0.76μm GOLD PLATING / TIN PLATING
  - 3 : GOLD FLASH (0.05μm) / GOLD FLASH (0.05μm)
  - 4 : 0.76μm GOLD PLATING / GOLD FLASH (0.05μm)

NOTE

5. MATERIAL : SEE TABLE
6. FINISH : SEE TABLE AND P/N COMPOSITION TABLE
7. COPLANARITY : 0.1 MAX. (CONTACT AND SOLDER PEG)
8. DATE CODE MARK : YY/MM/DD/XX XX IS USED TO MARK CONTACT PLATING SPEC.  
"05" : FLASH, "15" : 15μ, "30" : 30μ

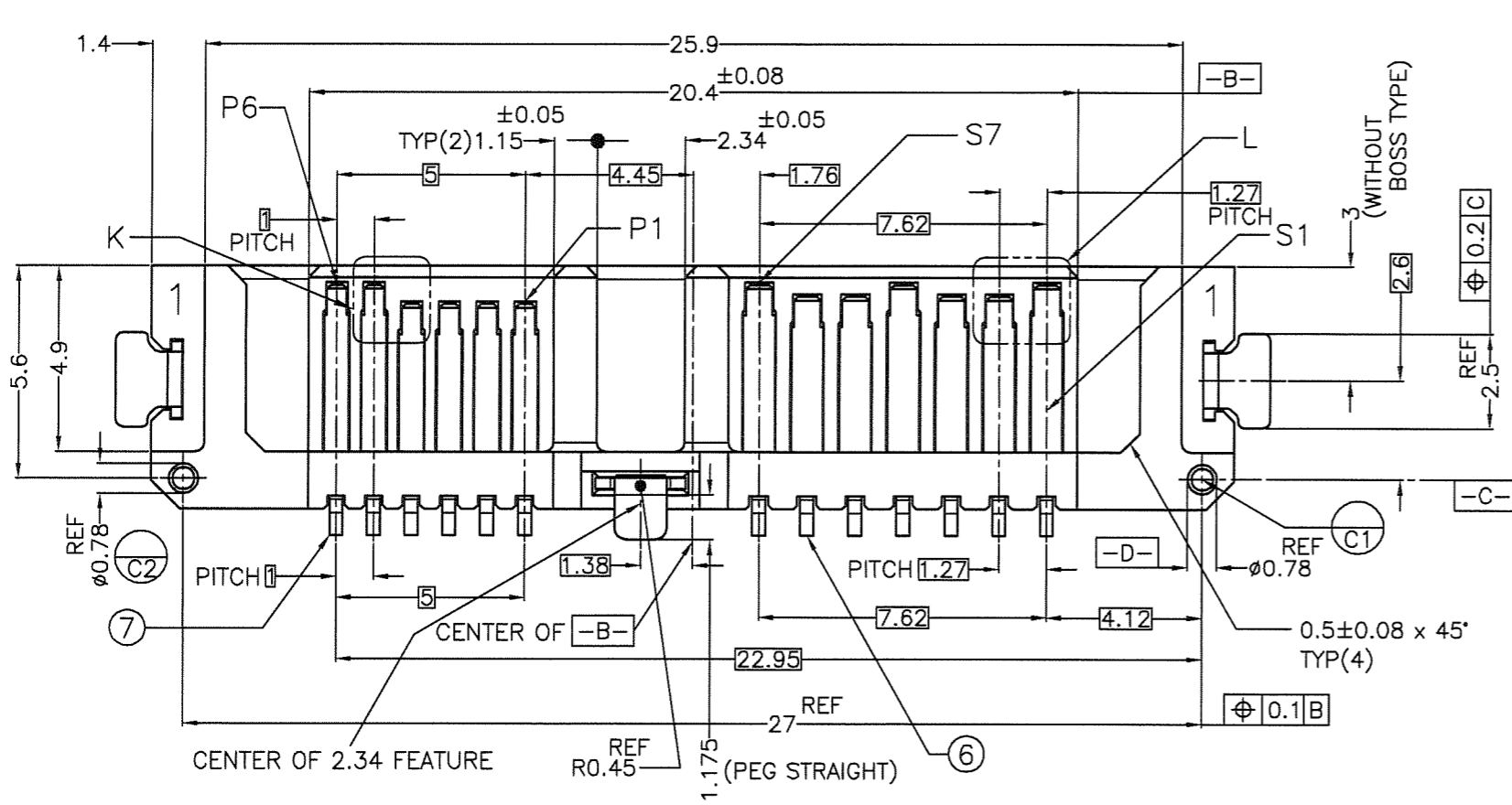
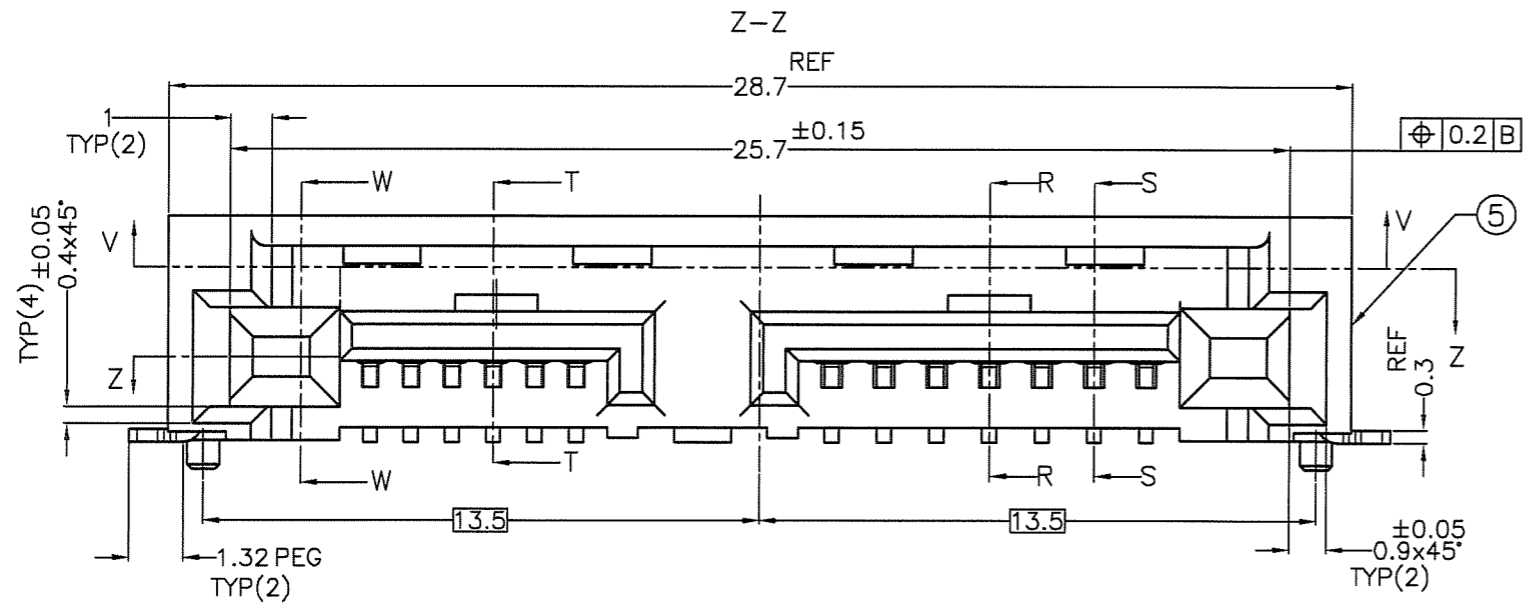
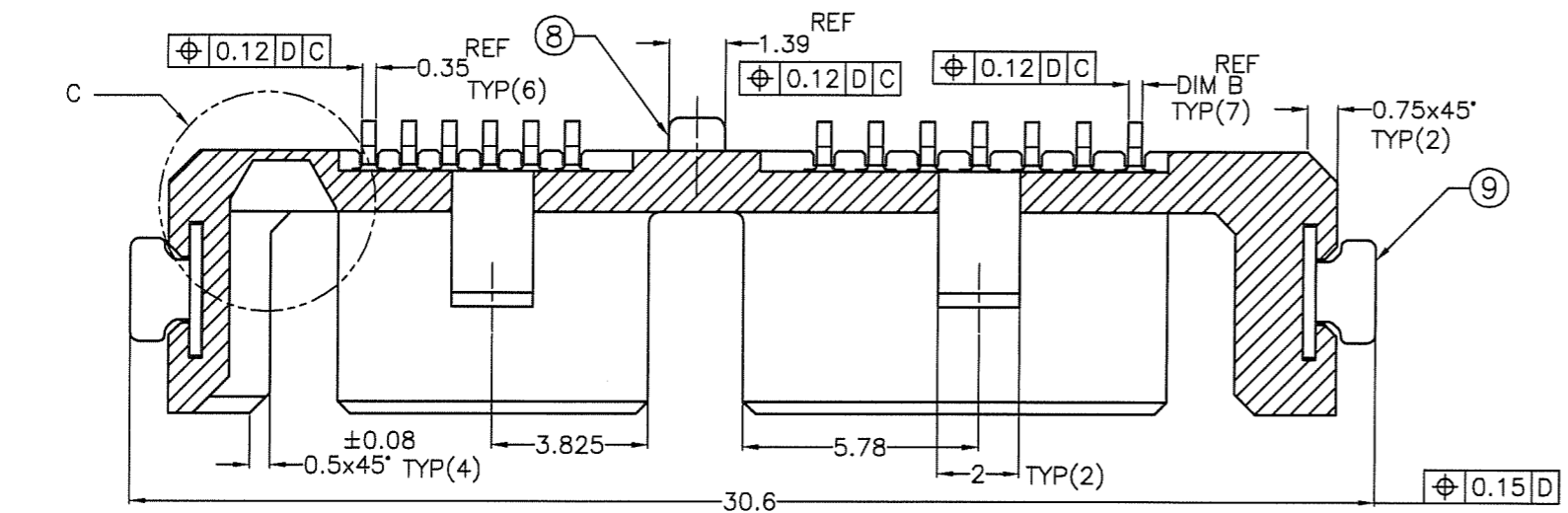
注記

5. 材料 : 表参照
6. めっき : 表及び型番構成参照
7. コプラナリティ : 0.1以下 (端子、金具)
8. デートコード刻印 : YY/MM/DD/XX XXはコンタクトのめっきの種類  
"05" : FLASH, "15" : 15μ, "30" : 30μ



mat'l. code		surface	tolerance	projection	product family	CODE
---		ISO 1302	ISO 406	ISO 1101	530F SATA PLUG SLIM LINE	JP
ltr	description	ecn no	dr	date	tolerances unless otherwise specified	title
A	RELEASED	J08-0078	N.S	2008-2-28	0.X ±0.2	SLIM LINE SATA 7+6P PLUG
					0.XX ±0.2	STANDARD, R/A SMT
					0.XXX ±0.2	
F	REVISED	J09-0030	N.S	2009-1-22	±2°	scale 8:1
G	REVISED	J09-0087	N.S	2009-3-8	dr	N.SASAME 2010-1-27
H	REVISED	J09-0134	N.S	2009-4-13	enrg	N.SASAME 2010-1-27
J	REVISED	J09-0225	N.S	2009-8-10	chr	2010-1-27
K	REVISED	J09-0425	N.S	2010-1-27	appd	2010-1-27
sheet	revision					
index	sheet					

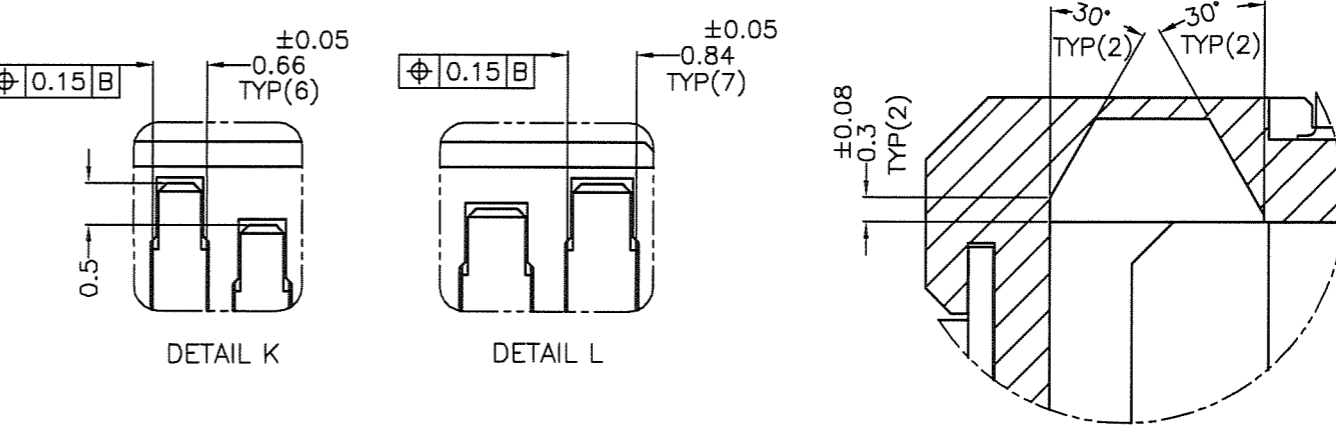
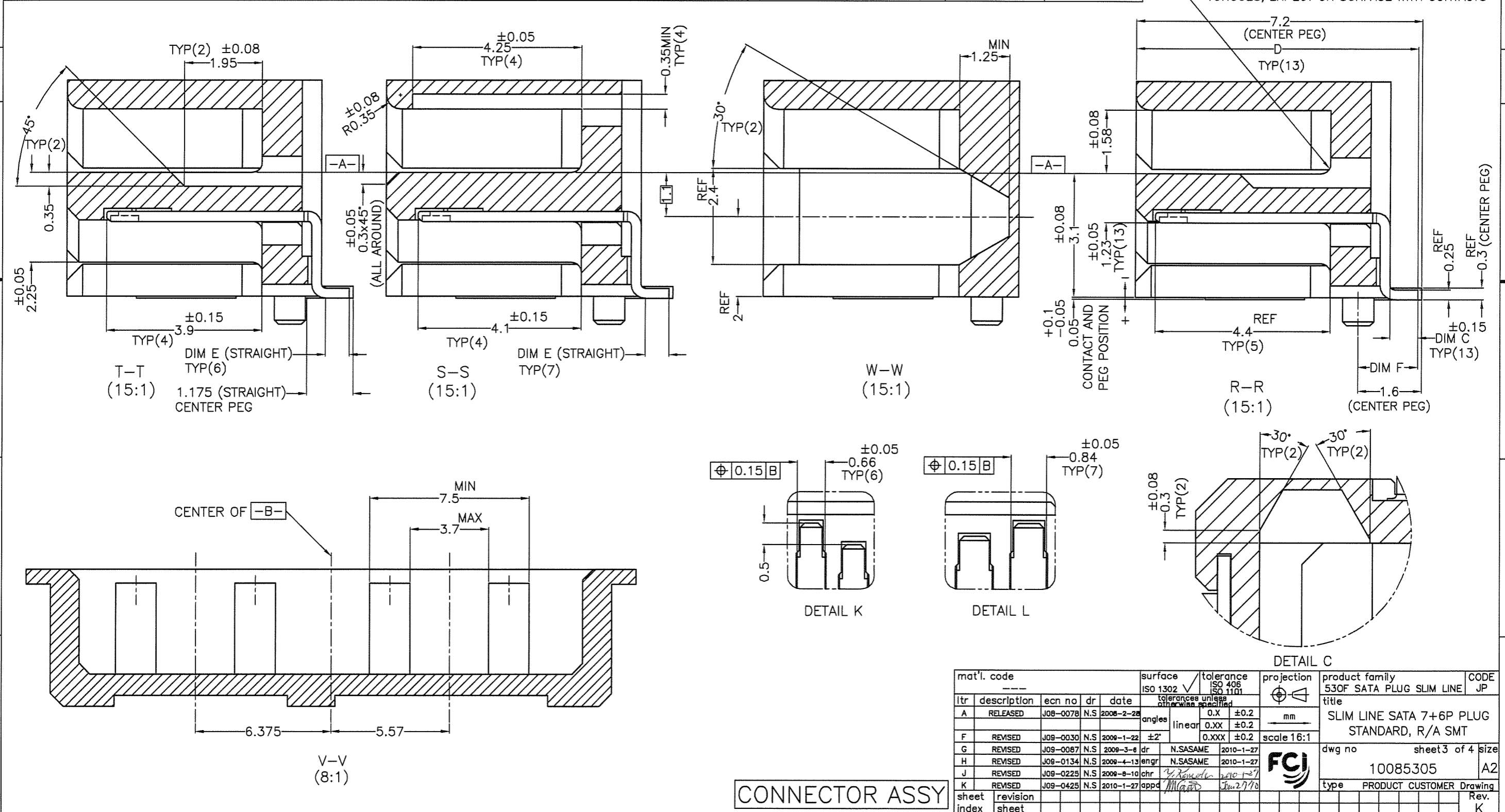
dwg no 10085305 sheet 2 of 4 size A2  
type PRODUCT CUSTOMER Drawing



Copyright FCI

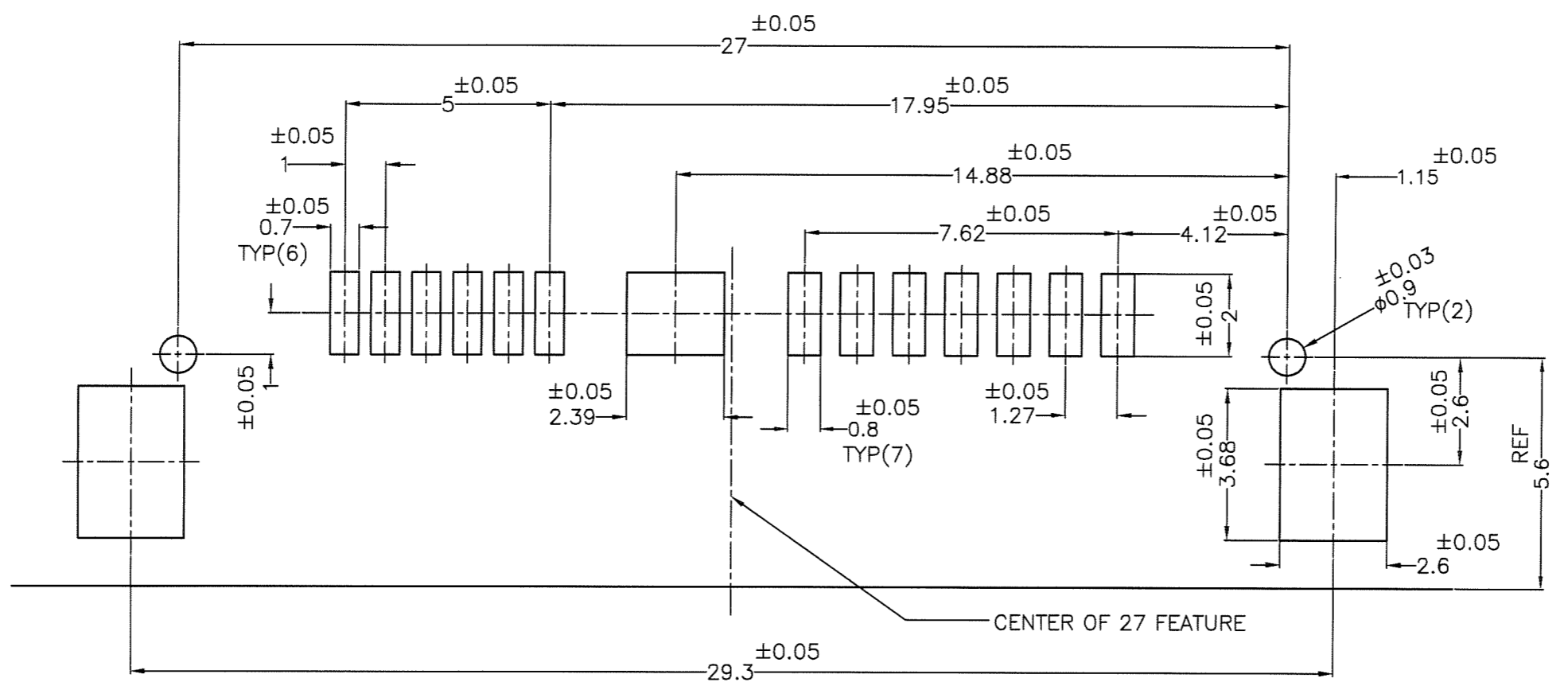
PRODUCT NO.	CONTACT AREA PLATING	SOLDERING AREA PLATING	HSG BOSS HEIGHT (DIM A)	TAIL WIDTH (DIM B)	TAIL LENGTH (DIM C)	TAIL LENGTH (DIM D)	TAIL LENGTH (DIM E)	TAIL LENGTH (DIM F)
10085305-0010ALF	GOLD FLASH 0.05um[2u"] MIN	1.91um [75u"] MIN. 100% TIN	1.0mm	0.4mm	1.0mm	7.4mm	0.9mm	1.8mm
10085305-0101ALF	GOLD FLASH 0.05um[2u"] MIN	1.91um [75u"] MIN. 100% TIN	0.7mm	0.35mm	0.7mm	7.1mm	0.6mm	1.5mm
10085305-0901ALF	GOLD FLASH 0.05um[2u"] MIN	1.91um [75u"] MIN. 100% TIN	----	0.35mm	0.7mm	7.1mm	0.6mm	1.5mm
10085305-0110ALF	GOLD FLASH 0.05um[2u"] MIN	1.91um [75u"] MIN. 100% TIN	0.7mm	0.4mm	1.0mm	7.4mm	0.9mm	1.8mm
10085305-2010ALF	GOLD 0.76um[30u"] MIN	1.91um [75u"] MIN. 100% TIN	1.0mm	0.4mm	1.0mm	7.4mm	0.9mm	1.8mm
10085305-2110ALF	GOLD 0.76um[30u"] MIN	1.91um [75u"] MIN. 100% TIN	0.7mm	0.4mm	1.0mm	7.4mm	0.9mm	1.8mm
10085305-2101ALF	GOLD 0.76um[30u"] MIN	1.91um [75u"] MIN. 100% TIN	0.7mm	0.35mm	0.7mm	7.1mm	0.6mm	1.5mm
10085305-4100ALF	GOLD 0.76um[30u"] MIN	GOLD FLASH 0.05um[2u"] MIN	0.7mm	0.35mm	1.0mm	7.4mm	0.9mm	1.8mm

R0.25±0.08  
TOTAL 10 PLC AROUND BASE OF "L"-SHAPED TONGUES, EXPECT ON SURFACE WITH CONTACTS

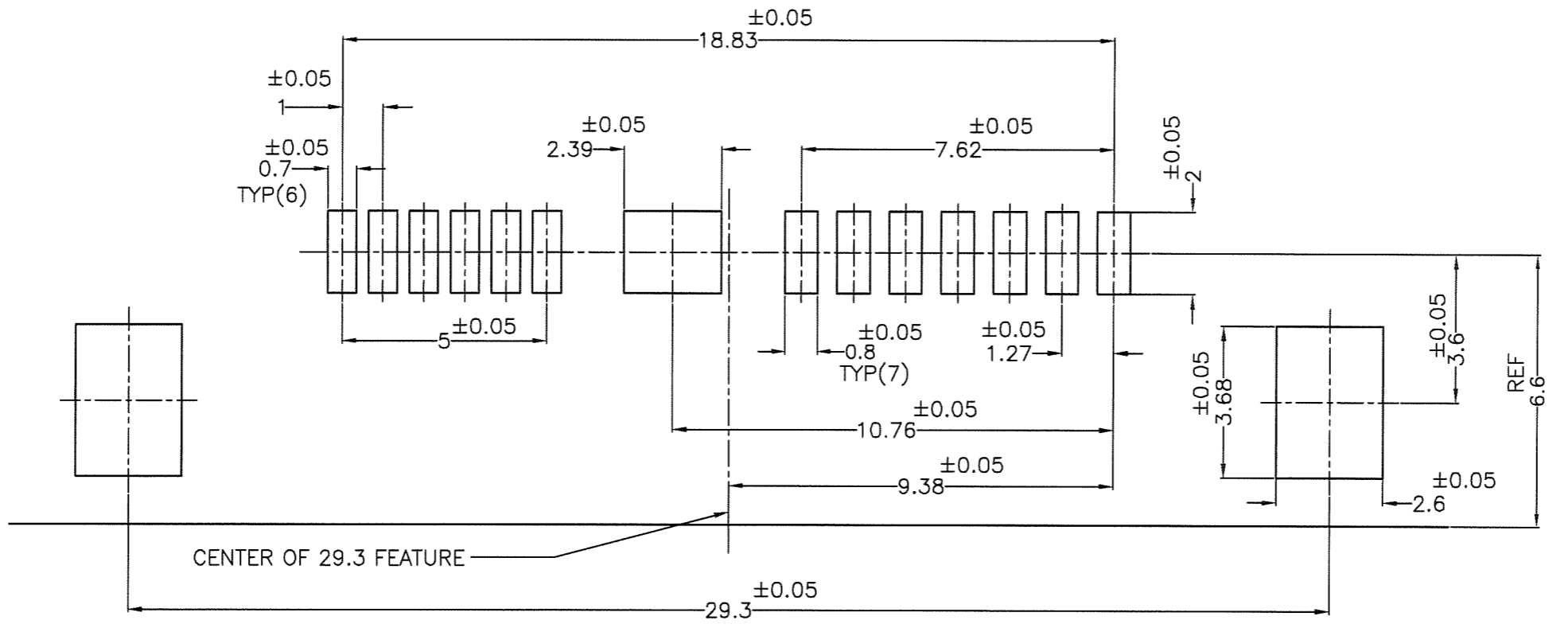


mat'l. code		surface		tolerance		projection		product family		CODE	
---		ISO 1302		ISO 406		ISO 1101		530F SATA PLUG SLIM LINE		JP	
itr	description	ecn no	dr	date	tolerance unless otherwise specified	linear	mm	SLIM LINE SATA 7+6P PLUG STANDARD, R/A SMT			
A	RELEASED	J08-0078	N.S	2008-2-28	0.X ±0.2	0.XX ±0.2	mm	scale 16:1			
F	REVISED	J09-0030	N.S	2009-1-22	±2'	0.XXX ±0.2	mm	dwg no sheet 3 of 4 size			
G	REVISED	J09-0087	N.S	2009-3-8	dr	N.SASAME	2010-1-27	10085305 A2			
H	REVISED	J09-0134	N.S	2009-4-13	enrg	N.SASAME	2010-1-27	type PRODUCT CUSTOMER Drawing			
J	REVISED	J08-0225	N.S	2008-8-10	chr	N.SASAME	2010-1-27	Rev. K			
K	REVISED	J09-0425	N.S	2010-1-27	appd	M. G. [Signature]	Jun 27 2010				
sheet index	revision sheet										

CONNECTOR ASSY



RECOMMENDED PCB PATTERN LAYOUT (WITH BOSS TYPE)



RECOMMENDED PCB PATTERN LAYOUT (WITHOUT BOSS TYPE)

mat'l. code		surface		tolerance		projection		product family		CODE	
---		ISO 1302		ISO 406		1st angle		530F SATA PLUG SLIM LINE		JP	
description		ecn no		date		tolerances unless otherwise specified		title			
A	RELEASED	J08-0078	N.S	2008-2-28	linear	0.X	±0.2	SLIM LINE SATA 7+6P PLUG STANDARD, R/A SMT			
F	REVISED	J09-0030	N.S	2009-1-22	linear	0.XX	±0.2	scale 10:1			
G	REVISED	J09-0087	N.S	2009-3-8	dr	0.XXX	±0.2	dwg no		sheet 4 of 4 size	
H	REVISED	J09-0134	N.S	2009-4-13	enr			10085305		A2	
J	REVISED	J09-0225	N.S	2009-8-10	chr			type		PRODUCT CUSTOMER Drawing	
K	REVISED	J09-0425	N.S	2010-1-27	appd			Rev.		K	
sheet index	revision										