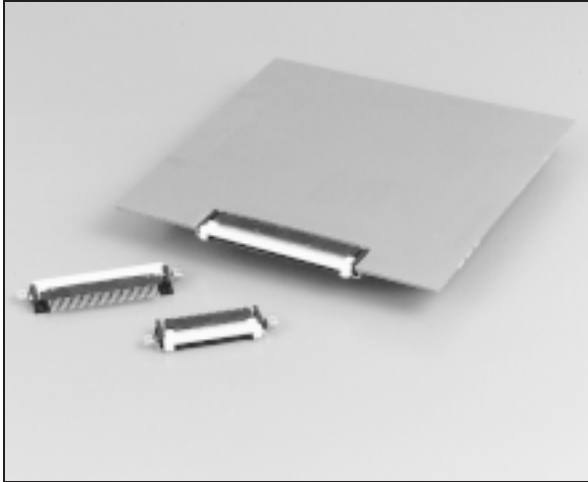


IL-FHR-B SERIES CONNECTORS

0.5mm (.020") Contact Spacing Connectors for FPC



IL-FHR Series Suspended (B-Type)



IL-FHR Series, B-type connectors are extremely high density, low profile connectors for PCB-to-FPC applications. The design utilizes a slider for easy, yet reliable, engagement of the flex cable to the contacts. They are ideally used in telecommunications devices such as personal computers (PC), personal digital assistants (PDA) and LCD displays.

FEATURES

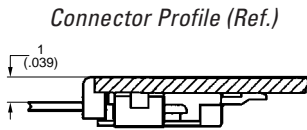
- SMT configuration
- 1.4mm (.055") installed height on 0.6mm (.024") PCB
- Swinging slider construction permits slider operation with one hand
- 0.5mm (.020") contact spacing
- Applicable FPC 0.3mm (.012") center, 0.2mm (.008") thick with reinforcement
- 0.5 Amp operating current
- Available in embossed tape for automatic mounting

GENERAL SPECIFICATIONS

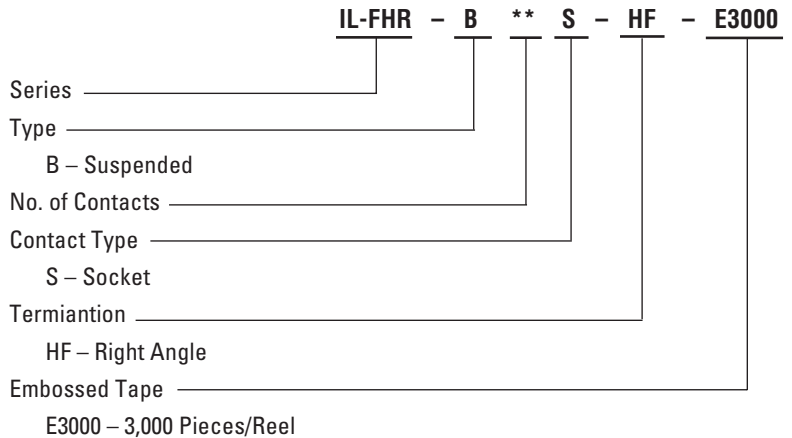
Number of Contacts	20, 26, 30, 36, 40, 50
Applicable FPC	0.5mm (.020") Center 0.3mm (.012") Thick with reinforcement
Current Rating	0.5 Amps
Dielectric Withstanding Voltage	250 VAC r.m.s. (for one minute)
Insulation Resistance	100 megohms min.
Contact Resistance	20 milliohms max.
Operating Temperature	-40°C to +85°C

MATERIALS AND FINISHES

Description	Materials/Finishes
Base Insulator	Heat-resistant Plastic (UL94V-0, Black)
Slide Insulator	Heat-resistant Plastic (UL94V-0, White)
Contact	Copper Alloy/Tin Plated
Hold-down	Copper Alloy/Tin Plated



ORDERING INFORMATION

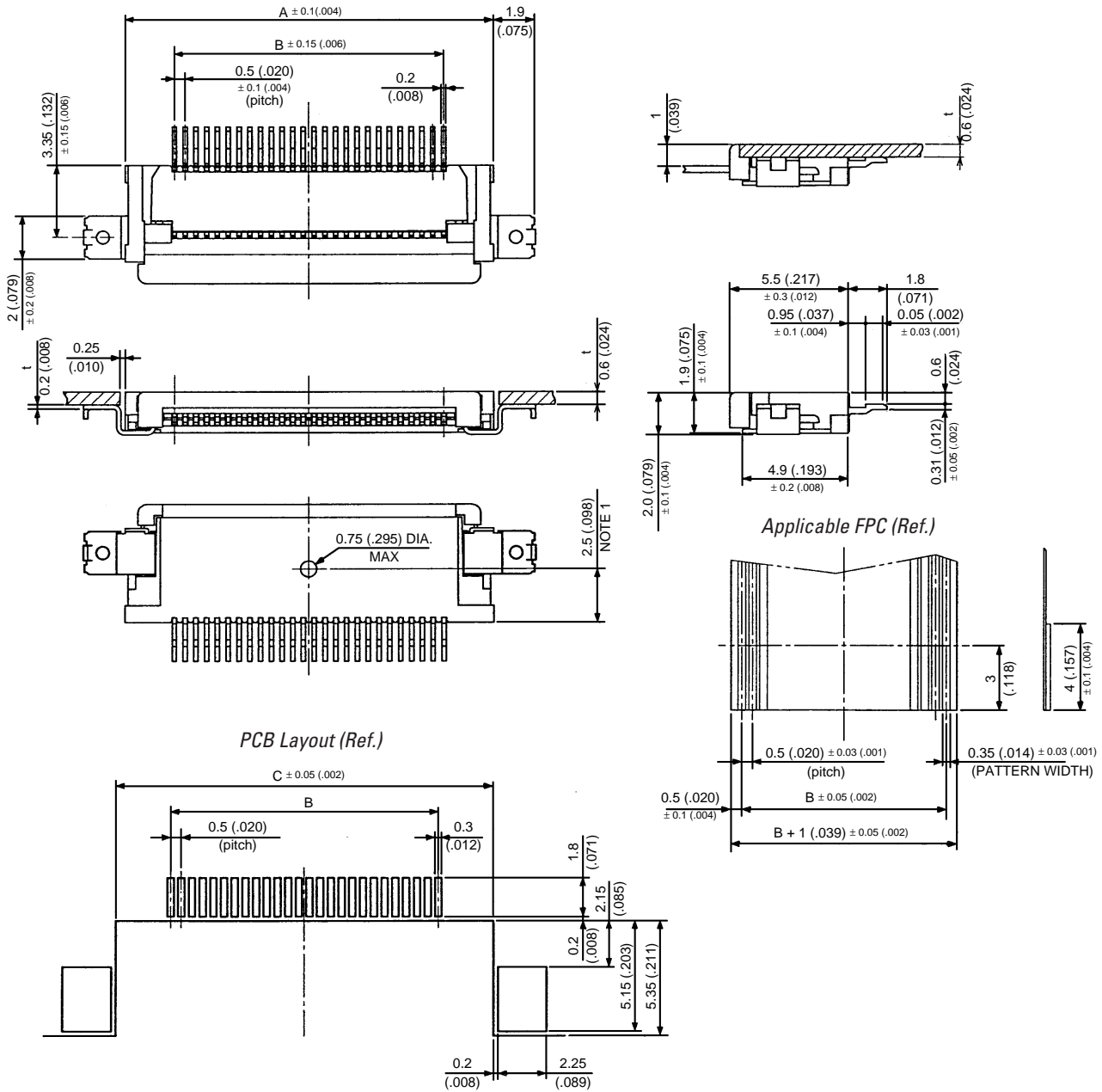


Dimensions and specifications subject to change without notice.



IL-FHR-B SERIES CONNECTORS

0.5mm (.020") Contact Spacing Connectors for FPC



No. of Contacts	Part Number*	A	B	C
20	IL-FHR-BF-20S-HF	14.1 (.556)	9.5 (.374)	14.6 (.575)
26	IL-FHR-BF-26S-HF	17.1 (.673)	12.5 (.492)	17.6 (.693)
30	IL-FHR-BF-30S-HF	19.1 (.752)	14.5 (.571)	19.6 (.772)
36	IL-FHR-BF-36S-HF	22.1 (.870)	17.5 (.689)	22.6 (.890)
40	IL-FHR-BF-40S-HF	24.1 (.949)	19.5 (.768)	24.6 (.968)
50	IL-FHR-BF-50S-HF	29.1 (1.146)	24.5 (.965)	29.6 (1.165)

* For embossed tape, add E3000 to part number.

Dimensions in mm (inches).