

Part/Keyword Search



Detailed Drawing



Printer Friendly Datasheet

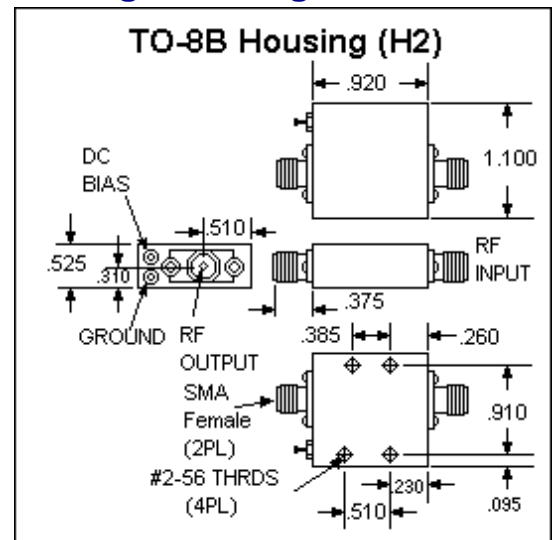
## BR6514 / SBR6514\*

\* Part number for additional environmental screening.

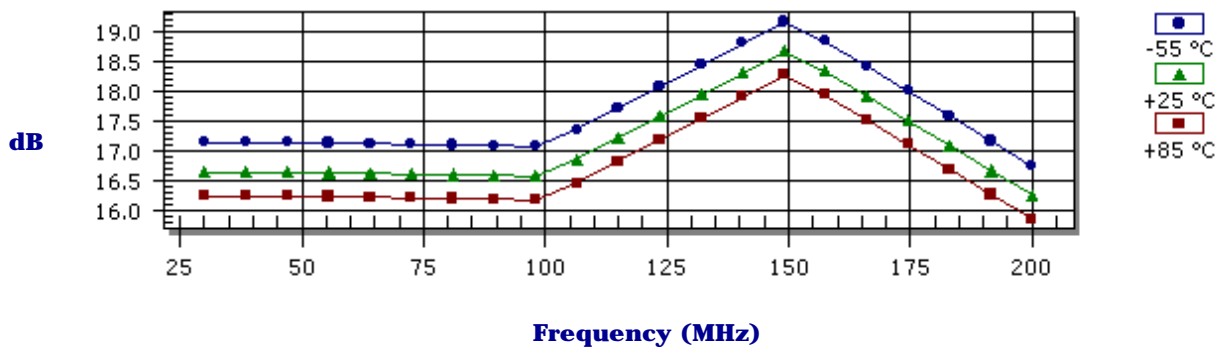
### Performance Data

Frequency	30.0 - 200.0 MHz
Gain	16.5 dB Typical 15.0 dB Min
Noise Figure	2.0 dB Typical 3.0 dB Max
P <sub>1dB</sub>	-2.0 dBm Typical -3.0 dBm Min
3 <sup>rd</sup> Order Intercept	11.0 dBm Typical
2 <sup>nd</sup> Order Intercept	11.0 dBm Typical
VSWR	1.4/2.0 Input Typ/Max 1.2/2.0 Output Typ/Max
Reverse Isolation	-20.0 dB Typical -18.5 dB Min
Power Supply	15.0 Volts 8.0 mA
Operating Temperature	-55.0 - 85.0 °C

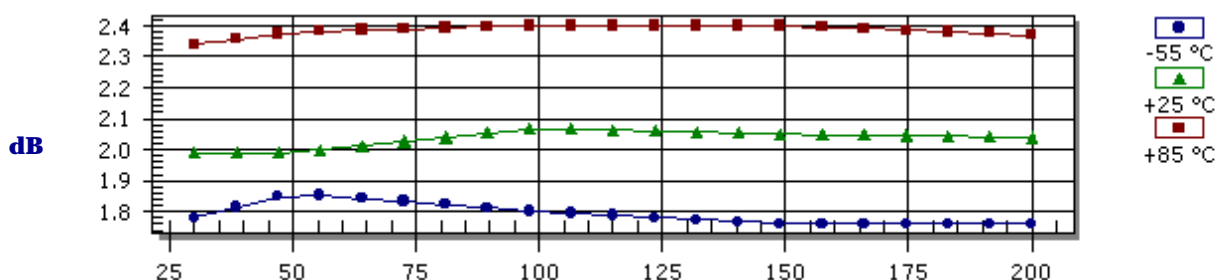
### Package Drawing



### Gain



### Noise Figure



Products

Amplifiers

VCOs

Limiting Amplifiers

Switches

Linearizers

Limiters

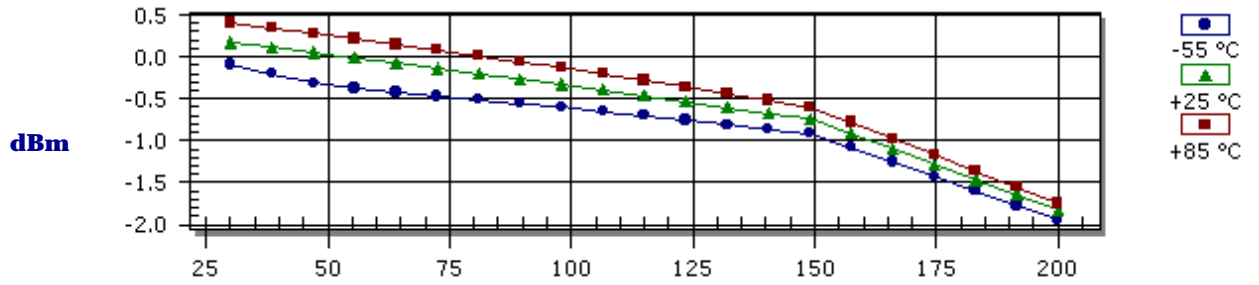
Analog Attenuators

Digital Attenuators

Detectors

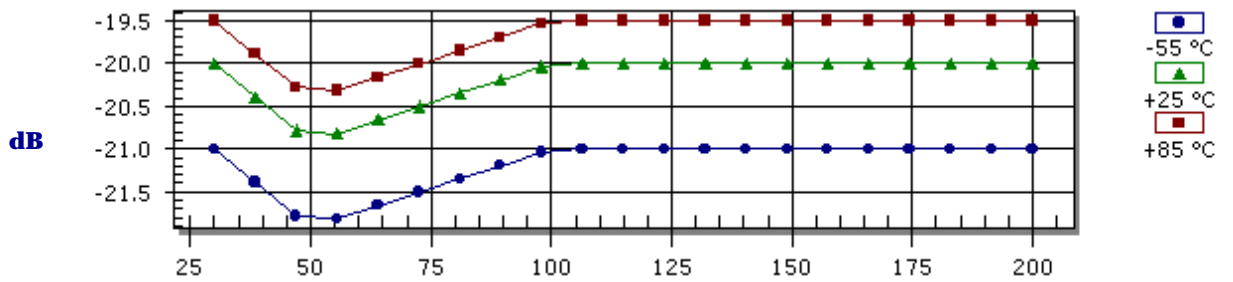
Frequency (MHz)

### **P<sub>1dB</sub> Compression Point**



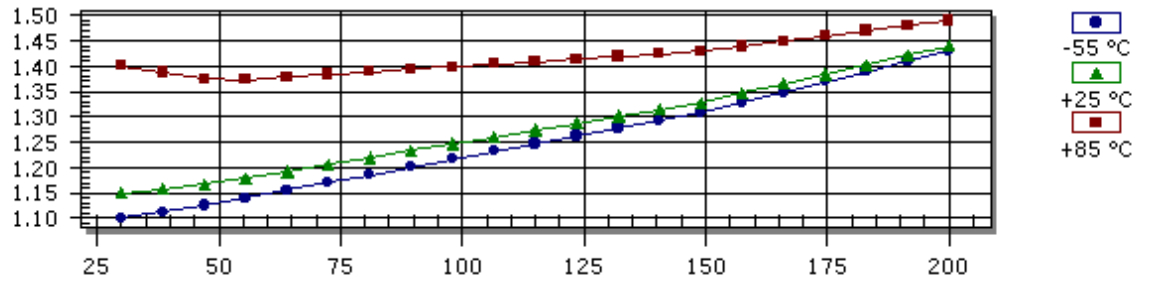
Frequency (MHz)

### **Reverse Isolation**



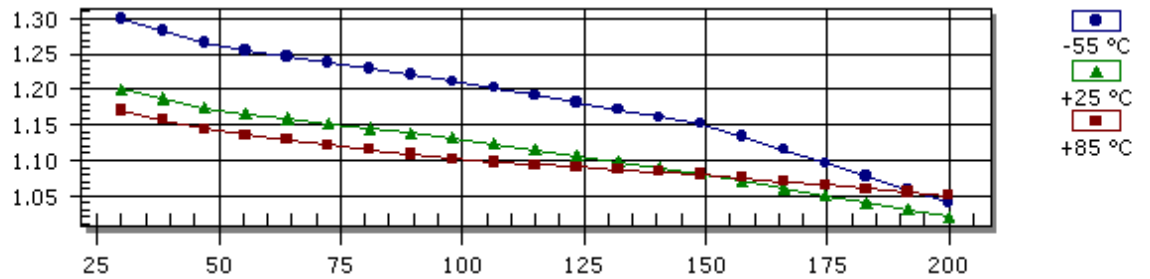
Frequency (MHz)

### **Input VSWR**



Frequency (MHz)

### **Output VSWR**



Frequency (MHz)

## S-Parameters

Frequency	S11 Mag	S11 Ang	S21 Mag	S21 Ang	S12 Mag	S12 Ang	S22 Mag	S22 Ang
30.0	0.070	147.00	6.800	174.00	0.100	0.00	0.090	174.00
50.0	0.080	135.00	6.800	169.00	0.090	-1.00	0.080	170.00
100.0	0.110	100.00	6.750	158.00	0.100	-4.00	0.060	156.00
150.0	0.140	75.00	8.640	147.00	0.100	-7.00	0.040	154.00
200.0	0.180	56.00	6.500	136.00	0.100	-8.00	0.010	-120.00

## Absolute Maximum Conditions

Maximum Operating Temperature	-55.0 - 100.0 °C	Maximum Storage Temperature	-62.0 - 125.0 °C
Maximum Case Temperature	125.0 °C	Maximum Supply Voltage	18.0 Volts
Continuous RF Input Power	10.0 dBm	Short Term RF Input Power (1 minute max)	50.0 mW
Maximum Peak Power (3 µsec max)	0.5 W		

Amplifonix | 2707 Black Lake Place | Philadelphia, PA 19154  
Tel: 215.464.4000 | FAX: 215.464.4001 | Email: [info@amplifonix.com](mailto:info@amplifonix.com)

# i2 Technologies US, Inc.

## HTML Pages converted to PDF Document

This document contain component information from the manufacturer's website which are not available in a revision controlled document from the manufacturer. To facilitate the addition of these parts into the Electronics Database, we are converting the HTML pages related to that part, from the manufacturer's website into Adobe PDF format. The contents of this document is based on the information provided on the manufacturer's website, therefore the information may have been changed by the manufacturer since this was created.

