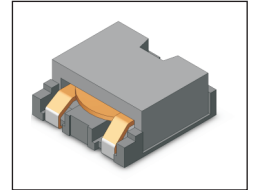


SMT Power Inductor

HMU1045, 1050 & 1080 Type

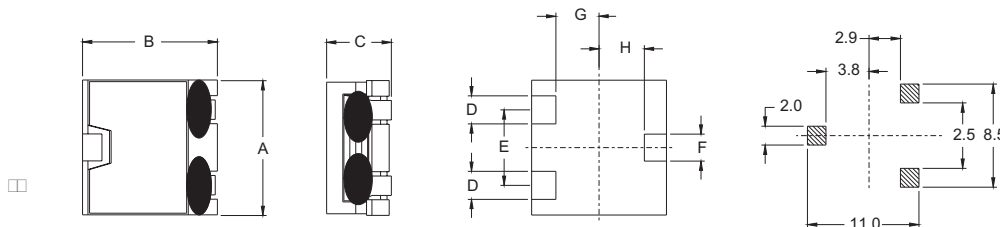
Features

- RoHS compliant.
- Low profile, SMD type.
- High current.
- Magnetic shielded.
- High energy storage and low DCR.
- Provided with embossed carrier tape packing.
- Ideal for power source circuits, DC-DC converter, DC-AC inverters inductor applications.
- In addition to the standard versions shown here, customized inductors are available to meet your exact requirements.



Mechanical Dimension :

RECOMMENDED PAD PATTERNS



UNIT : mm/inch
 A = 10.40 / 0.409 Max.
 B = 10.40 / 0.409 Max.
 D = 2.00 / 0.079
 E = 5.50 / 0.217
 F = 1.40 / 0.055
 G = 2.90 / 0.114
 H = 3.80 / 0.150

Electrical Characteristics : 25°C, 100KHz, 1V

| PART NO. | L ¹ (uH) | Li (uH) MIN. | DCR (mΩ) MAX | I _{sat} ² (Adc) | I _{rms} ³ (Adc) | HEIGHT "C" (mm/inch) MAX. |
|---------------|------------------------|-----------------|-----------------|--|--|------------------------------|
| HMU1045-0R7 | 0.7 | 0.50 ± 20% | 1.7 | 20.0 | 20.0 | 4.5 / 0.177 |
| HMU1050-0R5 | 0.5 | 0.40 | 1.6 | 25.0 | 25.0 | 5.0 / 0.197 |
| HMU1050-0R6 | 0.6 | 0.48 | 1.6 | 17.0 | 25.0 | 5.0 / 0.197 |
| HMU1050-1R0 | 1.0 | 0.80 | 2.9 | 15.0 | 17.0 | 5.0 / 0.197 |
| HMU1050-1R5 | 1.5 | 1.20 | 6.0 | 16.0 | 11.5 | 5.0 / 0.197 |
| HMU1050-1R5DL | 1.5 | 1.20 | 3.8 | 13.5 | 14.0 | 5.0 / 0.197 |
| HMU1050-1R5HS | 1.5 | 1.20 | 8.2 | 22.0 | 9.5 | 5.0 / 0.197 |
| HMU1050-1R8 | 1.8 | 1.44 | 6.0 | 15.0 | 11.5 | 5.0 / 0.197 |
| HMU1080-1R5HS | 1.5 | 1.20 | 3.5 | 20.0 | 14.5 | 8.0 / 0.315 |
| HMU1080-2R2HS | 2.2 | 1.76 | 3.5 | 14.0 | 14.5 | 8.0 / 0.315 |

1. Tolerance of inductance is ± 20%.
2. I_{sat} is the DC current which cause the inductance drop to Li.
3. I_{rms} is the DC current which cause the surface temperature of the part increase less than 45°C.
4. Operating temperature : -20°C to 105°C (including self-temperature rise).



DELTA ELECTRONICS, INC.

(TAOYUAN PLANT CPBG) 252, SAN YING ROAD, KUEISAN INDUSTRIAL ZONE, TAOYUAN SHIEN, 333, TAIWAN, R.O.C.
 TEL: 886-3-3591968; FAX: 886-3-3591991
<http://www.deltaww.com>