



PRODUCT SPECIFICATION

REV A January 2011

Oscilent Controlled Document

Ordering Code / Part Number	Product Description
813-IF84.0M-26A	84.0 MHz IF SAW Filter 26.2 MHz Bandwidth

Specification Contents

- o Mechanical Dimensions
- o Test Circuit
- o Maximum Ratings
- o Electrical Specification
- o Frequency Response
- o Smith Chart
- o VSWR

Notes

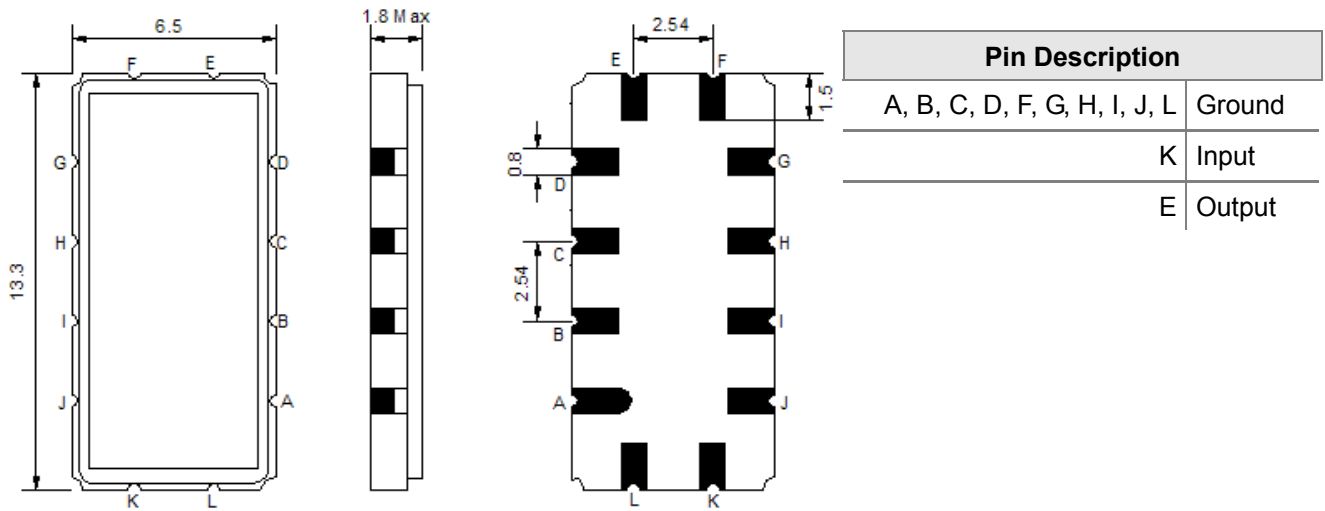
- o Electrostatic Sensitive Device (ESD) 
- o Avoid excessive ultrasonic exposure
- o Solderability compatible with JEDEC J-STD-020C Pb-free process, 260°C peak reflow temperature
- o This product complies with EU directive 2002/95/EC (RoHS compliance)



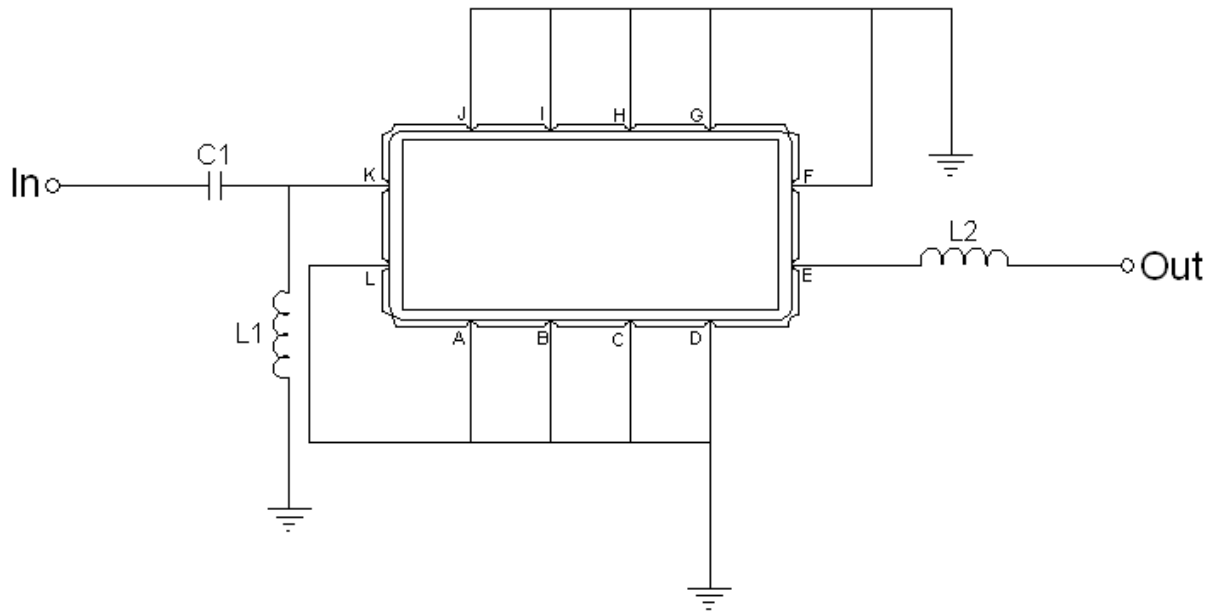
Oscilent Corporation
Telephone: 1.949.252.0522
Fax: 1.949.252.0522
Email: sales@oscilent.com



Mechanical Dimensions (mm)



Test Circuit



Test Fixture & Values	
Input	L1=120 nH, C1=51 pF
Output	L2=180 nH
Source/Load Impedance	50 Ω



Maximum Ratings

Parameters Description	Unit	Minimum	Typical	Maximum
Operating Temperature Range	°C	0		70
Storage Temperature Range	°C	-30	-	80
Maximum DC Voltage	V	-	-	10
Maximum Input Power	dBm	-	-	10
Source Impedance (single ended) ⁽¹⁾	Ω	-	50	-
Load Impedance (single ended) ⁽¹⁾	Ω	-	50	-

Notes: With Matching Network (Ref. Testing Environment Circuit as shown above).

Those impedances could be modified with different impedance values and/or structures, if necessary.

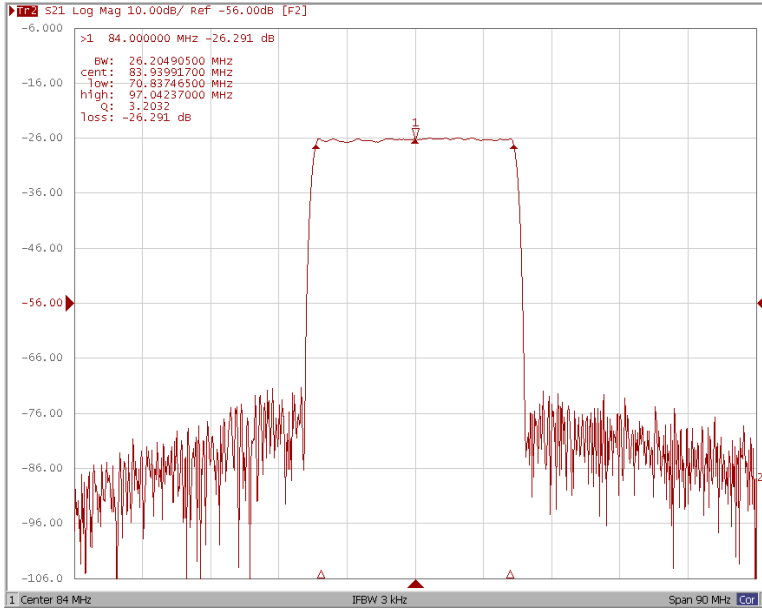
Electrical Specification

Parameters Description	Unit	Minimum	Typical	Maximum
Center Frequency (Fo)	MHz	-	84.0	-
Insertion Loss at Fo	dB	-	26.0	28.0
Group Delay Variation (Fo±12.5MHz)	ns	-	30	80
Absolute Delay	us	-	1.42	-
Passband Ripple (Fo±12.5MHz)	dB	-	0.65	1.0
Bandwidth at -1dB	MHz	24.96	26.2	-
Bandwidth at -10dB	MHz	-	27.6	27.9
Bandwidth at -20dB	MHz	-	28.2	28.5
Bandwidth at -30dB	MHz		28.6	28.9
Bandwidth at -45dB	MHz	-	28.9	-
Ultimate Rejection	dB	40	45	-
Temperature Coefficient of Frequency	ppm/°C		-72	

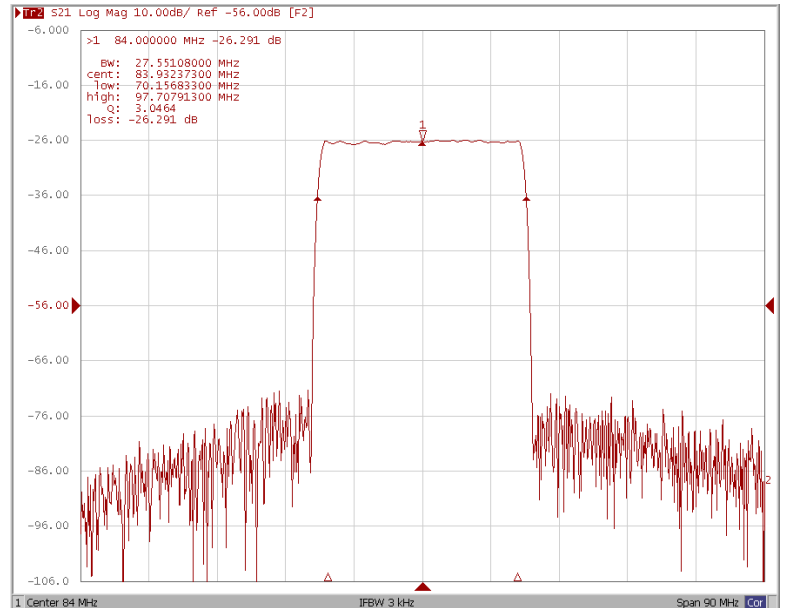


Frequency Response

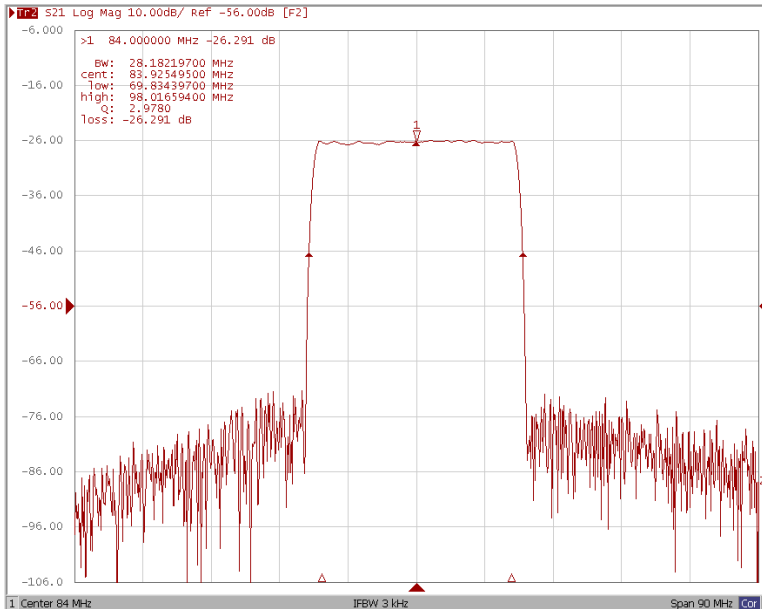
Bandwidth at -1.0 dB



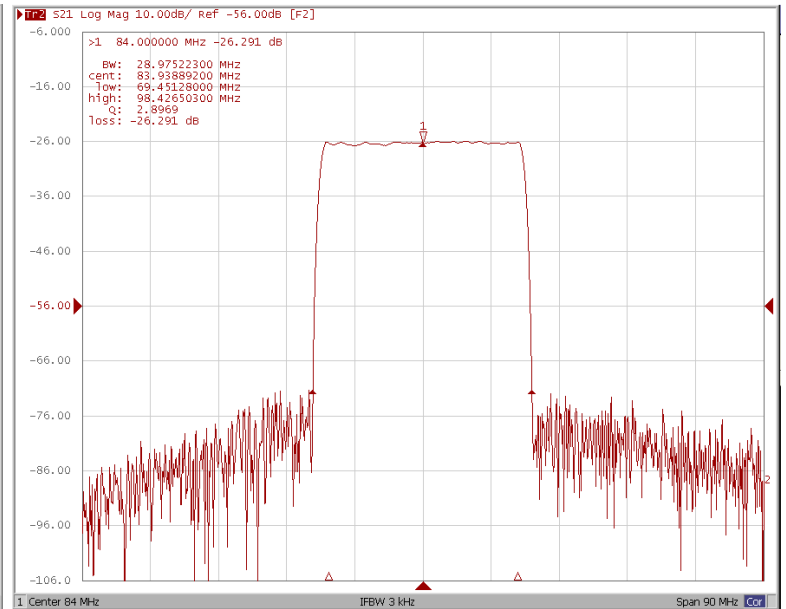
Bandwidth at -10.0 dB



Bandwidth at -20.0 dB

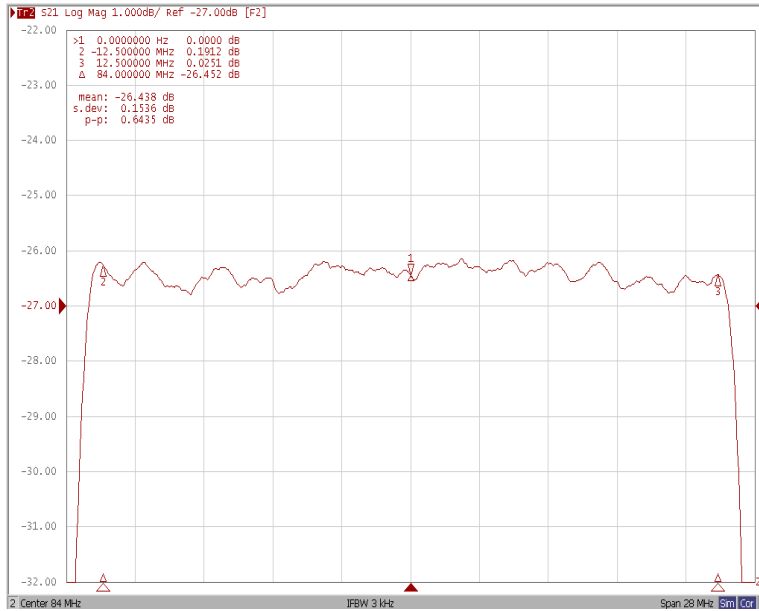


Bandwidth at -45.0 dB

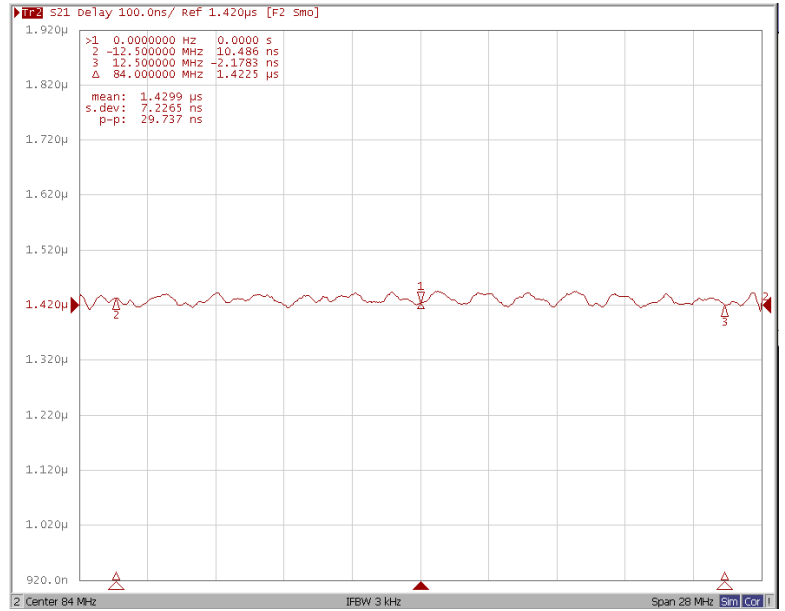




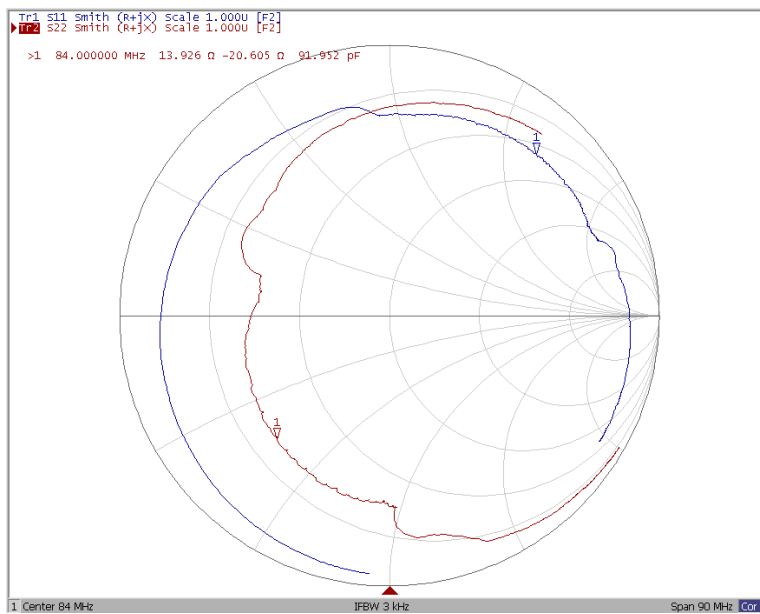
Ripple Variation Fo±12.5MHz



Group Delay Variation Fo±12.5MHz



Smith Chart





VSWR

