

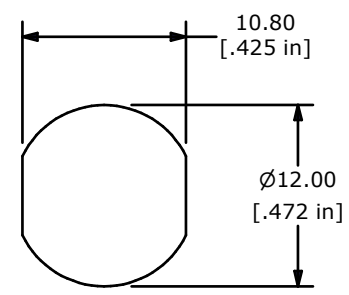
CIRCUIT: SPST
CONTACT CONFIGURATION
45° INDEXING

SWITCH FUNCTION		
POS 1	POS 2	POS 3
1-2	OFF	3-4

LEGEND

- = INDICATES KEY PULL POSSIBLE
- = DETENT POSITION

- NOTES:
1. ALL DIMENSIONS IN MM[INCH]
 2. GENERAL TOLERANCE: x.x= ± 0.4
x.xx= ± 0.25
 3. TERM. NOS. FOR REFERENCE ONLY.
 4. RATING: 1A @125VAC, 0.5A @250VAC
 5. CONTACT RESISTANCE: 10milli-OHMS
 6. DIELECTRIC STRENGTH: 1000 VAC-1Minute
 - ▲7. MATERIALS:
HOUSING: ZINC ALLOY W/CHROME PLATING
CYLINDER: ZINC ALLOY W/CHROME PLATING
TERMINAL AND CONTACTS: SILVER PLATED
KEYS (2) KEY CODE 1506: ZINC ALLOY, CHROME PLATING
 - 8.▲ DENOTES CRITICAL PARAMETER.
 9. 2002/95/EC (ROHS) COMPLIANT



RECOMENDED PANEL CUTOUT

C	19220	PART CHANGED FROM HT (HIGH TEMP)	7/23/10	BLR
B	19167	TITLE and RESIN CHANGE	6/28/10	BLR
A	17689	RELEASED FOR PRODUCTION	9/19/07	RC
REV	PCR NO	DESCRIPTION	DATE	BY

THE INFORMATION CONTAINED IN THIS DOCUMENT IS PROPRIETARY TO E-SWITCH AND IS NOT TO BE COPIED OR TRANSFERRED

TITLE KO132D1506

SCALE 2=1	DATE 7/23/2010	DR RC	DWG K400121	REV C
-----------	----------------	-------	-------------	-------