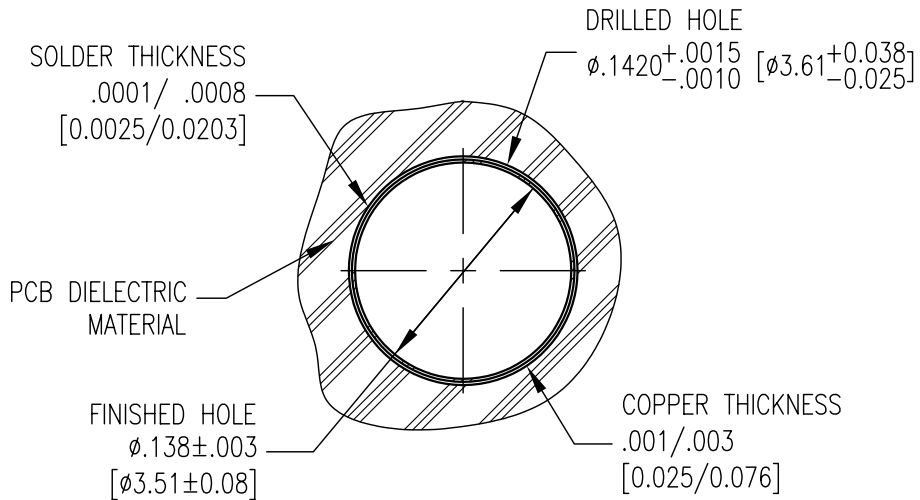
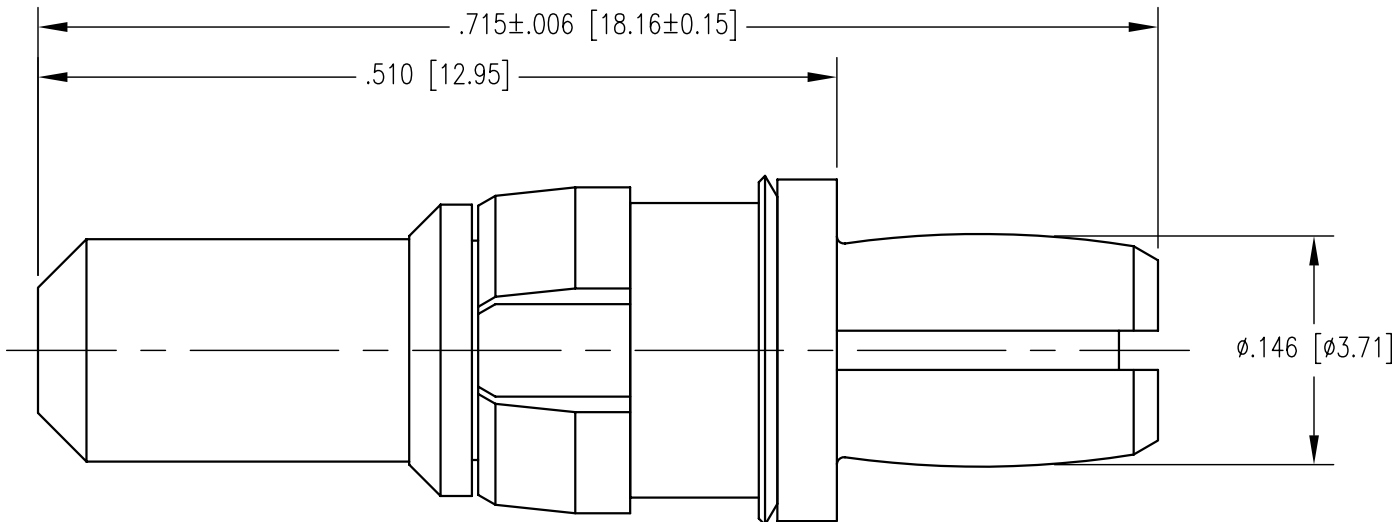


DWG. NO. SD220-010-0064G

REV	DESCRIPTION	BY DATE	APPD
A	RELEASE PER ECR 7917	JEM 11/10/03	JED



PLATED THRU HOLE REQUIREMENTS

NOTES:

- MATERIALS:
 BODY: PHOSPHOR BRONZE PER ASTM B103
 CLIP RING: BERYLLIUM COPPER PER ASTM B196
 INSERT: SILICONE RUBBER PER ZZ-R-765
 SPRING WASHER: PHOSPHOR BRONZE PER ASTM B103
- FINISH:
 BODY: .000030 MIN. GOLD PER ASTM B488 OVER
 .000050 MIN. NICKEL PER AMS-QQ-N-290
 SPRING WASHER: .000005 MIN. GOLD PER ASTM B488 OVER
 .000050 MIN. NICKEL PER AMS-QQ-N-290
 CLIP RING: .000100 MIN. NICKEL PER AMS-QQ-N-290 OVER
 COPPER FLASH
- CURRENT RATING: 40 AMPS AT AN AMBIENT EQUIPMENT OPERATING TEMPERATURE OF 65°C OR LESS.
- COMPLIANT INSERTION: 75 LBS. MAX.
 RETENTION: 20 LBS. MIN.

PER ASME Y14.5M-1994 UNLESS OTHERWISE SPECIFIED: DIMENSIONS ARE IN INCHES [MM]			
TOLERANCES:			
DECIMALS	.xx ± .01/0.254		
	.xxx ± .005/0.127		
ANGLES	± 2'	SCALE: 8:1	
CUSTOMER DRAWING			
DRAWN	DATE	CHECKED	DATE
JEM	07/09/03	CWB	07/11/03
APPROVED	DATE	APPROVED	DATE
JED	07/09/03	MG	7/14/03

NORTHROP GRUMMAN				
Winchester Electronics 62 Barnes Industrial Road North Wallingford, CT 06492				
TITLE				
RDM COMPLIANT POWER PLUG				
A	SD220-010-0064G	SHT.	OF	REV.
		1	1	A