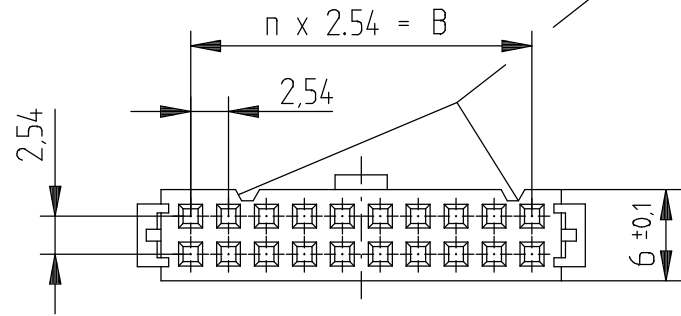
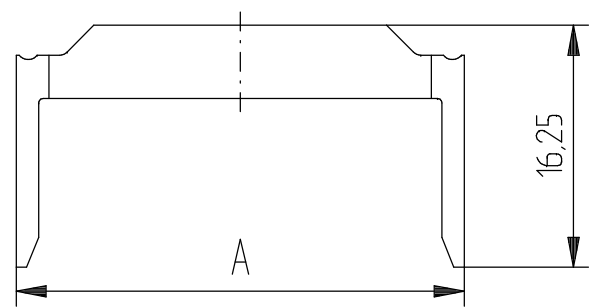
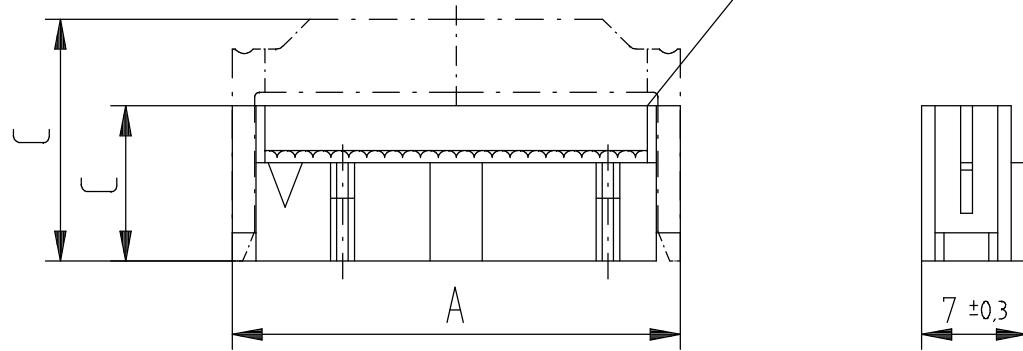


Ausnehmungen für Polungselement, Anzahl siehe Tabelle  
*recesses for polarisation element, number see table*



Drahtführung vormontiert  
*wire guide pre assembled*



Zugentlastungsbügel  
*Strain relief clamp*

Darstellung 20 Pol / drawing for 20 contacts  
 Anschlussart : Schneidklemme / Terminal Type : insulation displacement  
 Bauart : 07 / Type : 07  
 Anforderungsstufe : 2 / Class : 2  
 Aufdruck : ohne / Logo : without  
 Flachbandkabel AWG 28 ( 0,08mm<sup>2</sup> ) AWG 26 ( 0,14mm<sup>2</sup> )  
 ribbon cable AWG 28 ( 0,08mm<sup>2</sup> ) AWG 26 ( 0,14mm<sup>2</sup> )  
 Fehlende Masse und Angaben gemäss MIL - C 83503/DIN 41651  
 Missing information and dimensions according to MIL - C 83503/DIN 41651

100702170001	34	47,8	40,64	10.5	16.3	2	ja / yes
Ident.-Nr.: <i>Part No.:</i>	Polzahl <i>No. of Contacts</i>	A ±0.1	B	C ±0.1 <i>ohne/without mit/with</i> Zugentlastungsbügel <i>Strain relief clamp</i>		Anzahl der Ausnehmungen <i>number of recesses</i>	Zugentlastungsbügel beiliegend <i>Strain relief clamp included</i>

Consider protection memo from DIN 34

Information:	Tolerances		Scale	2:1
All rights reserved. Only for information. To insure that this is the latest version of this drawing, please contact one of the ERNI companies before using.	Subject to modification without prior notice. Drawing will not be updated.	All Dimensions in mm	Designation LPV-Federleiste m. Zugentlast. <i>LPV-Female Conn. strain relief</i>	
	www.ERNI.com	100702170001		K3
b Index	Date	M:00071325.SZA	LPVF	