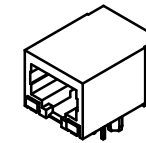
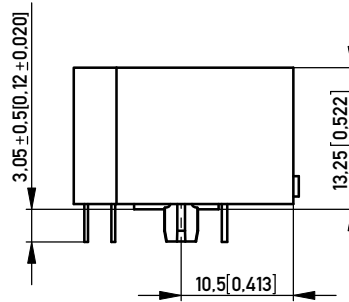
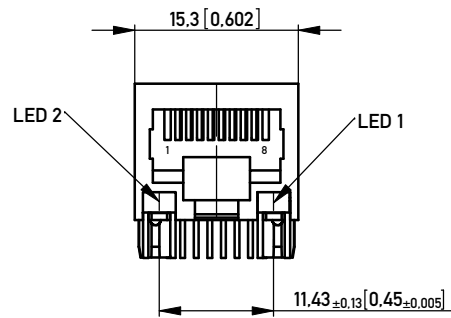
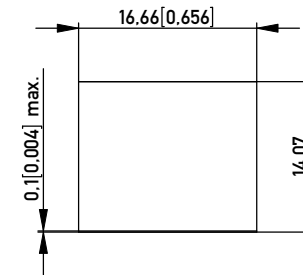
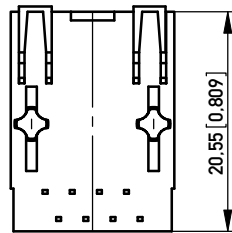


RECOMMENDED PANEL CUTOUT
EMPFÖHLENER FRONTPLATTEN AUSSCHNITT



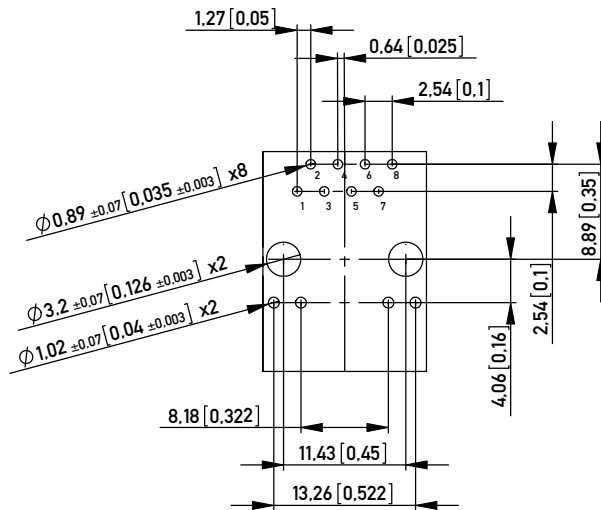
MATERIALS AND FINISH
 HOUSING: GLASS FILLED POLYESTER UL 94 V-0 BLACK
 CONTACTS: PHOSPHOR BRONZE
 CONTACT FINISH: Au, 0.8 μm (30 μin) OVER Ni
 TERMINAL FINISH: Sn MATTE
 LED LENS: EPOXY
 MECHANICAL CHARACTERICS
 DURABILITY: 1000 MATING CYCLERS
 ELECTRICAL CHARACTERISTICS
 CONTACT RESISTANCE: 30 MILLIOHMS MAX
 OPERATING TEMPERATURE: 0°C TO 70°C

No. Ident-Nr.	LED 2 left LED 2 links	LED 1 right LED 1 rechts	LED Code
203292	green	yellow	L2

Information: Schematic No. M3D01		Tolerances ±0.2 mm (±0.008 inch) if not specified		Scale 2:1
All rights reserved. Only for Information. To ensure that this is the latest version of this drawing, please contact one of the ERNI companies before using.		Subject to modification without prior notice. Drawing will not be updated.		Designation MOD-JACK- MJIM 8C8T, 1x1, LED, NON-SHIELDED
		www.ERNI.com		203292
a	01.09.2010			1 (1/2)
Index	Date			A3
				Class MJIM

Copyright by ERNI GmbH. Proprietary notice pursuant to ISO 16016 to be observed.

RECOMMENDED PCB LAYOUT - COMPONENT SIDE VIEW
 EMPFOHLENES LEITERPLATTEN-LAYOUT - BESTÜCKUNGSSEITE
 ALL TOLERANCES ±0.05 UNLESS NOTED



MAGNETICS SPECIFICATIONS @ 25°C

AUTO MDIX COMPATIBLE

URNS RATIO:

(P1-P2 : J1-J2) 1CT : 1 ±3%

(P3-P6 : J3-J6) 1CT : 1 ±3%

OCL(100 KHz, 0.1 V, 8 mA)

(P1-P2 ; P3-P6) 350 µH MIN

DCR (P1-P2, P3-P6) 0,9 Ohms MAX

INSERTION LOSS:

0.1 MHz-100 MHz -1.1 dB MAX

RETURN LOSS:

0.5 MHz-30 MHz -18 dB MIN

40 MHz -15.5 dB MIN

50 MHz -13.6 dB MIN

60 MHz-80 MHz -12 dB MIN

CROSSTALK:

1 MHz-100MHz -40 dB TYP

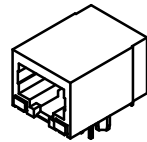
COMMON MODE REJECTION

0.1 - 30 MHz -50 dB TYP

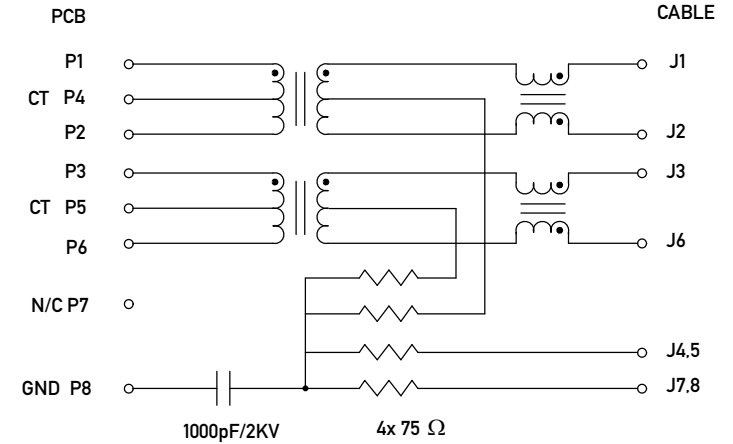
30 - 60 MHz -40 dB TYP

60 - 100 MHz -35 dB TYP

ISOLATION 1500 Vrms



ELECTRICAL SCHEMATIC M3D01
 ELEKTRISCHER SCHALTPLAN



COLOR FARBE	Vf TYP	Vf MAX	If mA	CIRCUIT DIAGRAM SCHALTPLAN
yellow	2.1	2.5	20	
green	2.2	2.5	20	

Information:		Tolerances ±0.2 mm (±0.008 inch) if not specified		Scale 2:1
All rights reserved. Only for Information. To ensure that this is the latest version of this drawing, please contact one of the ERNI companies before using.		Subject to modification without prior notice. Drawing will not be updated.		Designation MOD-JACK- MJIM 8C8T.1x1, LED, NON-SHIELDED
ERNI www.ERNI.com		203292		1 (2/2) A3
a	01.09.2010	Class MJIM		
Index	Date			

Copyright by ERNI GmbH.
 Proprietary notice pursuant to ISO 16106 to be observed.