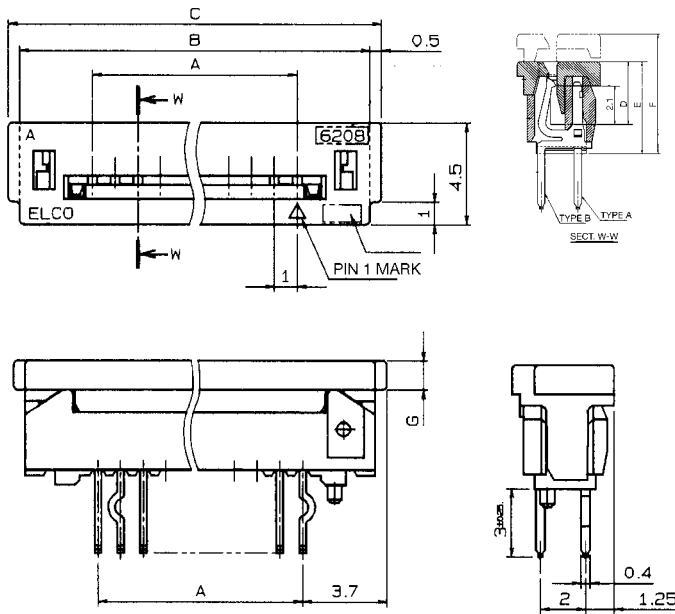


1.00mm Pitch

Series 6208

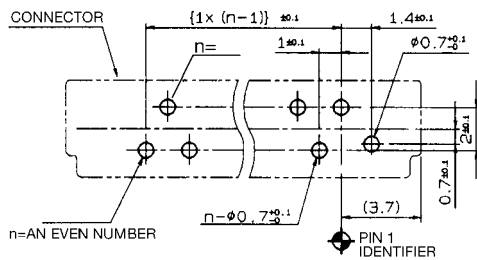


ZIF Straight Through-Hole

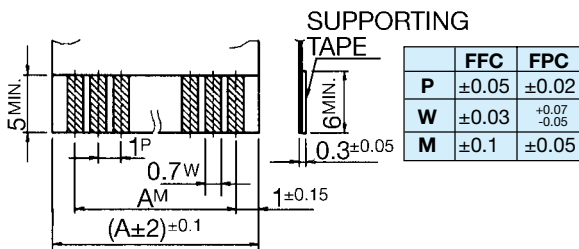


Specifications

- Number of Contacts – 5-30
- Tray Packaged, Tube or Tape & Reel
- Voltage – 50 V
- Current Rating – 1.0 amp max.
- Dielectric Withstanding Voltage – 500V RMS min.
- Operating Temperature – (-30°C - +85°C)
- Contact Material – phosphor bronze (tin-lead plated)
- Slider Material – PPS (UL 94 V-O)
- Insulator Material – glass-filled nylon, PPS
- FFC/FPC Thickness – 0.3 ±0.05 mm (0.012 ±0.002")
- PCB Thickness – 1.2-1.6mm .047 ~ .063"
- Profile Height – See “E” dimension



MOUNTING LAYOUT



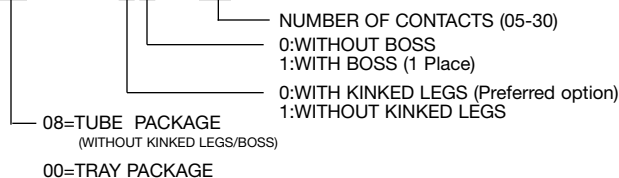
FFC, FPC SPECIFICATION

PART NUMBER	NO. OF CONTACTS	A	B	C	D	E	F	G	QTY. PER TUBE	QTY. PER TRAY
XX 6208 XX0 105 001	5	4.0	10.4	11.4	3.4	5.0	6.5	.08	42	310
106	6	5.0	11.4	12.4	▲	▲	▲	▲	38	290
107	7	6.0	12.4	13.4					35	260
108	8	7.0	13.4	14.4					33	250
109	9	8.0	14.4	15.4					31	230
110	10	9.0	15.4	16.4					29	220
111	11	10.0	16.4	17.4					27	200
112	12	11.0	17.4	18.4					26	190
113	13	12.0	18.4	19.4					24	180
114	14	13.0	19.4	20.4					23	170
115	15	14.0	20.4	21.4					22	160
116	16	15.0	21.4	22.4					21	150
117	17	16.0	22.4	23.4					20	150
118	18	17.0	23.4	24.4					19	140
119	19	18.0	24.4	25.4	▼	▼	▼	▼	18	140
120	20	19.0	25.4	26.4	3.4	5.0	6.5	0.8	18	130
121	21	20.0	26.4	27.4	3.6	5.2	6.7	1.0	17	130
122	22	21.0	27.4	28.4	▲	▲	▲	▲	17	120
123	23	22.0	28.4	29.4	▲	▲	▲	▲	16	120
124	24	23.0	29.4	30.4	▼	▼	▼	▼	16	110
125	25	24.0	30.4	31.4	3.6	5.2	6.7	1.0	15	110
126	26	25.0	31.4	32.4	3.9	5.5	7.0	1.3	15	110
127	27	26.0	32.4	33.4	▲	▲	▲	▲	14	100
128	28	27.0	33.4	34.4	▼	▼	▼	▼	14	100
129	29	28.0	34.4	35.4	▼	▼	▼	▼	13	100
XX 6208 XX0 130 001	30	29.0	35.4	36.4	3.9	5.5	7.0	1.3	13	90

(Dimensions: mm)

ORDERING CODE

XX 6208 XX0 1XX 001

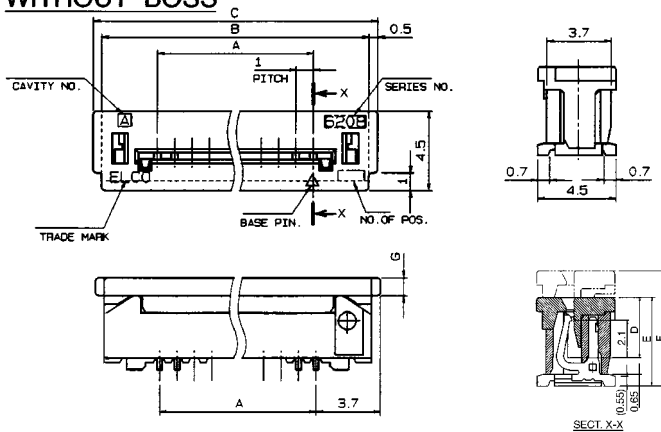


1.00mm Pitch

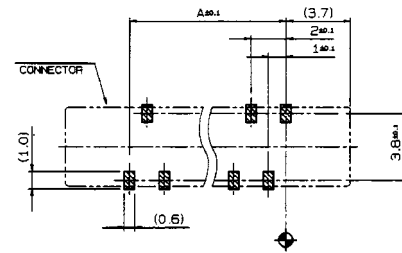
Series 6208



WITHOUT BOSS

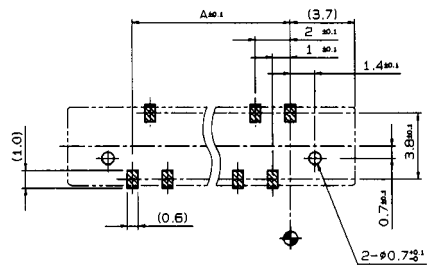
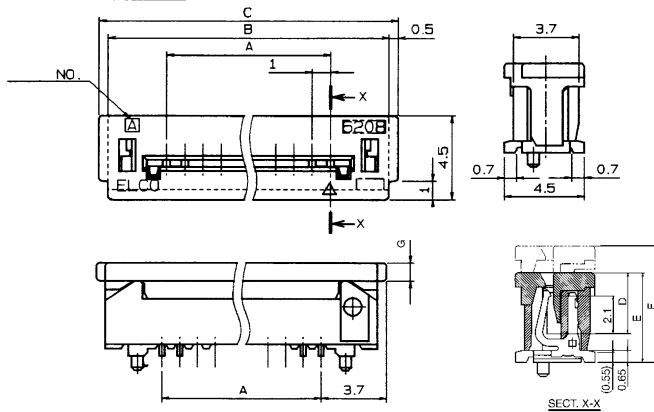


ZIF Straight SMT

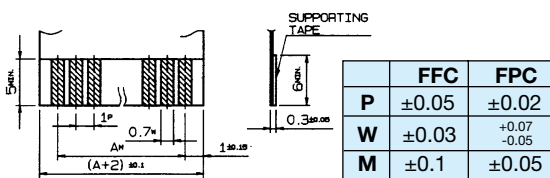


MOUNTING LAYOUT

WITH BOSS



MOUNTING LAYOUT



FFC, FPC SPECIFICATION

ORDERING CODE

XX 6208 XXX OXX XXX

00=TRAY
08=TUBE
PACKAGE

FLEX TYPE
000=STANDARD
009=CARBON PASTE

VARIATION CODE

+500=SMT WITHOUT BOSS
520=SMT WITH BOSS (2 Places)

NUMBER OF CONTACTS (05-30)

PART NUMBER	NO. OF CONTACTS	A	B	C	D	E	F	G	QTY. PER TUBE	QTY. PER TRAY
XX 6208 XXX 005 XXX	5	4.0	10.4	11.4	3.4	5.0	6.5	0.8	42	310
006	6	5.0	11.4	12.4					38	290
007	7	6.0	12.4	13.4					35	260
008	8	7.0	13.4	14.4					33	250
009	9	8.0	14.4	15.4					31	230
010	10	9.0	15.4	16.4					29	220
011	11	10.0	16.4	17.4					27	200
012	12	11.0	17.4	18.4					26	190
013	13	12.0	18.4	19.4					24	180
014	14	13.0	19.4	20.4					23	170
015	15	14.0	20.4	21.4					22	160
016	16	15.0	21.4	22.4					21	150
017	17	16.0	22.4	23.4					20	150
018	18	17.0	23.4	24.4					19	140
019	19	18.0	24.4	25.4					18	140
020	20	19.0	25.4	26.4	3.4	5.0	6.5	0.8	18	130
021	21	20.0	26.4	27.4	3.6	5.2	6.7	1.0	17	130
022	22	21.0	27.4	28.4					16	120
023	23	22.0	28.4	29.4					16	120
024	24	23.0	29.4	30.4					15	110
025	25	24.0	30.4	31.4	3.6	5.2	6.7	1.0	15	110
026	26	25.0	31.4	32.4	3.9	5.5	7.0	1.3	-	110
									-	100
028	28	27.0	33.4	34.4	3.9	5.5	7.0	1.3	-	100
									-	100
XX 6208 XXX 030 XXX	30	29.0	35.4	36.4	3.9	5.5	7.0	1.3	-	90

*NOTE: Elco Standard for the 500 variation is Tape and Reel. See page 37 for ordering information.

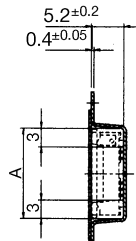
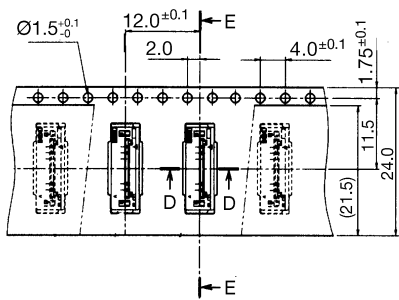
(Dimensions: mm)

1.00mm Pitch

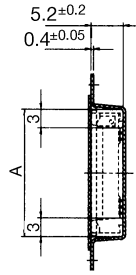
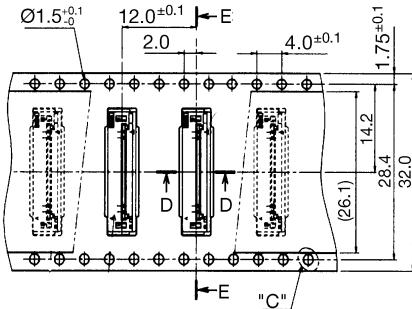
Series 6208



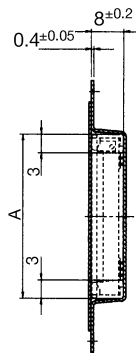
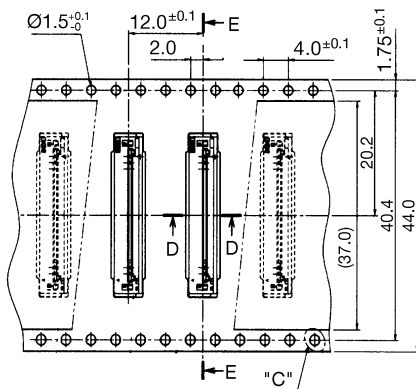
Tape and Reel Specification



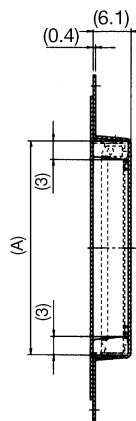
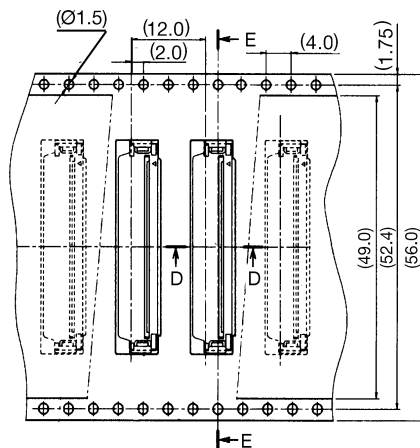
SECT. E-E



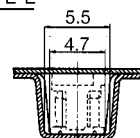
SECT. E-E



SECT. E-E



SECT. E-E



SECT. D-D

Tape Width: 24mm

PART NUMBER	NO. OF CONTACTS	A	QTY. PER REEL
00 6208 505 110 XXX	5	11.6	1000
↑ 506 ↑	6	12.6	1000
↑ 507 ↑	7	13.6	1000
↓ 508 ↓	8	14.6	1000
↓ 509 ↓	9	15.6	1000
00 6208 510 110 XXX	10	16.6	1000

Tape Width: 32mm

PART NUMBER	NO. OF CONTACTS	A	QTY. PER REEL
00 6208 511 210 XXX	11	17.6	1000
↑ 512 ↑	12	18.6	1000
↑ 513 ↑	13	19.6	1000
↓ 514 ↓	14	20.6	1000
↓ 515 ↓	15	21.6	1000
00 6208 516 210 XXX	16	22.6	1000

Tape Width: 44mm

PART NUMBER	NO. OF CONTACTS	A	QTY. PER REEL
00 6208 517 310 XXX	17	23.6	1000
↑ 518 ↑	18	24.6	1000
↑ 519 ↑	19	25.6	1000
↑ 520 ↑	20	26.6	1000
↑ 521 ↑	21	27.6	1000
↑ 522 ↑	22	28.6	1000
↑ 523 ↑	23	29.6	1000
↓ 524 ↓	24	30.6	1000
↓ 525 ↓	25	31.6	1000
00 6208 526 310 XXX	26	32.6	1000

Tape Width: 56mm

PART NUMBER	NO. OF CONTACTS	A	QTY. PER REEL
00 6208 528 410 XXX	28	34.7	1000
00 6208 530 410 XXX	30	36.7	1000

(Dimensions: mm)

ORDERING CODE

00 6208 5XX X10 XXX

NUMBER OF CONTACTS (05-30)

000 STANDARD
009 CARBON PASTE

VARIATION CODE

- 1: EMBOSS 24.0mm
- 2: EMBOSS 32.0mm
- 3: EMBOSS 44.0mm
- 4: EMBOSS 56.0mm

SMT W/O BOSS
ON 1000 PIECE TAPE AND REEL