

TST

TAI SAW TECHNOLOGY CO., LTD.



TAI-SAW TECHNOLOGY CO., LTD.

No. 3, Industrial 2nd Rd., Ping-Chen Industrial District,
Taoyuan, 324, Taiwan, R.O.C.

TEL: 886-3-4690038 FAX: 886-3-4697532

E-mail: tstsales@mail.taisaw.com Web: www.taisaw.com

SAW Filter 864 MHz

MODEL NO.:TA1622A

REV. NO : 1.0

A. MAXIMUM RATING:

1. Input Power Level: 10 dBm
2. DC Voltage : 6V
3. Operating Temperature: -40°C to +85°C
4. Storage Temperature: -40°C to +85°C



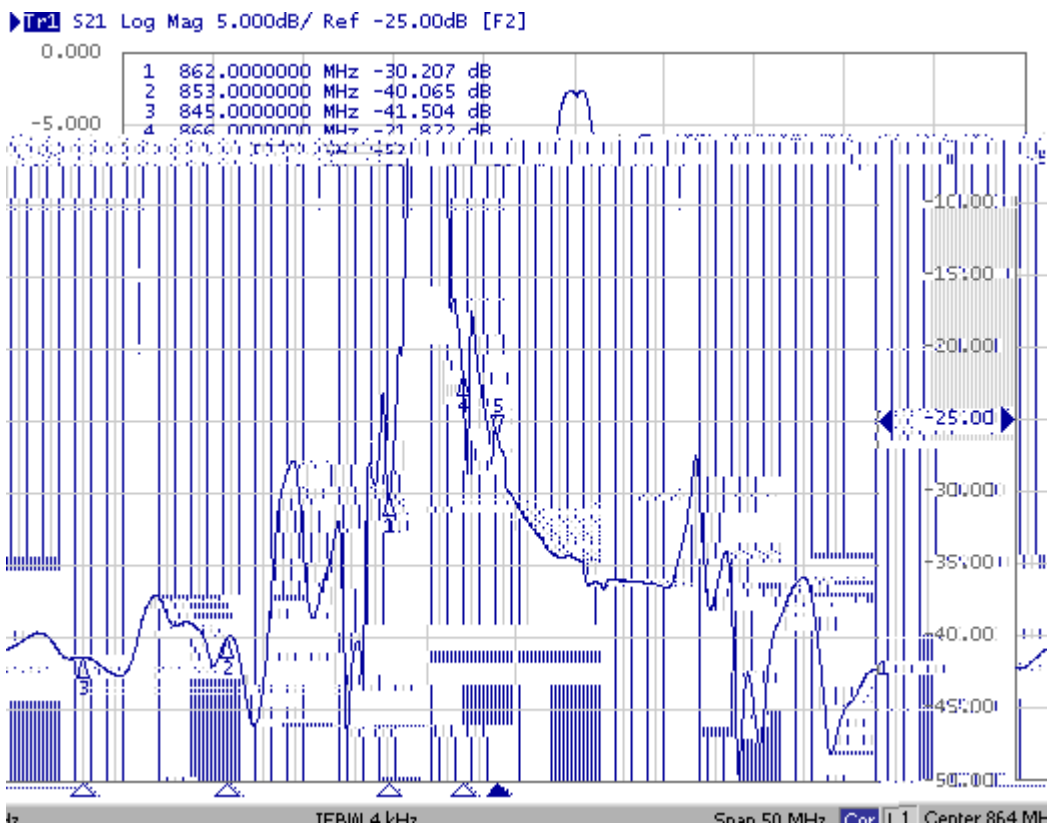
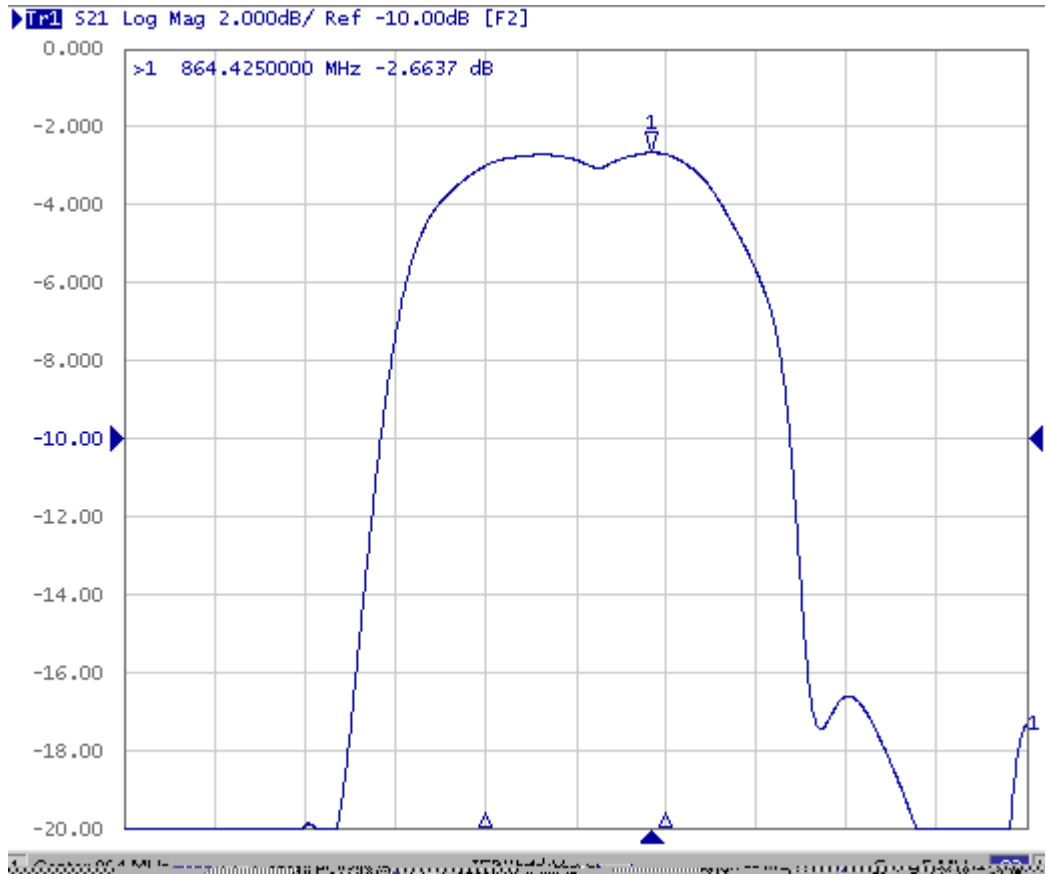
B. ELECTRICAL CHARACTERISTICS:

Item	Unit	Min.	Typ.	Max.
Center frequency Fc	MHz	-	864	-
3dB BW	MHz	-	1.92	-
Minimum insertion loss IL(min)				
Incl. loss of matching elements(Q=93) *1)	dB	-	2.7	3.7
Exclude loss in matching elements *2)	dB	-	2.4	3.4
Passband (relative to IL_{min}) *1) 863.50 ~ 864.50MHz	dB	-	0.4	3.0
Attenuation (relative to IL_{min}) *1)				
10.000 ~ 780.00 MHz	dB	37	44	-
780.00 ~ 845.00 MHz	dB	30	37	-
845.00 ~ 853.00 MHz	dB	28	35	-
853.00 ~ 862.00 MHz	dB	16	21	-
866.00 ~ 868.00 MHz	dB	10	15	-
868.00 ~ 873.00 MHz	dB	16	23	-
873.00 ~ 891.00 MHz	dB	18	25	-
891.00 ~ 907.00 MHz	dB	32	39	-
907.00 ~ 1000.0 MHz	dB	34	41	-
1000.0 ~ 2000.0 MHz	dB	44	51	-
2000.0 ~ 2500.0 MHz	dB	55	65	-
Temperature coefficient (TCf)	ppm/c*2	-	0.032	-
Impedance at Fc, Input Zin = Rin//Cin Zs	Ω		98 //0.91pF	
Impedance at Fc, Output Zout = Rout//Cout ZL	Ω		96 //0.95pF	

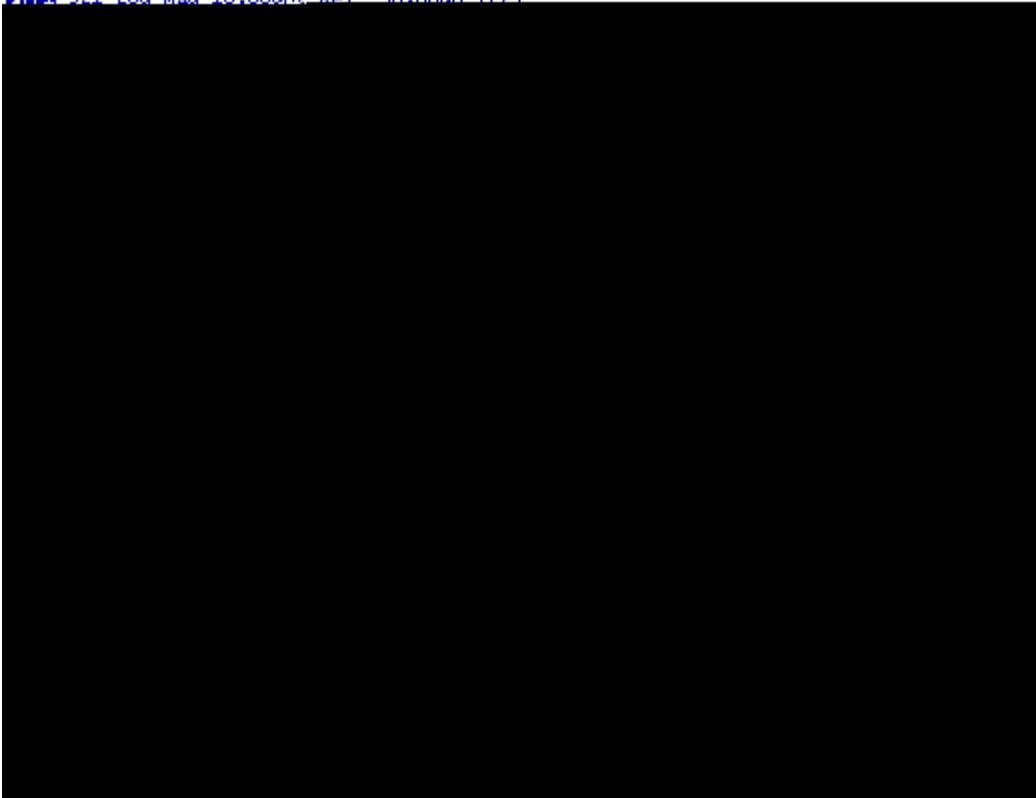
*1) : The matching circuit is real by actual passive components.
0805 Coilcraft CS series chip conductor is used for inductor.
0402 muRata GRM series is used for capacitor.

*2) : The matching circuit is ideal by simulation.

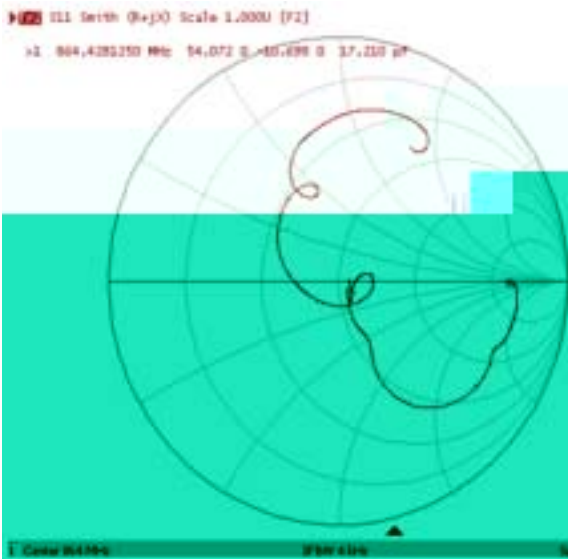
C. Frequency Characteristics :



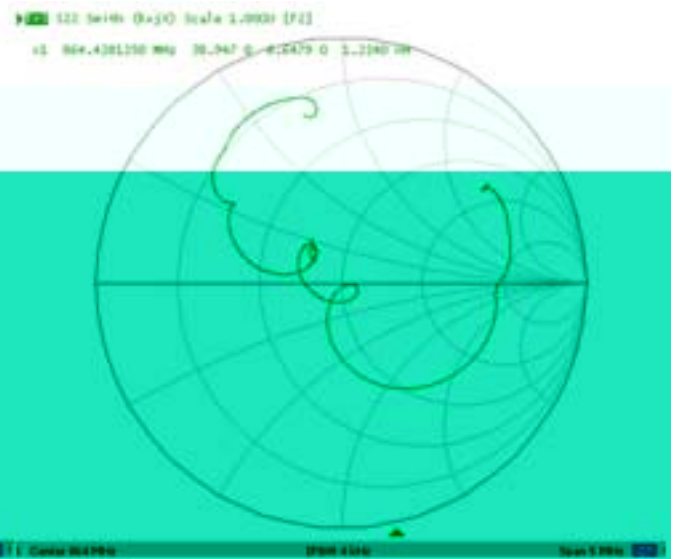
S21 Log Mag 10.00dB/ Ref -50.00dB [F2]



S11 Smith

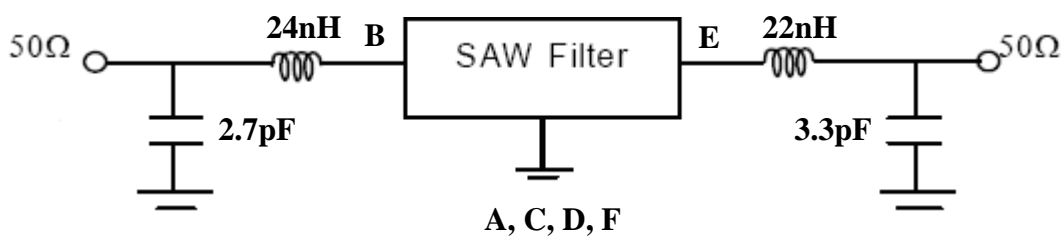


S22 Smith

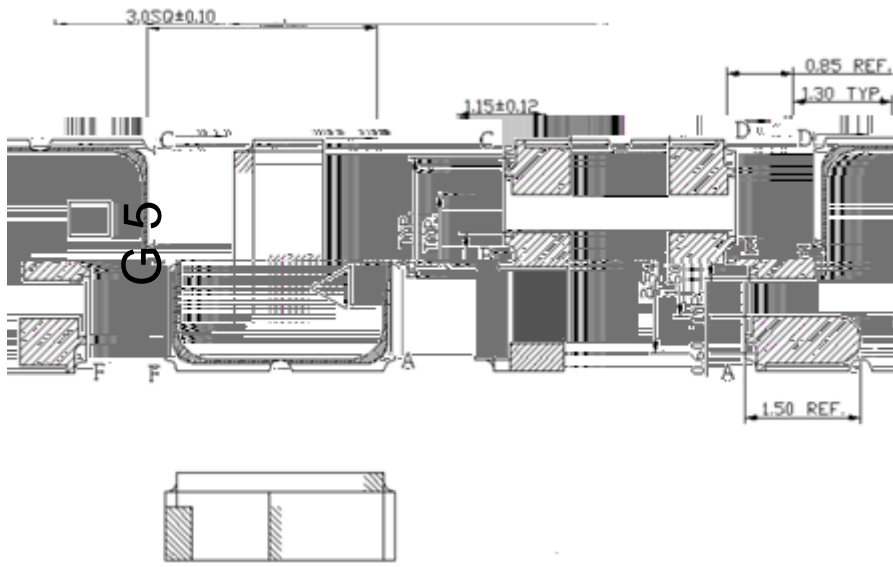


D. MEASUREMENT CIRCUIT:

The matching circuit is real by actual passive components.



E.OUTLINE DRAWING):



- A : Input ground (recommended) or Input
- B : Input (recommended) or Input ground
- D : Output ground (recommended) or Output
- E : Output (recommended) or Output ground
- C、 F: Case Ground

: Year Code

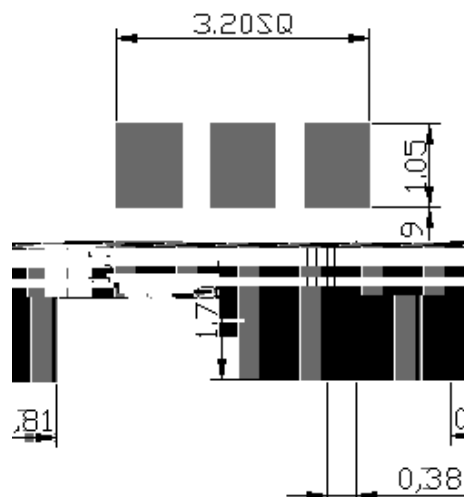
: Data Code(Follow the table provided by planer each year)

Unit : mm

WK01	WK02	WK03	WK04	WK05	WK06	WK07	WK08	WK09	WK10	WK11	WK12	WK13
A	B	C	D	E	F	G	H	I	J	K	L	M
WK14	WK15	WK16	WK17	WK18	WK19	WK20	WK21	WK22	WK23	WK24	WK25	WK26
N	O	P	Q	R	S	T	U	V	W	X	Y	Z
WK27	WK28	WK29	WK30	WK31	WK32	WK33	WK34	WK35	WK36	WK37	WK38	WK39
a	b	c	d	e	f	g	h	i	j	k	l	m
WK40	WK41	WK42	WK43	WK44	WK45	WK46	WK47	WK48	WK49	WK50	WK51	WK52
n	o	p	q	r	s	t	u	v	w	x	y	z

*3) The recommended pin configuration offers better suppression of electrical crosstalk.

F. PCB Footprint:

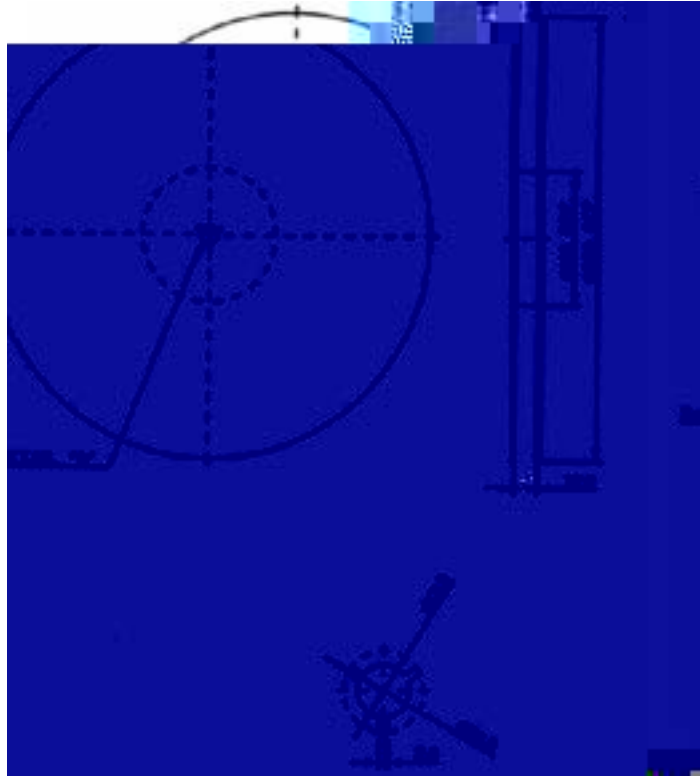


TAT-SAW TECHNOLOGY CO., LTD.

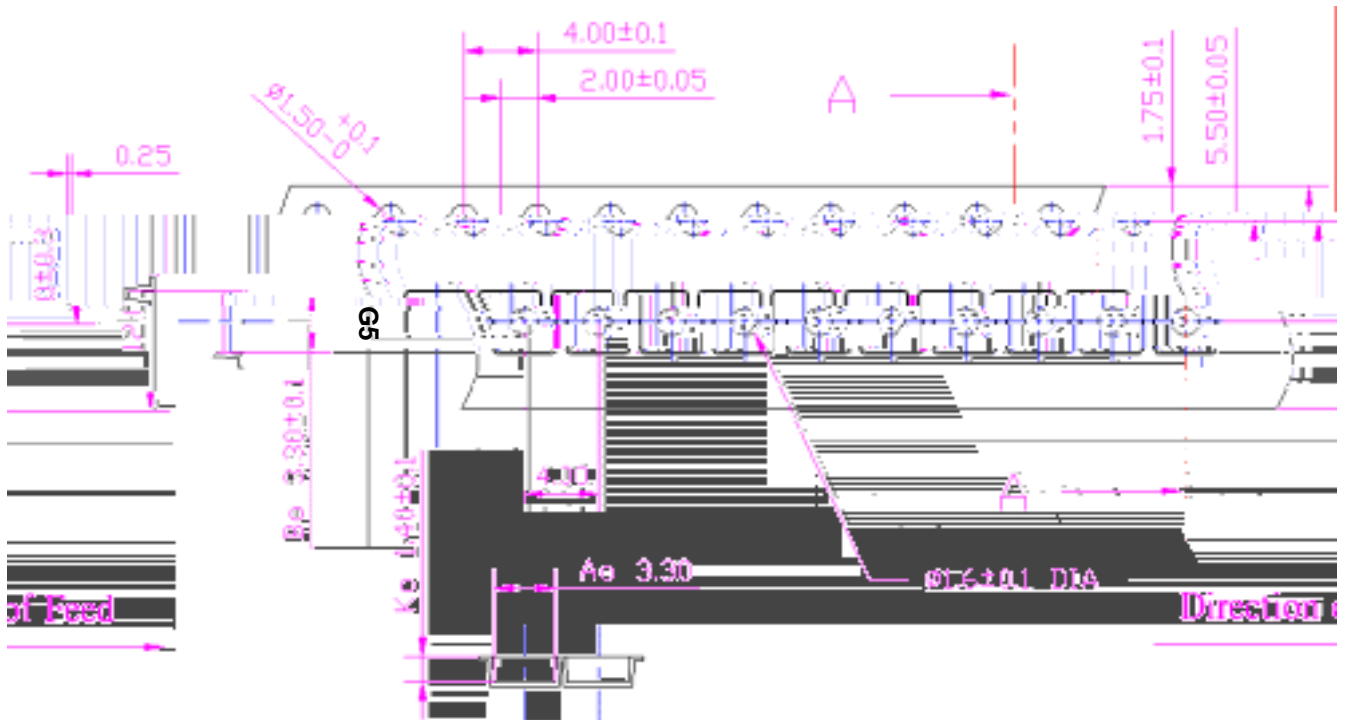
G. PACKING:

1. REEL DIMENSION

(Please refer to FR-75D10 for packing quantity)



2. TAPE DIMENSION



H. RECOMMENDED REFLOW PROFILE:

