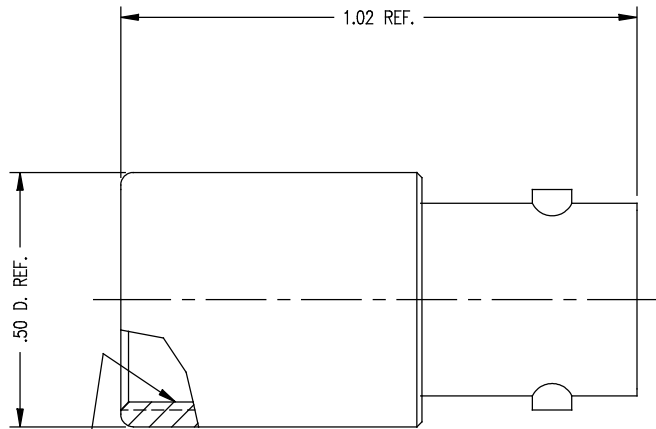


DASH NO.	M CODE	MADE FROM
----------	--------	-----------

GSD

KC-89-193-M06

REVISIONS	
ISSUE	CHANGES
3	CN 36903 C REDRAWN KH 05/06/96



7/16-28 UNEF-2B TH'D
.156 MIN. FULL TH'D

NOTES:

- MARK PACKAGE: KINGS KC-89-193-M06.
- INTERFACE PER MIL-STD-348, FIG. 301-2.
- MATERIALS:
CENTER CONTACT: BER. COPPER, ASTM-B-196
INSULATORS: TEFLON, ASTM-D-4894
ALL OTHER METAL PARTS: BRASS, ASTM-B16
- FINISHES:
CENTER CONTACTS: GOLD PLATE PER MIL-C-45204
ALL OTHER METAL PARTS: KINGS TARNISH RESISTANT NICKEL FINISH (TR-5)
- ELECTRICAL CHARACTERISTICS:
FREQUENCY RANGE: DC TO 4 GHz.
WORKING VOLTAGE: 500 VRMS
NOMINAL IMPEDANCE: 50 OHMS

KAM6598

SCALE 4:1	
APPROX SURFACE AREA	
USED ON	
REF: POMONA 026-001-053 REV. E	
BODY ASSY, BNC, F	
DRAWN KH	DATE 05/06/96
DESIGN LI	DATE 05/07/96
APPR.	DATE

KINGS
ELECTRONICS CO., INC.
TUCKAHOE, NEW YORK 10707

GSD

KC-89-193-M06