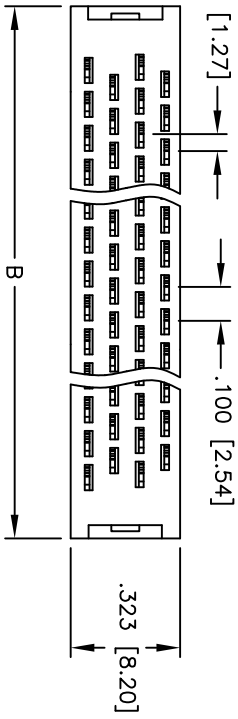
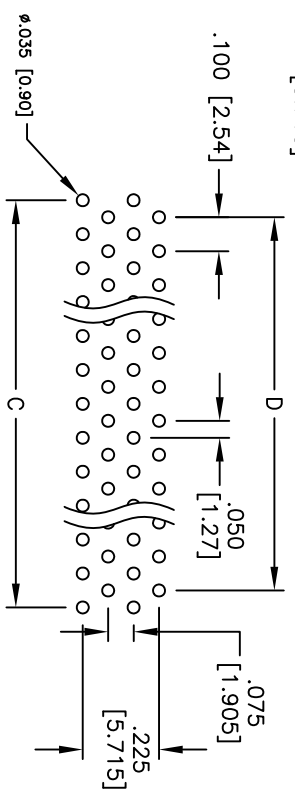
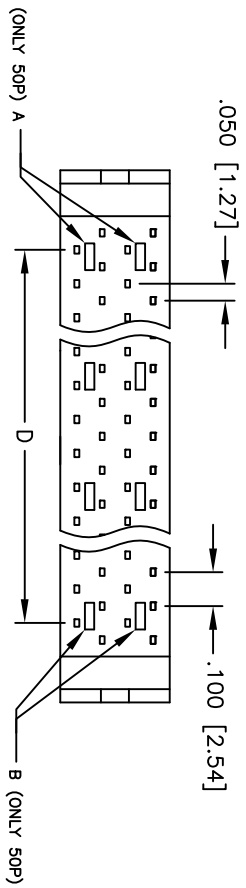
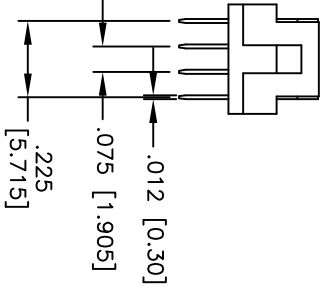
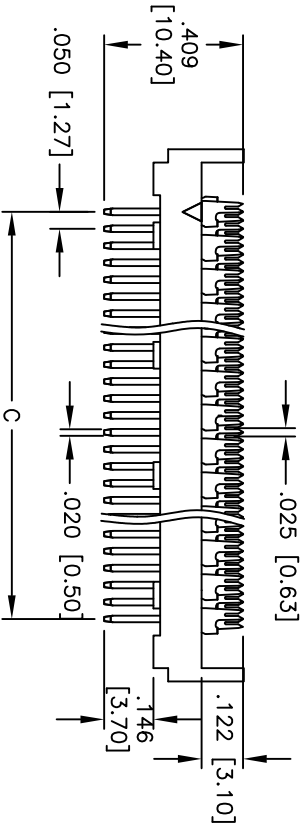


Rev	AWO #	Description	Date	Appr
-		RELEASED	1/15/10	

APPROVED: _____
 DATE: _____ TITLE: _____



POSITION	A	B	C	D
26	.890 [22.61]	.969 [24.61]	.600 [15.24]	.500 [12.70]
30	.990 [25.15]	1.069 [27.15]	.700 [17.78]	.600 [15.24]
34	1.090 [27.69]	1.169 [29.69]	.800 [20.32]	.700 [17.78]
40	1.237 [31.42]	1.319 [33.50]	1.319 [33.50]	.950 [24.13]
50	1.490 [37.85]	1.569 [39.85]	1.200 [30.48]	1.100 [27.94]
60	1.740 [44.20]	1.820 [46.20]	1.820 [46.20]	1.450 [36.83]
68	1.937 [49.20]	2.024 [51.40]	2.015 [51.18]	1.650 [41.91]
80	2.237 [56.82]	2.323 [59.00]	2.319 [58.90]	1.950 [49.53]
100	2.740 [69.60]	2.820 [71.60]	2.620 [66.25]	2.450 [62.23]



RECOMMENDED PCB LAYOUT
 TOP VIEW

SPECIFICATIONS:

Material: PBT, glass reinforced, rated UL 94V-0
 Insulator color: Black
 Contacts: Phosphor Bronze

Plating: Tin over Copper underplate overall.

Electrical: Operating voltage: 250 VAC max.

Current rating: 0.5 Amp max.
 Contact resistance: 30 mohms max. initial
 Insulation resistance: 1,000 Mohms min.

Dielectric withstanding voltage: 300 VAC for 1 minute
 Temperature Rating: Operating temperature: -40°C to +85°C

Environmental: Lead free, RoHS compliant
 Recommended Soldering tem. 235°C for 5 sec.



ADAM TECH

909 Railway Avenue, Union, NJ 07083
 Phone: 908-687-5000 Fax: 908-687-5710

TITLE: TRANSITION PLUG, .050[1.27]
 FOR SINGLE LAYER .025[.635] FLAT CABLE

UNLESS OTHERWISE SPECIFIED ALL DIMENSIONS ARE IN INCHES [MM]		TOLERANCES: EXCEPT AS NOTED	
.X	± .10	ØXX	± .10
.XX	± .020	ØXXX	± .015
.XXX	± .015	ØXXXX	± .010
APPROVALS	DATE	DATE	DATE
DRAWN	DY	1/15/10	
CHECKED			
APPROVED			
SIZE	PART NO.	FDH-XX-T	REV.
REF:	SCALE: NTS	SHEET 1 OF 2	