

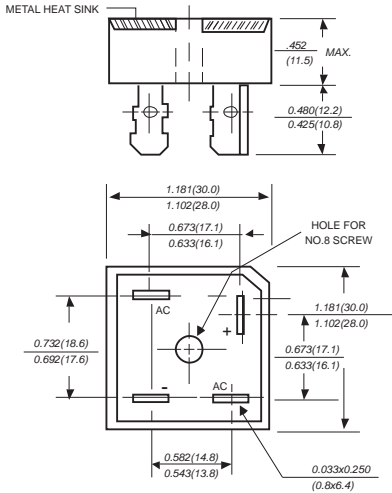


# BR1505 THRU BR1510

## SILICON BRIDGE RECTIFIERS

Reverse Voltage - 50 to 1000 Volts Forward Current - 15.0 Amperes

### BR-15



Dimensions in inches and (millimeters)

### FEATURES

- ◆ The plastic package carries Underwriters Laboratory Flammability Classification 94V-0
- ◆ Ideal for printed circuit boards
- ◆ Low reverse leakage
- ◆ High forward surge current capability
- ◆ High temperature soldering guaranteed: 260°C/10 seconds, at 5 lbs. (2.3kg) tension

### MECHANICAL DATA

**Case:** Molded plastic body

**Terminals:** Plated leads solderable per MIL-STD-750, Method 2026

**Polarity:** Polarity symbols marked on case

**Mounting:** Thru hole for #8 screw, 20in.-lbs. torque max.

**Weight:** 0.66 ounce, 18.7 grams

### MAXIMUM RATINGS AND ELECTRICAL CHARACTERISTICS

Ratings at 25°C ambient temperature unless otherwise specified.

Single phase half-wave 60Hz, resistive or inductive load, for capacitive load current derate by 20%.

	SYMBOLS	BR 1505	BR 151	BR 152	BR 154	BR 156	BR 158	BR 1510	UNITS
Maximum repetitive peak reverse voltage	$V_{RRM}$	50	100	200	400	600	800	1000	VOLTS
Maximum RMS voltage	$V_{RMS}$	35	70	140	280	420	560	700	VOLTS
Maximum DC blocking voltage	$V_{DC}$	50	100	200	400	600	800	1000	VOLTS
Maximum average forward output rectified current at $T_c=55^\circ\text{C}$ (Note 1,2)	$I_{(AV)}$	15							Amps
Peak forward surge current 8.3ms single half sine-wave superimposed on rated load (JEDEC Method)	$I_{FSM}$	300.0							Amps
Rating for Fusing ( $t < 8.3\text{ms}$ )	$I^2t$	373							$\text{A}^2\text{s}$
Maximum instantaneous forward voltage drop per bridge element at 7.5A	$V_F$	1.1							Volts
Maximum DC reverse current $T_A=25^\circ\text{C}$ at rated DC blocking voltage $T_A=100^\circ\text{C}$	$I_R$	10							$\mu\text{A}$
Isolation voltage from case to leads	$V_{ISO}$	2500							$V_{AC}$
Typical Thermal Resistance (Note 2)	$R_{\theta JA}$	2.0							$^\circ\text{C}/\text{W}$
Operating junction temperature range	$T_J$	-65 to +150							$^\circ\text{C}$
storage temperature range	$T_{STG}$	-65 to +150							$^\circ\text{C}$

#### NOTES:

1. Unit mounted on 5" x 4" x 3" thick (12.8cm x 10.2cm x 7.3cm) Al. plate.

2. Bolt down on heat-sink with silicone thermal compound between bridge and mounting surface for maximum heat transfer efficiency with #8 screw.

# RATINGS AND CHARACTERISTIC CURVES BR1505 THRU BR1510

