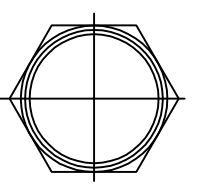
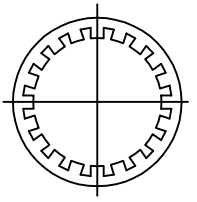
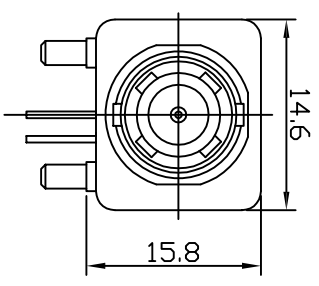
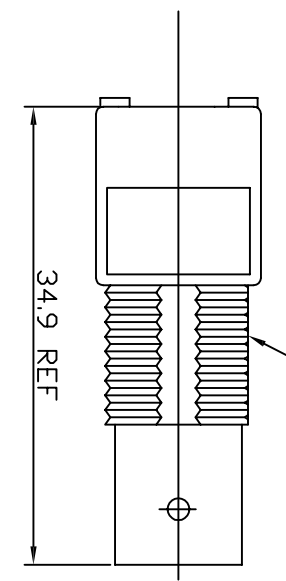
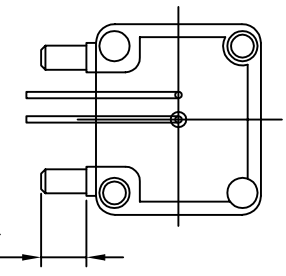
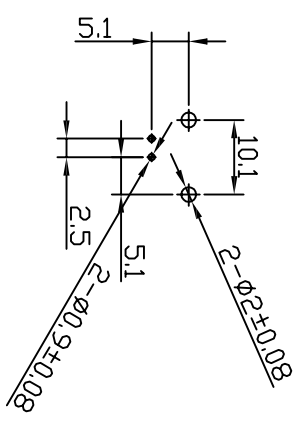
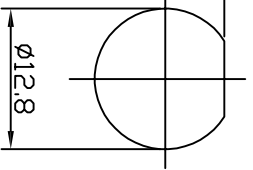


Rev	AWO #	Description	Date	Appr
-		RELEASED	12/27/05	

APPROVED: \_\_\_\_\_  
 DATE: \_\_\_\_\_ TITLE: \_\_\_\_\_



1/2-28UNEF-2B  
 CLAMP NUT



RECOMMENDED MOUNTING HOLE  
 MAXIMUM PANEL THICKNESS: 5.5MM  
 RECOMMENDED MOUNTING TORQUE:  
 12 INCH-POUNDS MAX

NO	DESCRIPTION	MATERIAL	FINISH	QTY
7	NUT	BRASS	NICKEL	
6	WASHER	IRON	NICKEL	1
5	PIN	COPPER	TIN	1
4	PIN	COPPER	TIN	1
3	INSULATOR	PDM	NONE	1
2	BODY	ZINC ALLOY	NICKEL	1
1	CENTER CONTACT	PHOSPHOR BRONZE	GOLD	1

SPECIFICATIONS:  
 Environmental:  
 Lead free, RoHS compliant.  
 Recommended soldering temp: 260° for 5 sec.



**ADAM TECH**

909 Rahway Avenue, Union, NJ 07083  
 Phone: 908-687-5000 Fax: 908-687-0214

TITLE: RF CONNECTOR, TYPE BNC, HI-TEMP  
 RIGHT ANGLE, PCB, 75 OHM,

UNLESS OTHERWISE SPECIFIED ALL DIMENSIONS ARE MM [INCHES] TOLERANCES: EXCEPT AS NOTED	
.X ± .10	ØX ± .10
.XX ± .020	ØXX ± .015
.XXX ± .015	ØXXX ± .010
APPROVALS	DATE
DRAWN	SLS
CHECKED	
APPROVED	

SIZE	PART NO.	REV.
X	RF1-01A-D-00-75-M-HT	
REF:	SCALE: NTS	SHEET 1 OF 1