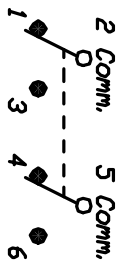


RECOMMEND P.C.B. HOLES



CIRCUIT: DPDT

CONTACT CONFIGURATION

SWITCH FUNCTION		
POS. 1	POS. 2	POS. 3
DN	NONE	DN
2-3,5-6	OPEN	2-1,5-4

NOTES

1. ALL DIMENSIONS IN MM
2. TERM. NOS. FOR REF ONLY
3. RATING: 3A @120VAC or 28VDC, 1A @250VAC.

A		RELEASED FOR PRODUCTION	DATE	CHKD	TOLERANCES		TITLE		SCALE	DATE	DR	DWG	REV
REV.		DESCRIPTION			0.0	±0.4	2:1	400 MDP-1 R1 VS2 Q E	2:1	9/24/97	NM	T421001	A
THE INFORMATION CONTAINED IN THIS DOCUMENT IS PROPRIETARY TO E-SWITCH AND IS NOT TO BE COPIED OR TRANSMITTED													

