

FM RADIO BAND TUNING APPLICATION.

FEATURES

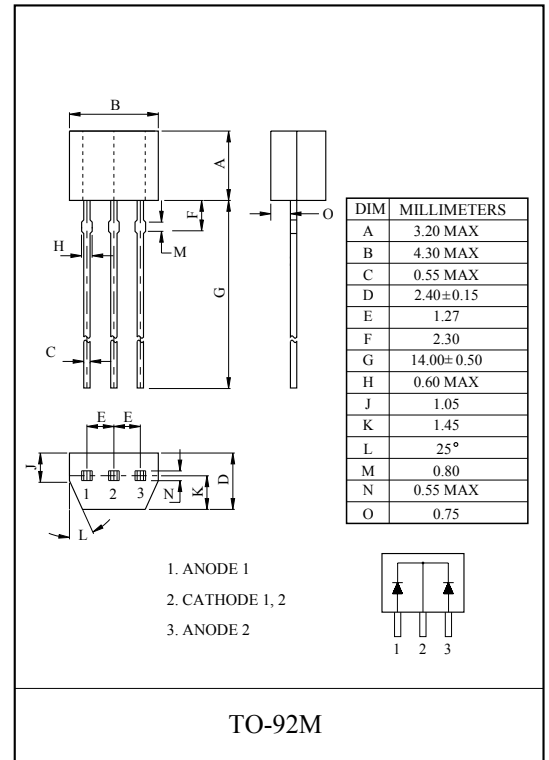
- Low r_S : $r_S=0.3\Omega$ (Typ.).
- Small Package.

MAXIMUM RATINGS (Ta=25°C)

CHARACTERISTIC	SYMBOL	RATING	UNIT
Reverse Voltage	V_R	15	V
Junction Temperature	T_j	150	°C
Storage Temperature Range	T_{stg}	-55 ~ 150	°C

CLASSIFICATION OF CAPACITANCE GRADE

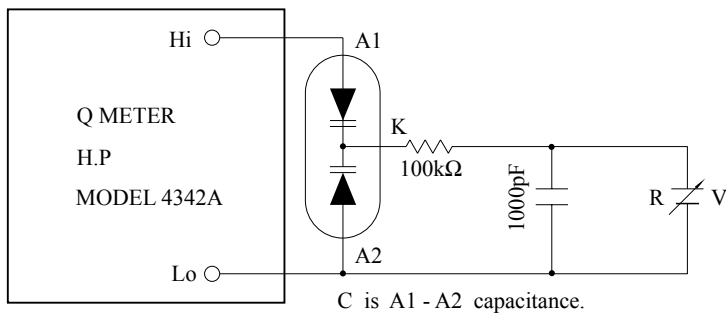
GRADE	CAPACITANCE (C_{2V})	UNIT
A	34.0 ~ 35.5	pF
B	35.0 ~ 36.5	
C	36.0 ~ 37.5	
D	37.0 ~ 38.5	
E	38.0 ~ 39.5	



ELECTRICAL CHARACTERISTICS (Ta=25°C)

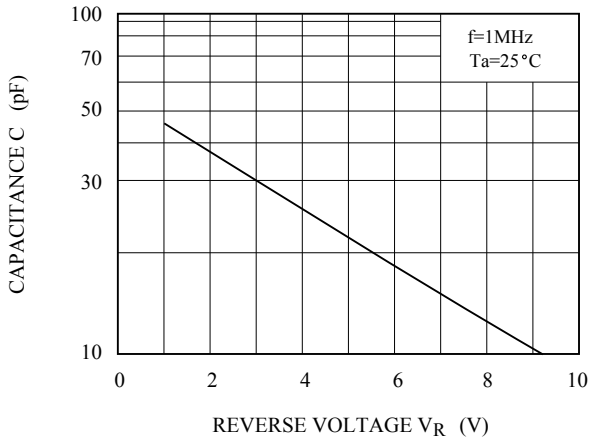
CHARACTERISTIC	SYMBOL	TEST CONDITION	MIN.	TYP.	MAX.	UNIT
Reverse Voltage	V_R	$I_R=10\mu A$	15	-	-	V
Reverse Current	I_R	$V_R=15V$	-	-	50	nA
Capacitance	C_{2V}	$V_R=2V, f=1MHz$	34.0	-	39.5	pF
	C_{8V}	$V_R=8V, f=1MHz$	11.7	-	13.7	
Capacitance Ratio	C_{2V}/C_{8V}		2.7	2.95	3.2	
Series Resistance	r_S	$C=30pF, f=50MHz$	-	0.3	0.5	Ω

Note : r_S test circuit

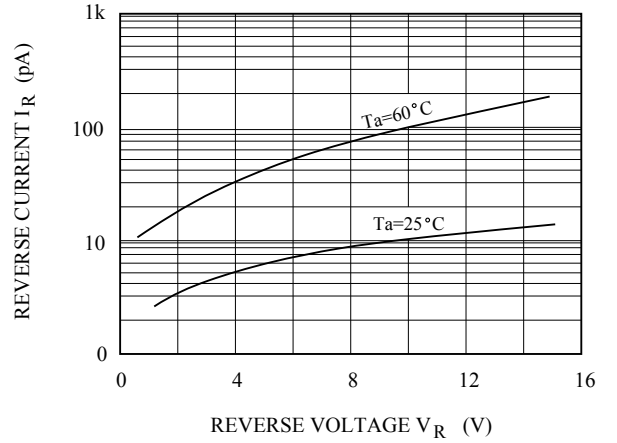


KDV147

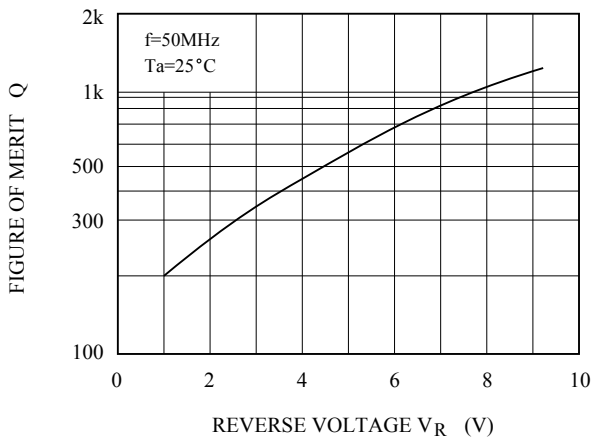
C - V_R



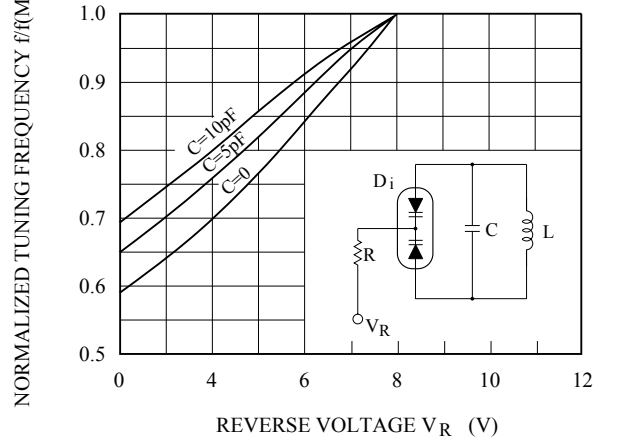
I_R - V_R



Q - V_R



f/f_{MAX} - V_R



C(Temp.)/C(25°C) - T_a

