



SMP Male Bulkhead Mount Push-On Connector Solder Attachment for RG405, PE-SR405FL, PE-SR405FLJ

RF Connectors Technical Data Sheet

PE45126

Configuration

- SMP Male Connector
- MIL-STD-348A
- 50 Ohms
- Straight Body Geometry
- RG405, PE-SR405FL, PE-SR405FLJ Interface Type
- Solder/Solder Attachment
- Bulkhead

Electrical Specifications

Description	Minimum	Typical	Maximum	Units
Frequency Range	DC		18	GHz
VSWR			1.3:1	
Operating Voltage (AC)			350	Vrms

Mechanical Specifications

Size	
Length	0.325 in [8.26 mm]
Width/Dia.	0.24 in [6.10 mm]
Height	0.374 in [9.5 mm]
Weight	0.006 lbs [2.72 g]

Material Specifications

Description	Material	Plating
Contact	Brass	Gold 30µ in. minimum
Insulation	Teflon	
Body	Brass	Gold 3µ in. minimum
Coupling Nut	Brass	Gold 3µ in. minimum

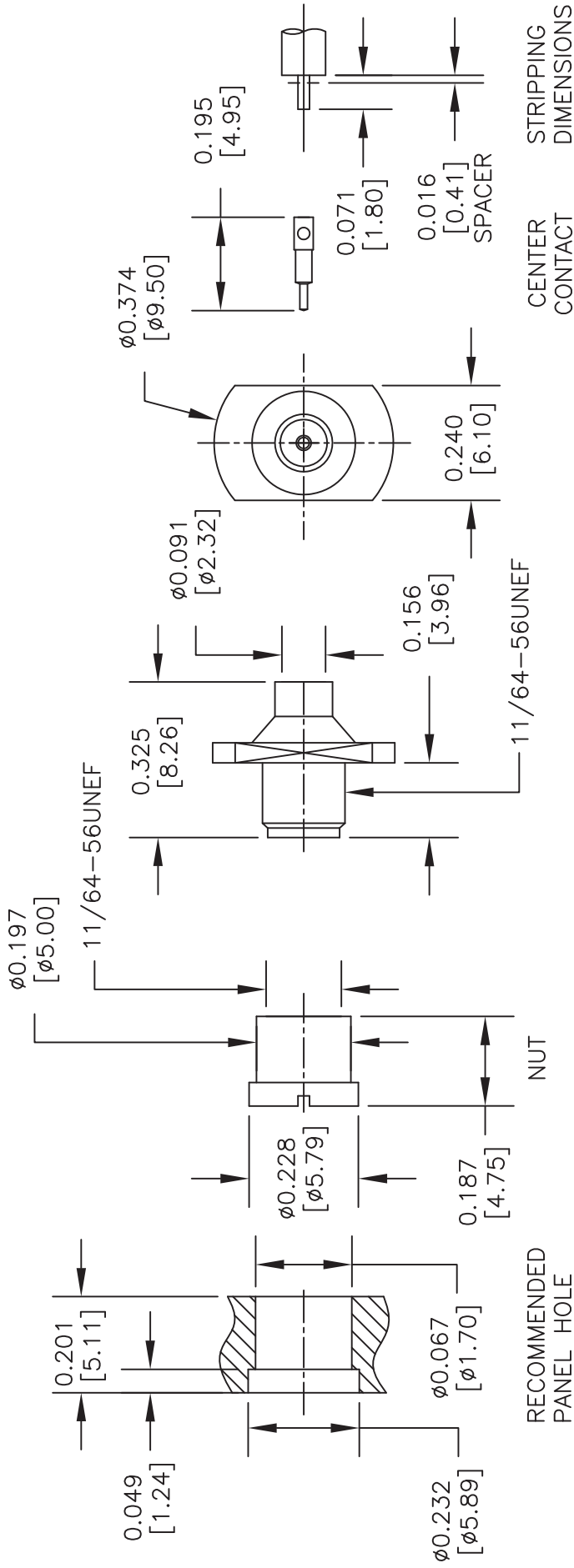
Environmental Specifications

Temperature Operating Range	-65 to 165 deg C
-----------------------------	------------------

Click the following link (or enter part number in "SEARCH" on website) to obtain additional part information including price, inventory and [SMP Male Bulkhead Mount Push-On Connector Solder Attachment for RG405, PE-SR405FL, PE-SR405FLJ PE45126](#)

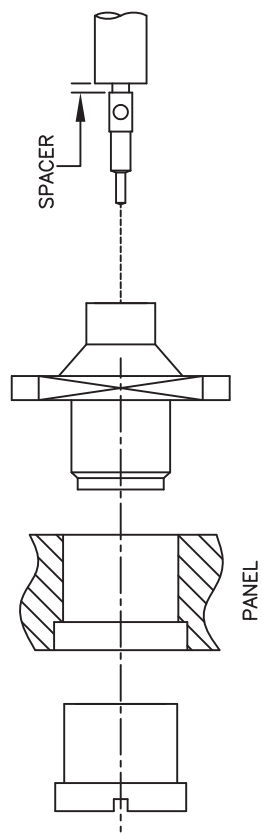


PE45126 CAD Drawing  
 SMP Male Bulkhead Mount Push-On Connector Solder  
 Attachment for RG405, PE-SR405FL, PE-SR405FLJ



ASSEMBLY PROCEDURES

1. STRIP THE CABLE TO THE DIMENSIONS SHOWN, DO NOT NICK CENTER CONDUCTOR.
2. INSERT THE CENTER CONDUCTOR INTO THE CONTACT USING THE SPACER. SOLDER THE CONNECTION. REMOVE THE SPACER AND ANY EXCESS SOLDER.
3. INSERT CONTACT INTO THE BODY UNTIL IT SEATS.
4. SOLDER OUTER CONDUCTOR TO THE BODY.



DWG TITLE

PE45126

NOTES:  
 1. UNLESS OTHERWISE SPECIFIED ALL DIMENSIONS ARE NOMINAL.  
 2. ALL SPECIFICATIONS ARE SUBJECT TO CHANGE WITHOUT NOTICE AT ANY TIME.  
 3. DIMENSIONS ARE IN INCHES [mm].

PE PASTERNAK®

THE ENGINEER'S RF SOURCE

Pasternack Enterprises, Inc.  
 P.O. Box 16759 | Irvine | CA | 92623  
 Phone: (949) 261-1920 | Fax: (949) 261-7451  
 Website: www.pasternack.com | E-Mail: sales@pasternack.com

FSCM NO. 53919

CAD FILE 021215

SCALE N/A

SIZE A

200