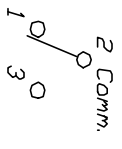


RECOMMENDED P.C.B. LAYOUT

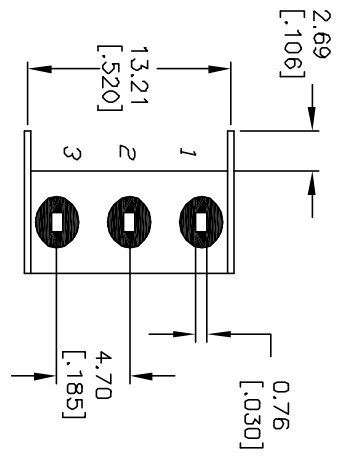
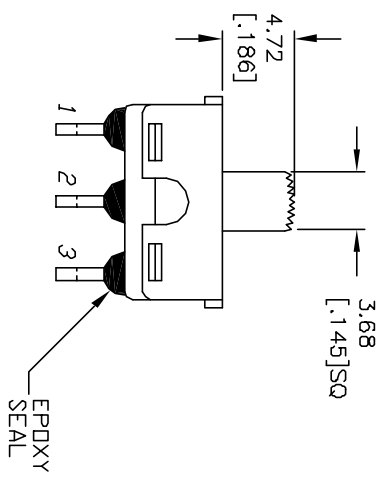
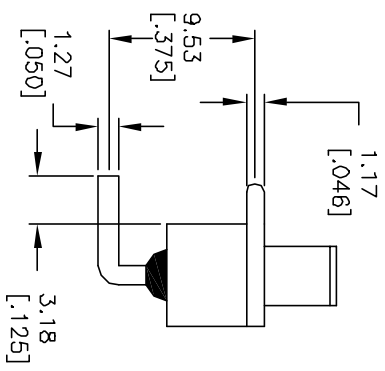
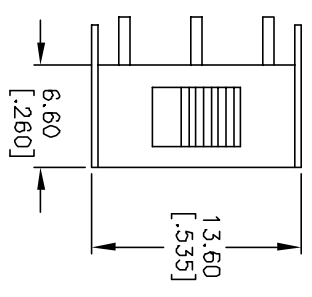


CONTACT CONFIGURATION



NOTES:

1. ALL DIMENSIONS IN MM [INCH]
2. GENERAL TOLERANCE: X.X=±0.4
X.XX=±0.25
3. TERM. NOS. FOR REFERENCE ONLY.
4. CONTACT MATERIAL: GOLD PLATE OVER COPPER ALLOY
5. CONTACT RESISTANCE: 10mΩ TYP.
6. ELECTRICAL LIFE: 30,000 ACTUATIONS AT FULL LOAD
7. INSULATION RESISTANCE: 1,000 MΩ min.
8. DIELECTRIC STRENGTH: 1,000 V RMS @ SEA LEVEL
9. OPERATING TEMPERATURE: -30°C TO 85°C



NOTE:
CONTACTS CROPPED
FOR CLARITY

| | | | | |
|------|---------|---------------------|---------|------|
| REV. | ECN No. | DESCRIPTION | DATE | CHKD |
| B | 11946 | REVISED AND REDRAWN | 1/25/02 | CJC |

| | | | | | |
|-----------------------|-------|---------|-----|---------|-----|
| TITLE | SCALE | DATE | DR | DWG | REV |
| 500 SSP 1 S1 M6 R E A | 2:1 | 1/25/02 | CJC | T511001 | B |



THE INFORMATION CONTAINED IN THIS DOCUMENT IS PROPRIETARY TO E-SWITCH AND IS NOT TO BE COPIED OR TRANSFERRED