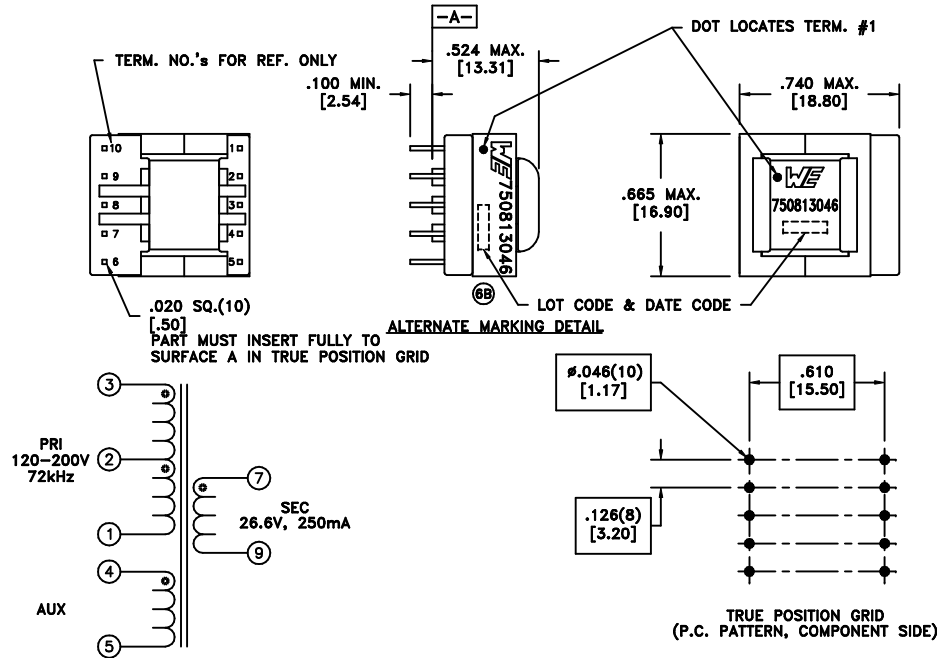


CUSTOMER TERMINAL	RoHS	LEAD(Pb)-FREE
Sn96%, Ag4%	Yes	Yes

more than you expect



**ELECTRICAL SPECIFICATIONS @ 25°C unless otherwise noted:**

PARAMETER	TEST CONDITIONS	VALUE
D.C. RESISTANCE	1-3 @20°C	2.10 ohms ±10%
D.C. RESISTANCE	4-5 @20°C	0.82 ohms ±10%
D.C. RESISTANCE	7-9 @20°C	0.35 ohms ±10%
INDUCTANCE	1-3 10kHz, 100mVAC, Ls	1.44mH ±10%
SATURATION CURRENT	20% rolloff from initial	600mA
LEAKAGE INDUCTANCE	tie(4+5, 7+9), 100kHz, 100mVAC, Ls	14.0uH typ., 25.0uH max.
DIELECTRIC	tie(1+4), 4500VAC, 1 second	4500VAC, 1 minute
DIELECTRIC	3-4 1250VAC, 1 second	1000VAC, 1 minute
URNS RATIO	(3-1):(7-9)	3.941:1, ±1%
URNS RATIO	(3-1):(4-5)	8.375:1, ±1%
URNS RATIO	(3-2):(2-1)	1:1, ±1%

**GENERAL SPECIFICATIONS:**

Designed to comply with the following requirements as defined by IEC60950-1, EN60950-1, UL60950-1/CSA60950-1 and AS/NZS80950.1:  
- Reinforced insulation for a primary circuit at a working voltage of 400VDC.

Wire insulation & RoHS status not affected by wire color.  
Wire insulation color may vary depending on availability.

REV.	DATE	Packaging Specifications Method: Tray PKG-0887 www.we-online.com/midcom		Tolerances unless otherwise specified: Angles: ±1° Decimals: ±.005 [.13] Fractions: ±1/64 Footprint: ±.001 [.03]	DRAWING TITLE TRANSFORMER	PART NO. 750813046
6B	11/12		CONVENTION PLACEMENT	This drawing is dual dimensioned. Dimensions in brackets are in millimeters.	eiSos p/n: 750813046	SPECIFICATION SHEET 1 OF 1
6A	9/11	SEE REVISION SHEET FOR	REVISION LEVEL			

