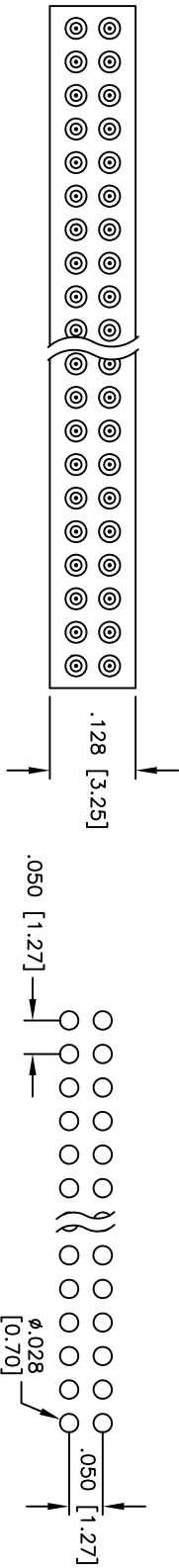
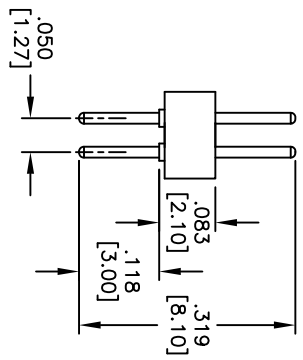
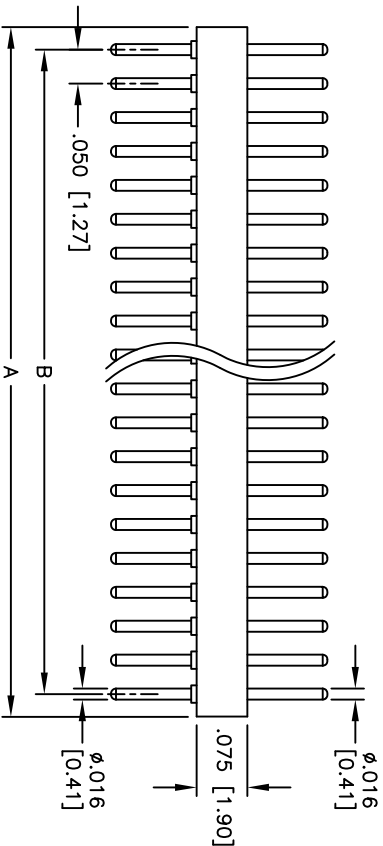


Rev	AWO #	Description	Date	Appr
-		RELEASED	5/24/10	

APPROVED: _____
 DATE: _____ TITLE: _____



RECOMMENDED PCB LAYOUT
(TOP SIDE)



SPECIFICATIONS:
 Material: PPS, glass reinforced, rated UL 94V-0
 Insulator color: Black
 Sleeve: Brass
 Plating: Tin over Copper underplate overall.
 Electrical:
 Current rating: 1 Amp max
 Contact resistance: 10 mohms max
 Dielectric Strength: Min 1000 VRMS
 Temperature Rating:
 Operating temperature: -40°C to +105°C
 Environmental:
 Lead free, RoHS compliant
 Recommended soldering temp: 235°C for 5 seconds

Positions: 2 thru 50
 A = .050 [1.27] x No. of Positions per Row + 0.16 [0.41]
 B = .050 [1.27] x No. of Spaces

UNLESS OTHERWISE SPECIFIED
 ALL DIMENSIONS ARE INCHES [MM]
 TOLERANCES: EXCEPT AS NOTED

INCHES	HOLES
.X ± .10	ØX ± .10
.XX ± .020	ØXX ± .015
.XXX ± .015	ØXXX ± .010

APPROVALS

DATE	DATE

DRAWN: DY 5/24/10
 CHECKED: _____
 APPROVED: _____

ADAM TECH
 909 Railway Avenue, Union, NJ 07083
 Phone: 908-687-5000 Fax: 908-687-5710

TITLE: SCREW MACHINE TERMINAL STRIP, DUAL ROW STRAIGHT, .050" SPACING, TIN PLATED



SIZE	PART NO.	REV.
X	HMCT-2-XX-1-T	-

REF: S00019C SCALE: NTS SHEET 1 OF 1

6 5 4 3 2 1

A B C D