

SMT Current Sensor – T6522-AL



This low cost transformer is designed for use at 50 kHz to 300 kHz to sense continuous currents up to 3 Amps. The current windings can be connected in series to provide twice the output sensitivity. It offers 500 Vrms interwinding isolation.

The small footprint, low profile, surface mount ceramic case makes it ideal for high-density boards and provides an excellent surface for pick and place operations.

Applications include power supply feedback control, motor protection, overload sensing and detecting load drop or shutdown.

To request free evaluation samples, contact Coilcraft or visit www.coilcraft.com.

Part number ¹	Turns (N) ² pri : sec	Inductance ³ min (mH)	DCR max (Ohms)		Frequency range (kHz)	Sensed current max I_{in}	Volt-time product ⁴ (V- μ sec)	R_T for 1 V_{out} from 1 A I_{in} ⁵
			1,2 – 5,6	3 – 4				
T6522-AL_	1 : 50	3.4	0.006	0.70	50 – 300	3 A	30	50 Ohms

1. When ordering, please specify **packaging** code:

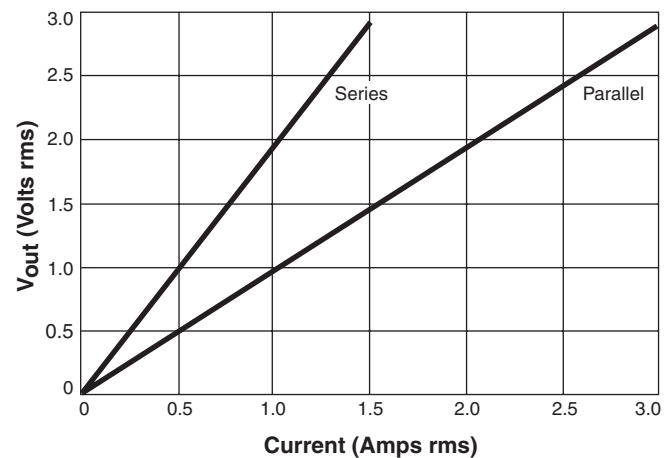
T6522-ALD

Packaging: **D** = 13" machine ready reel. EIA-481 embossed plastic tape (750 per full reel).

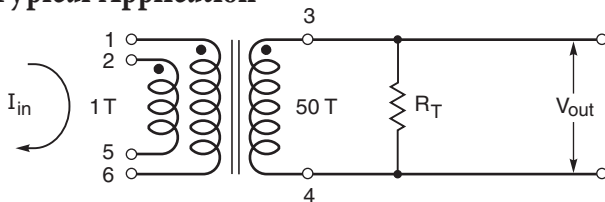
B = Less than full reel. In tape, but not machine ready. To have a leader and trailer added (\$25 charge), use code letter D instead.

- The two primary windings may be connected in parallel (1:50) to provide up to 3 A (I_{in}) sensing capability (3 V_{out}), or connected in series (2:50) to provide twice the sensitivity (1 A I_{in} yields 2 V_{out}).
- Inductance is for the secondary, measured at 100 kHz, 0.1 Vrms.
- Maximum volt-time product for the secondary.
- Varying terminating resistance increases or decreases output Voltage/ Ampere according to the following equation:
 $R_T = V_{out} \times N_{sec} / I_{in}$.
- Electrical specifications at 25°C.

Typical Response (with $R_T = 50$ Ohm)



Typical Application



www.coilcraft.com

US +1-847-639-6400 sales@coilcraft.com
UK +44-1236-730595 sales@coilcraft-europe.com
Taiwan +886-2-2264 3646 sales@coilcraft.com.tw
China +86-21-6218 8074 sales@coilcraft.com.cn
Singapore + 65-6484 8412 sales@coilcraft.com.sg

Document 369-1 Revised 03/20/07

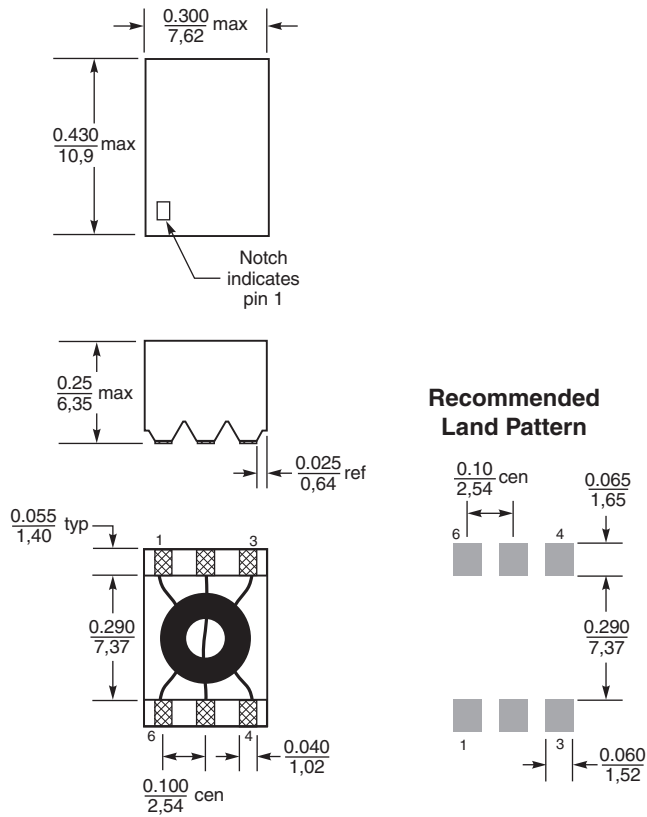
© Coilcraft Inc. 2013

This product may not be used in medical or high risk applications without prior Coilcraft approval. Specification subject to change without notice. Please check web site for latest information.



SMT Current Sensor – T6522-AL

Dimensions



Weight: 0.9 g

Termination Tin-silver-copper over silver-palladium-platinum

Ambient temperature -40°C to $+85^{\circ}\text{C}$

Storage temperature Component: -40°C to $+185^{\circ}\text{C}$.

Tape and reel packaging: -40°C to $+80^{\circ}\text{C}$

Packaging 750/13" reel Plastic tape: 24 mm wide, 0.37 mm thick, 12 mm pocket spacing, 6.5 mm pocket depth.



www.coilcraft.com

US +1-847-639-6400 sales@coilcraft.com
UK +44-1236-730595 sales@coilcraft-europe.com
Taiwan +886-2-2264 3646 sales@coilcraft.com.tw
China +86-21-6218 8074 sales@coilcraft.com.cn
Singapore + 65-6484 8412 sales@coilcraft.com.sg

Document 369-2 Revised 03/20/07
 Document 369-2 Revised 03/20/07

© Coilcraft Inc. 2013
 This product may not be used in medical or high risk applications without prior Coilcraft approval. Specification subject to change without notice. Please check web site for latest information.