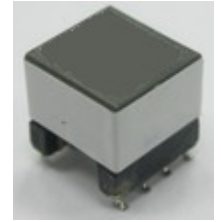
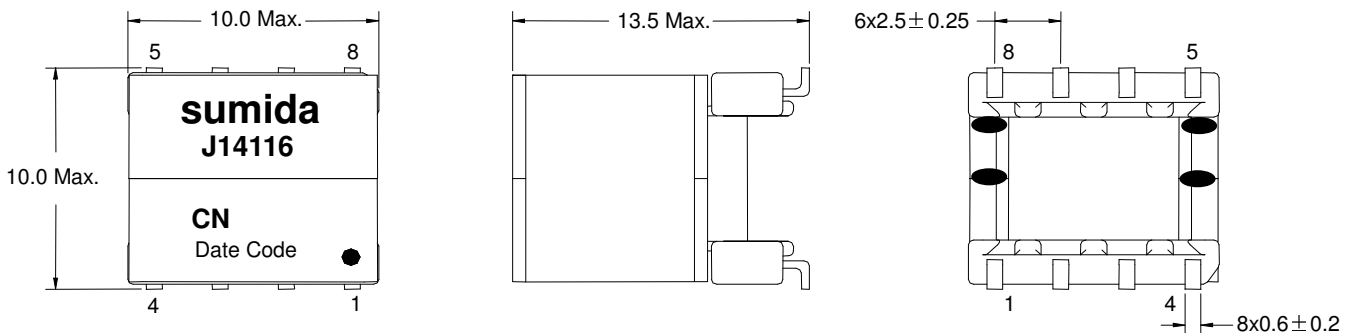


**Type: CEP913**
**◆ Product Description**

- 10.0×10.0mm Max.(L×W),13.5mm Max. Height.
- Custom design is available.


**◆ Feature**

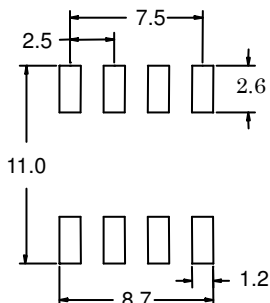
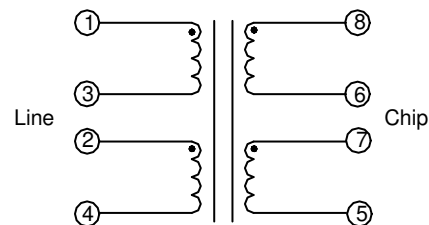
- Max. operating frequency :30MHz.
- Storage temperature range:-40°C~+85°C.
- Operating temperature range: -40°C~+85°C(including coil's self temperature rise).
- Product weight:3.41 g(Ref.).
- Ideally used in ADSL2+ & VDSL2+ CEP Modems.
- RoHS Compliance.

**◆ Dimensions (mm)**


\* “●” Adhesive

\* “●” White point indicates pin#1.

\* Terminals should be measured excluding the length of the soldered point.

**◆ Land Pattern (mm)**

**◆ Schematics(Bottom)**


**Type: CEP913**
**◆ Specification (Part No. : J14116)**

Characteristics	Limits	Measuring conditions
Inductance(Ls) (1-4)	470 $\mu$ H $\pm$ 10%	10kHz,0.1V,(2+3)Shorted
Turns ratio(T/R) (1-4):(8-5)	1.333:1 ( $\pm$ 1%)	100kHz,0.1V[(2+3),(6+7)]Shorted
Total harmonic distortion(THD)	-80dB Max.	30kHz,2.0Vrms
Leakage inductance(LL) (1-4)	1.0 $\mu$ H Max.	1MHz,0.1V,[(2+3),(5+6+7+8)]Shorted
Longitudinal balance(LB) (1-4)	40dB Typ.	138kHz $\sim$ 12MHz,(2+3)Shorted,(6+7)Grounded
D.C.R. (1-4)	1.3 $\Omega$ Max.	(2+3)Shorted
D.C.R. (8-5)	1.0 $\Omega$ Max.	(6+7)Shorted
Inter winding capacitance(Cww) (1-8)	130pF Max.	100kHz,0.1V,[(2+3),(6+7)]Shorted
Hi-Pot (1-8)	1875Vrms	1Sec. 0.5mA [(2+3),(6+7)]Shorted