

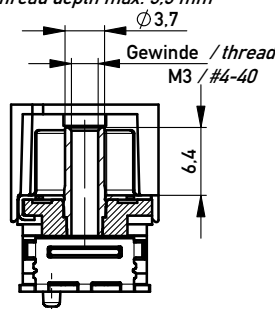
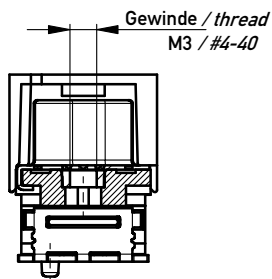
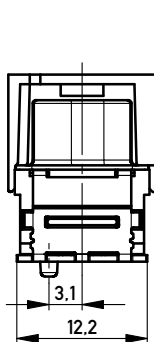
ohne / without

Mutter / nut

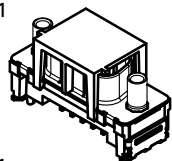
thread depth max. 7.5 mm
max. Einschraubtiefe 7.5 mm

Bolzen / bolt

max. Einschraubtiefe 5.5 mm
thread depth max. 5.5 mm



M 1:1

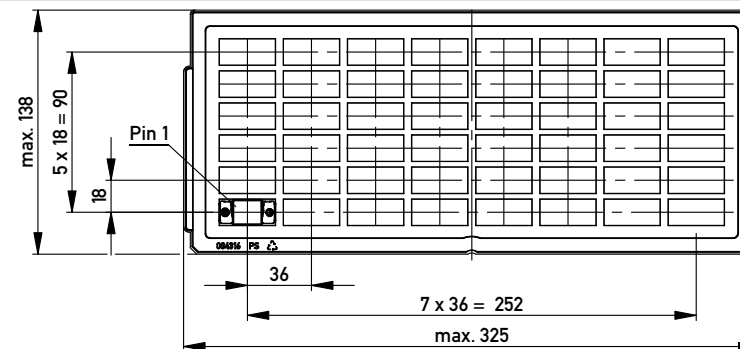


Anschlussbereich verzinkt
terminal area tin plating

Koplanarität der Anschlüsse ≤ 0.1 mm
coplanarity area of termination ≤ 0.1 mm

Anforderungsstufe: 2
class: 2

194295	194290	X			
194296	194291			#4-40	
194297	194292			M3	
194298	194293		#4-40		
194299	194294		M3		
Ident-Nr. part-no. tape & reel	Ident-Nr. part-no. tray	ohne without	Mutter thread	Bolzen bolt	Bemerkung remark

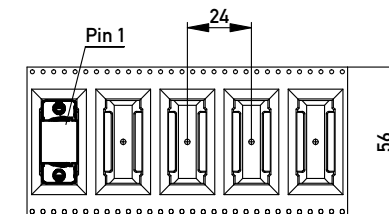
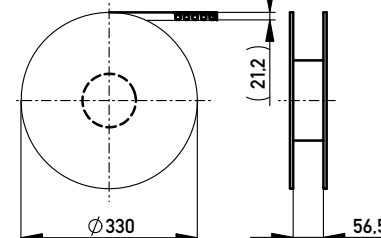


Verpackt in Tray
Verpackungseinheit 48 St.
tray packaging
packaging unit 48 pcs

Sonstige Angaben siehe Zeichnung 204628 / Additional indications according to drawing 204628

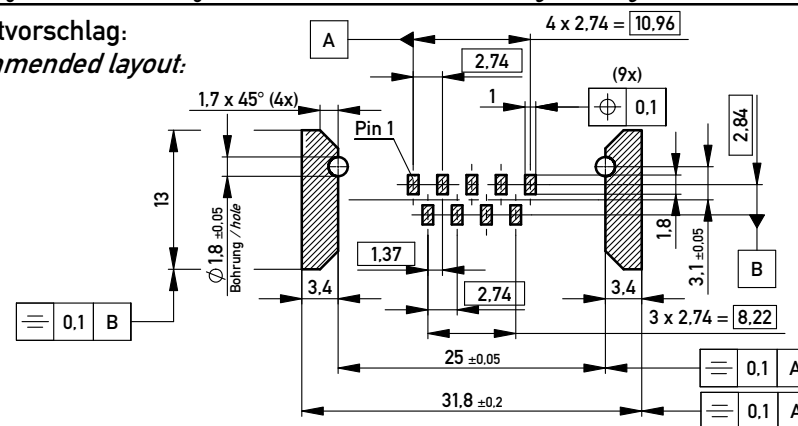
Verpackt in Gurtverpackung - Tape on Reel Packaging
Verpackungseinheit: 75 Stück - Packaging unit: 75 pcs

Abspulrichtung - Reel off Direction



Sonstige Angaben siehe Zeichnung 204654 / Additional indications according to drawing 204654

Layoutvorschlag:
recommended layout:



Fehlende Masse und Angaben siehe DIN 41652 / Missing information and dimensions according to DIN 41652

Sonstige Angaben siehe Fertigungsunterlagen / Additional indications according to the production documentation

Information:	Tolerances	Scale 2:1
All rights reserved. Only for Information. To ensure that this is the latest version of this drawing, please contact one of the ERNI companies before using.	Subject to modification without prior notice. Drawing will not be updated.	Designation
		TMC-P 09-SMD-9,0-BA8 <i>TMC-P 09-SMD-9,0-type 8</i>
www.ERNI.com	144907	1
Class	TMCP	A3

Copyright by ERNI GmbH
Proprietary notice pursuant to ISO 16106 to be observed.

e 26.09.2011
Index Date