

Surface mount zener diode

UDZ2V0B-UDZ56B

FEATURES

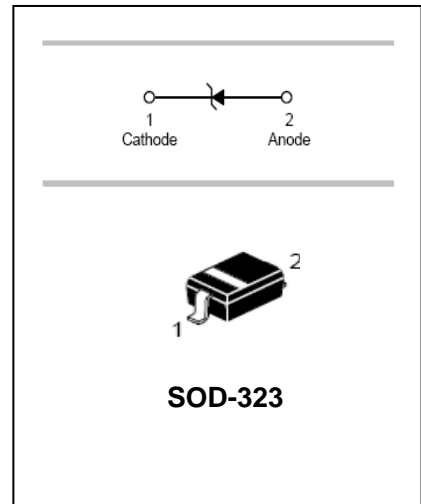
- Very sharp breakdown characteristics.
- Very tight tolerance on zener breakdown voltage.
- Ideally suited for automated assembly processes.



Lead-free

APPLICATIONS

- Zener diode.
- Ultra-small surface mount package.



ORDERING INFORMATION

Type No.	Marking	Package Code
UDZ2V0B-UDZ56B	See table 2	SOD-323

MAXIMUM RATING @ Ta=25°C unless otherwise specified

Characteristic	Symbol	Value	Unit
Power Dissipation	P_d	200	mW
Thermal resistance, junction to ambient air	$R_{\theta JA}$	625	°C/W
Junction temperature	T_j	150	°C
Storage temperature range	T_{stg}	-65-150	°C

ELECTRICAL CHARACTERISTICS @ Ta=25°C unless otherwise specified

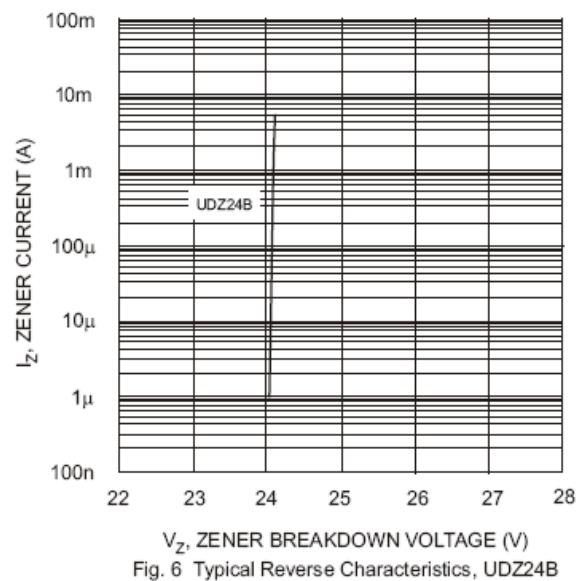
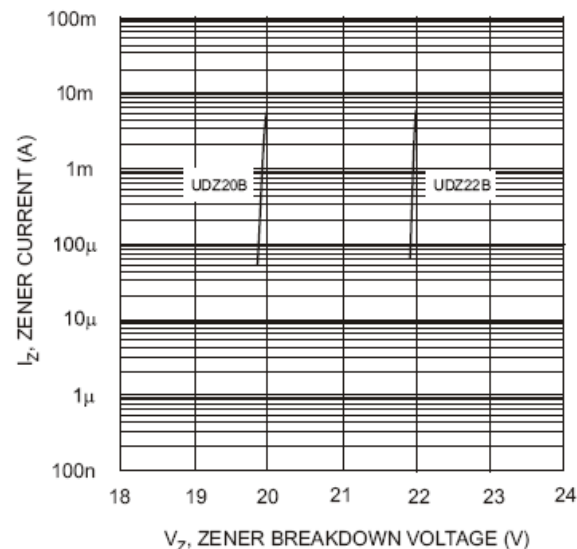
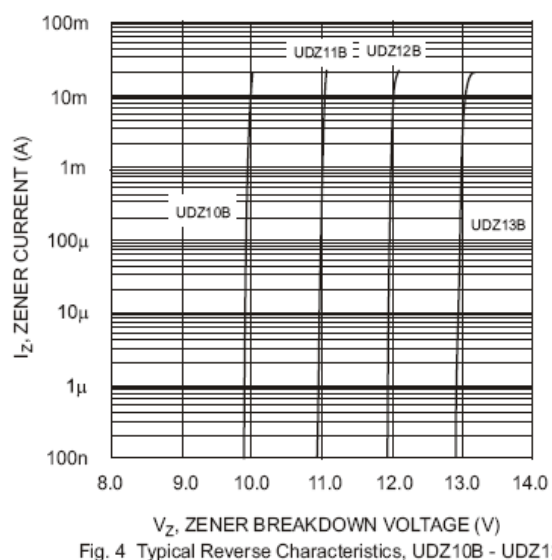
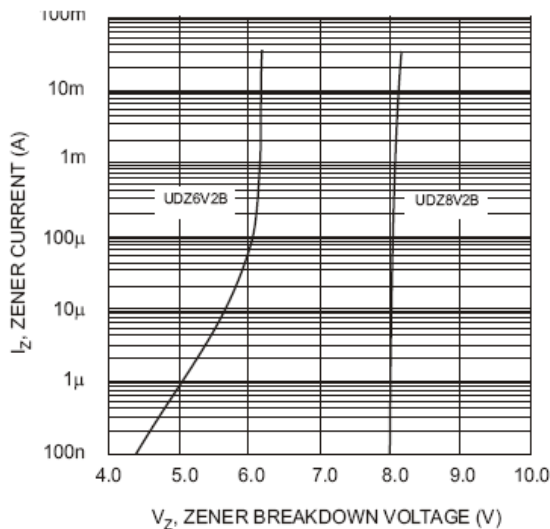
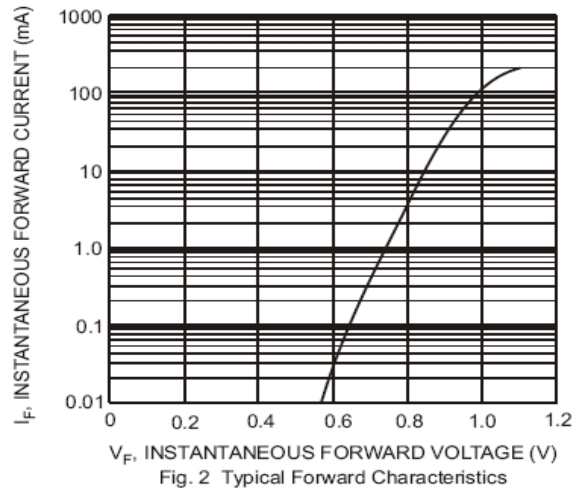
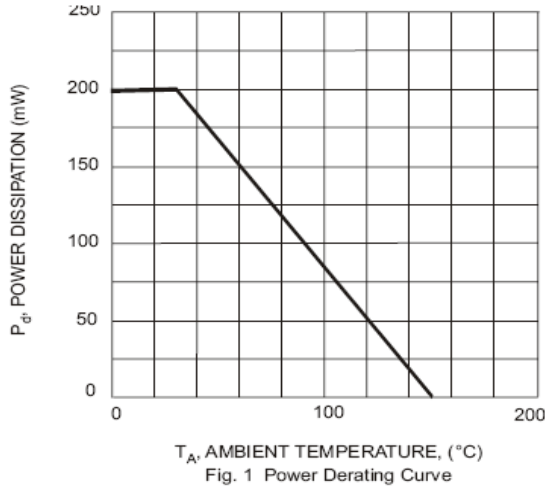
Diode Semiconductor Korea

Surface mount zener diode

UDZ2V0B-UDZ56B

Type Number	Marking Code	Zener Voltage Range				Maximum Zener Impedance			Maximum Reverse Current	
		V _Z @I _{ZT}			I _{ZT}	Z _{ZT} @I _{ZT}	Z _{ZK} @I _{ZK}	I _{ZK}	I _R	@V _R
		Nom(V)	Min(V)	Max(V)	mA	Ω		mA	μA	V
UDZ2V0B	B1	2.0	2.020	2.200	5	100	1000	0.5	120	0.5
UDZ2V2B	B2	2.2	2.220	2.410	5	100	1000	0.5	120	0.7
UDZ2V4B	B3	2.4	2.430	2.630	5	100	1000	0.5	120	1.0
UDZ2V7B	B4	2.7	2.690	2.910	5	110	1000	0.5	100	1.0
UDZ3V0B	B5	3.0	3.010	3.220	5	120	1000	0.5	50	1.0
UDZ3V3B	B6	3.3	3.320	3.530	5	120	1000	0.5	20	1.0
UDZ3V6B	B7	3.6	3.600	3.845	5	100	1000	1.0	10	1.0
UDZ3V9B	B8	3.9	3.890	4.160	5	100	1000	1.0	5	1.0
UDZ4V3B	B9	4.3	4.170	4.430	5	100	1000	1.0	5	1.0
UDZ4V7B	BA	4.7	4.550	4.750	5	100	800	0.5	2	1.0
UDZ5V1B	BB	5.1	4.980	5.200	5	80	500	0.5	2	1.5
UDZ5V6B	BC	5.6	5.490	5.730	5	60	200	0.5	1	2.5
UDZ6V2B	BD	6.2	6.060	6.330	5	60	100	0.5	1	3.0
UDZ6V8B	BE	6.8	6.650	6.930	5	40	60	0.5	0.5	3.5
UDZ7V5B	BF	7.5	7.280	7.600	5	30	60	0.5	0.5	4.0
UDZ8V2B	BG	8.2	8.020	8.360	5	30	60	0.5	0.5	5.0
UDZ9V1B	BH	9.1	8.850	8.230	5	30	60	0.5	0.5	6.0
UDZ10B	BI	10	9.770	10.21	5	30	60	0.5	0.1	7.0
UDZ11B	BJ	11	10.760	11.220	5	30	60	0.5	0.1	8.0
UDZ12B	BK	12	11.740	12.240	5	30	80	0.5	0.1	9.0
UDZ13B	BL	13	12.910	13.490	5	37	80	0.5	0.1	10.0
UDZ15B	BM	15	14.340	14.980	5	42	80	0.5	0.1	11.0
UDZ16B	BN	16	15.850	16.510	5	50	80	0.5	0.1	12.0
UDZ18B	BO	18	17.560	18.350	5	65	80	0.5	0.1	13.0
UDZ20B	BP	20	19.520	20.390	5	85	100	0.5	0.1	15.0
UDZ22B	BQ	22	21.540	22.470	5	100	100	0.5	0.1	17.0
UDZ24B	BR	24	23.720	24.780	5	120	120	0.5	0.1	19.0
UDZ27B	BS	27	26.190	27.530	5	150	150	0.5	0.1	21.0
UDZ30B	BT	30	29.190	30.690	5	200	200	0.5	0.1	23.0
UDZ33B	BU	33	32.150	33.790	5	250	250	0.5	0.1	25.0
UDZ36B	BV	36	35.070	36.870	5	300	300	0.5	0.1	27.0
UDZ39B	BW	39	38.025	39.975	5	300	350	0.5	0.1	29.0
UDZ43B	BX	43	41.925	44.075	2	300	400	0.5	0.1	32.0
UDZ47B	BY	47	45.825	48.175	2	300	450	0.5	0.1	35.0
UDZ51B	BZ	51	49.725	52.275	2	350	500	0.5	0.1	38.0
UDZ56B	U1	56	54.600	57.400	2	350	500	0.5	0.1	42.0

TYPICAL CHARACTERISTICS @ Ta=25°C unless otherwise specified



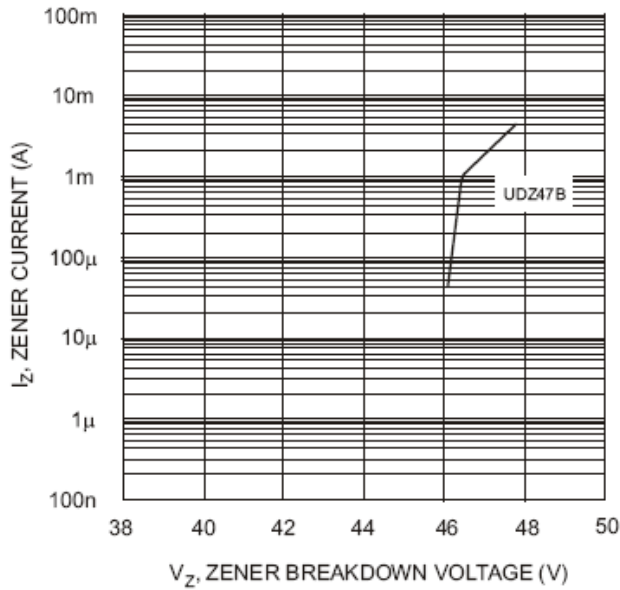


Fig. 7 Typical Reverse Characteristics, UDZ47B

PACKAGE OUTLINE

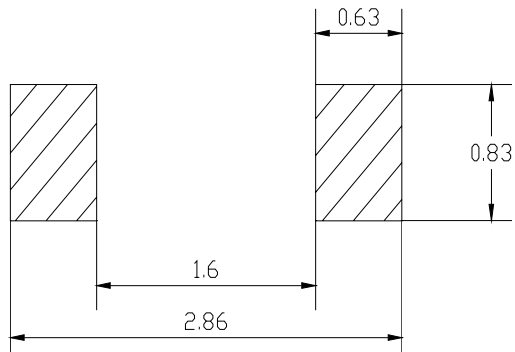
Plastic surface mounted package

SOD-323

The drawing shows three views of the SOD-323 package: a top view with dimensions K (total width) and B (body width), a side view with dimension C (height), and a bottom view with dimensions J (lead thickness), E (lead length), and H (lead height).

SOD-323		
Dim	Min	Max
A	1.275	1.325
B	1.675	1.725
C	0.9 Typical	
D	0.25	0.35
E	0.27	0.37
H	0.02	0.1
J	0.1 Typical	
K	2.6	2.7
All Dimensions in mm		

SOLDERING FOOTPRINT



Unit : mm

PACKAGE INFORMATION

Device	Package	Shipping
UDZ2V0B-UDZ56B	SOD-323	3000/Tape&Reel