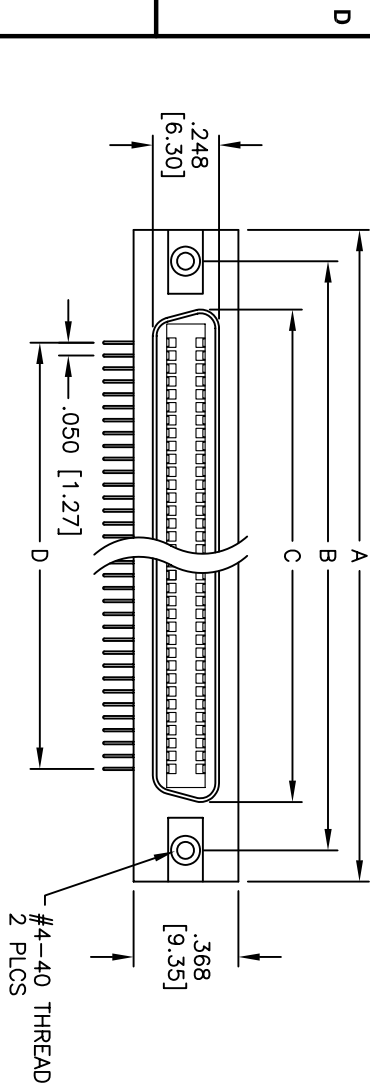
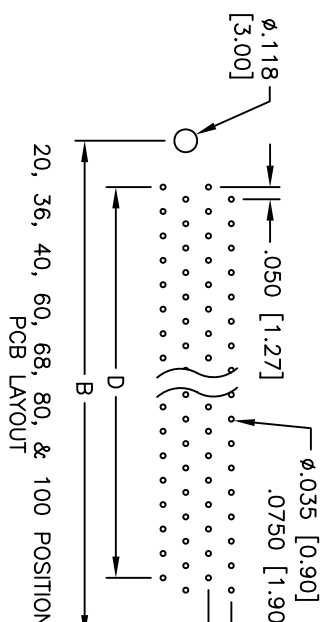
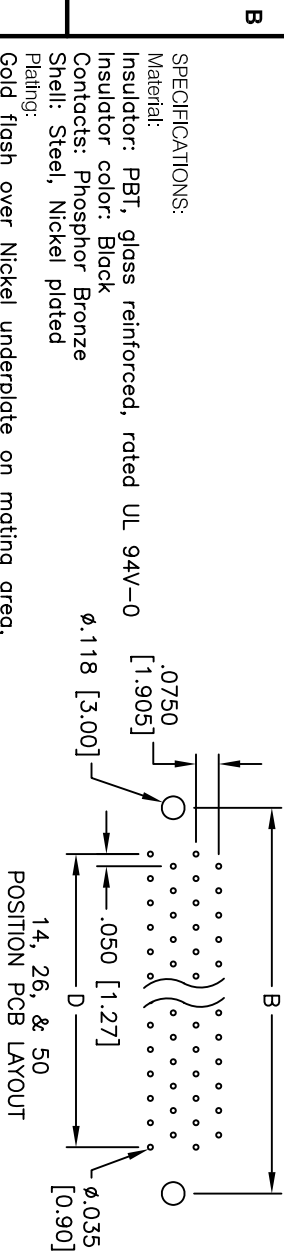
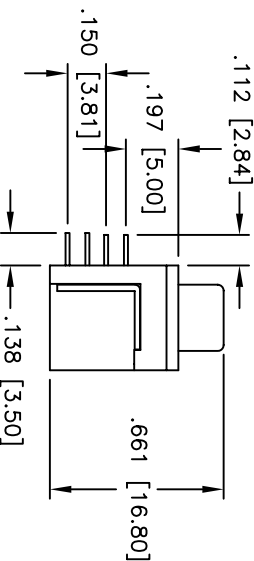
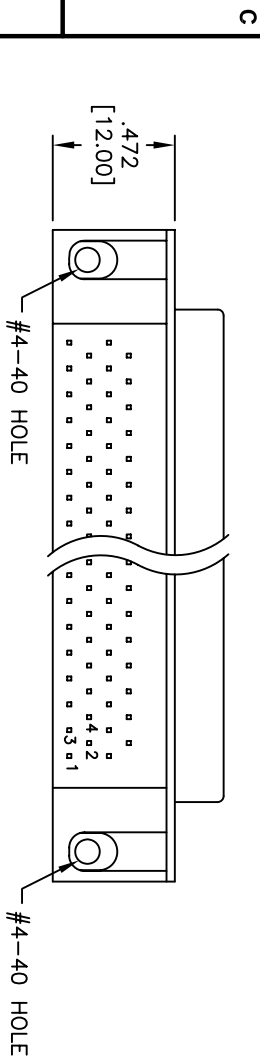


| Rev | AWO # | Description | Date | Appr |
|-----|-------|-------------|---------|------|
| - | | RELEASED | 5/20/05 | |

APPROVED: _____
 DATE: _____ TITLE: _____



| Positions | A | B | C | D |
|-----------|---------------|---------------|---------------|---------------|
| 14 | 1.173 [29.79] | .931 [23.64] | .506 [12.84] | .300 [7.62] |
| 20 | 1.323 [33.60] | 1.081 [27.45] | .656 [16.65] | .450 [11.43] |
| 26 | 1.473 [37.41] | 1.231 [31.26] | .806 [20.46] | .600 [15.24] |
| 36 | 1.723 [43.76] | 1.480 [37.61] | 1.056 [26.81] | .650 [16.51] |
| 40 | 1.823 [46.30] | 1.581 [40.15] | 1.156 [29.35] | .950 [24.13] |
| 50 | 2.073 [52.65] | 1.831 [46.50] | 1.456 [36.96] | 1.200 [30.48] |
| 60 | 2.323 [59.00] | 2.081 [52.85] | 1.656 [42.05] | 1.450 [36.83] |
| 68 | 2.551 [64.80] | 2.281 [57.93] | 1.856 [47.13] | 1.650 [41.93] |
| 80 | 2.823 [71.70] | 2.581 [65.55] | 2.156 [54.75] | 1.950 [49.53] |
| 100 | 3.323 [84.40] | 3.081 [78.25] | 2.656 [67.45] | 2.450 [62.23] |



14, 26, & 50 POSITION PCB LAYOUT
 20, 36, 40, 60, 68, 80, & 100 POSITION PCB LAYOUT

SPECIFICATIONS:

- Material: Insulator: PBT, glass reinforced, rated UL 94V-0
- Insulator color: Black
- Contacts: Phosphor Bronze
- Shell: Steel, Nickel plated
- Plating: Gold flush over Nickel underplate on mating area, Tin over Copper underplate on tails
- Electrical: Operating voltage: 250 VAC max
- Current rating: 1 Amp max
- Contact resistance: 30 mohms max
- Insulation resistance: 1,000 Mohms min
- Dielectric withstanding voltage: 1,000 VAC for 1 minute
- Temperature Rating: Operating temperature: -55°C to +105°C
- Environmental: Lead free, RoHS compliant
- Recommended soldering temp: 235°C for 5 seconds

ADAM TECH

909 Rahway Avenue, Union, NJ 07083
 Phone: 908-687-5000 Fax: 908-687-5710

TITLE: RIBBON CONNECTOR SOCKET, R/A
 NO LATCH BLOCKS, #4-40 MOUNTING HOLES

| | | | | | |
|---|--------|---------|------------|---------------------------------------|--|
| UNLESS OTHERWISE SPECIFIED ALL DIMENSIONS ARE INCHES [MM] TOLERANCES: EXCEPT AS NOTED | | INCHES | | Holes | |
| .X | ± .10 | ØX | ± .10 | | |
| .XX | ± .020 | ØXXX | ± .015 | | |
| .XXX | ± .015 | ØXXXX | ± .010 | | |
| APPROVALS | | DATE | | TITLE | |
| DRAWN | SS | 5/20/05 | | NO LATCH BLOCKS, #4-40 MOUNTING HOLES | |
| CHECKED | | SIZE | PART NO. | S2B-SR-XX-2-TFA-1 | |
| APPROVED | | REV. | SCALE: NTS | SHEET 1 OF 1 | |

