



# CSS0211P Series SMD WIRE WOUND POWER INDUCTORS (SHIELDED)

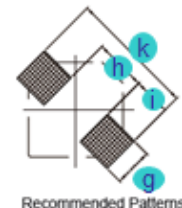
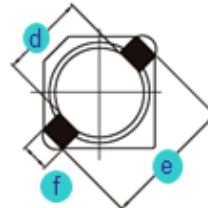
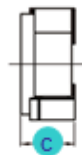
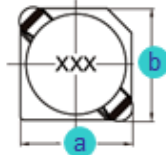
Rev. A

## A. Electrical Specifications:

P/N	Marking	Inductance (μH)	Test Freq. (KHz)	DCR Max. (mΩ)	Rated Current (mA)	I sat (mA)
CSS0211P-1R5N	1R5	1.5	100	68	1480	900
CSS0211P-2R2N	2R2	2.2	100	98	1270	780
CSS0211P-3R3N	3R3	3.3	100	123	1020	600
CSS0211P-4R7N	4R7	4.7	100	170	880	500
CSS0211P-6R8N	6R8	6.8	100	260	800	440
CSS0211P-100N	100	10.0	100	400	650	350

## B. Dimensions: mm (Inch)

Series	a	b	c	d	e	f	g	h	i	k
CSS0211P	3.2 (0.126)	3.2 (0.126)	1.2 (0.047)	Ø2.1 (0.083)	3.3 (0.130)	1.0 (0.039)	1.3 (0.051)	1.7 (0.067)	1.3 (0.051)	4.3 (0.169)
Tol.	Max.	Max.	Max.	±0.1 (0.004)	Typ.	Typ.	Typ.	Typ.	Typ.	Typ.



## C. General Information:

1. CSS0211P-xxx\_, "CSS0211P" = P/N, "xxx" = Inductance, "\_" = Tolerance.
2. Tolerance "\_": N: ± 30%, M: ± 20%, L: ± 15%.
3. Operating temperature range: -30°C to +100°C (Including self-generated heat).
4. Storage temperature: -40°C to +85°C.
5. Inductance measured using the HP4284A and Chroma1320 & 3302.
6. DCR measured using Chroma 16502 milliohm meter.
7. Inductance drop no more than 35% of initial value at Isat, temperature rise Δt < 40°C at rated current.
8. Inductance and Current range: From 1.5 μH (1480 mA) to 10.0 μH (650mA).
9. MSL: Level 1.

## D. Applications:

1. Game Consoles
2. Set Top Boxes
3. Cables Modems
4. Computers
5. Mobile Communication Devices (Cell Phones, Radios, etc.)
6. PDA, LCD, DVD, BRP, HD.

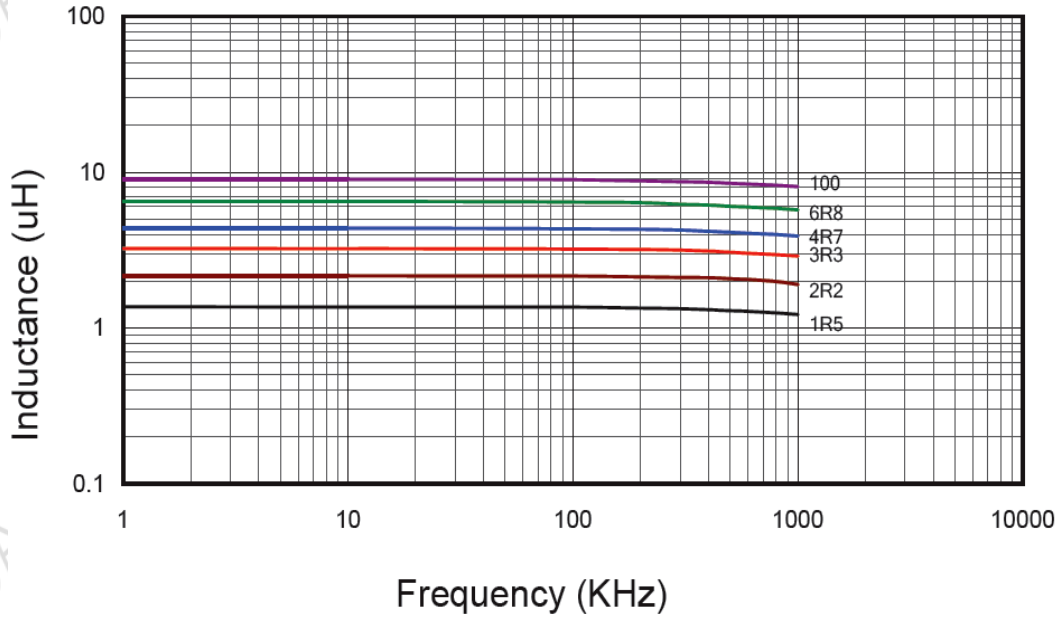


# CSS0211P Series SMD WIRE WOUND POWER INDUCTORS (SHIELDED)

Rev. A

## E. Characteristics Curve:

### Inductance vs. Frequency



### Inductance vs. DC Current

